



**WHERE
THEORY
MEETS
CREATIVITY**

ANTHROPOLOGY 62
ART 64
ARTS ADMINISTRATION & CULTURAL POLICY 66
COMMUNITY STUDIES 68
COMPUTING 70
CREATIVE & CULTURAL ENTREPRENEURSHIP 84
CULTURAL STUDIES 72
CURATING 74
DESIGN 76
EDUCATION 78
ENGLISH & COMPARATIVE LITERATURE 80
HISTORY 82
JOURNALISM 86
MANAGEMENT 88
MEDIA & COMMUNICATIONS 90
MUSIC 92
POLITICS & INTERNATIONAL RELATIONS 94
PSYCHOLOGY 96
SOCIAL WORK 98
SOCIOLOGY 100
THEATRE & PERFORMANCE 102
THERAPEUTIC STUDIES 104
VISUAL CULTURES 106

02 Where tradition meets invention

- 04 A distinct kind of energy
- 06 Goldsmiths by numbers
- 08 A serious academic force
- 14 A collaborative and critical community
- 16 Goldsmiths people
- 20 Our academic departments
- 21 Types of postgraduate course
- 22 How to apply
- 23 Studying a research degree

26 Where London meets the world

- 28 London-based
- 30 Single-site campus in a dynamic area
- 34 Accommodation
- 38 Facilities
- 42 Students' Union
- 44 Support
- 46 Goldsmiths and the world
- 48 Your future
- 50 Visit us

60 Where dialogue meets debate

- 62 Our programmes

108 Specialist programmes for international students

- 109 Pre-sessional English language programmes
- 110 Pre-Masters Pathways

114 What you need to know

- 114 Entry requirements
- 116 Visas and immigration
- 117 Fees
- 118 Funding and financial support
- 122 Index of programmes

Why Goldsmiths?

Our highly regarded courses in the arts, humanities, social sciences and computing are taught by renowned academics. You get to mix with pioneering minds and with ambitious students on one central campus. We encourage you to look at your subject creatively and critically. You'll graduate informed, inspired, and with the skills and ideas you need for an exciting future.



**WHERE
TRADITION
MEETS
INVENTION**

Study for an internationally recognised University of London degree, in an institution where academic heritage goes hand in hand with new ways of thinking about and applying your subject.



Where tradition meets invention

A DISTINCT KIND OF ENERGY



When you graduate from the University of London you join a community that has educated four monarchs, 52 presidents/prime ministers, 74 Nobel laureates, six Grammy winners, two Oscar winners and three Olympic gold medalists

Introducing Goldsmiths

Goldsmiths has a distinct kind of energy. It's one that stimulates. And it's one that stirs. We're a close-knit campus community with a global reach, and we bring your learning to life through personal contact with the best and the brightest academics in their fields.

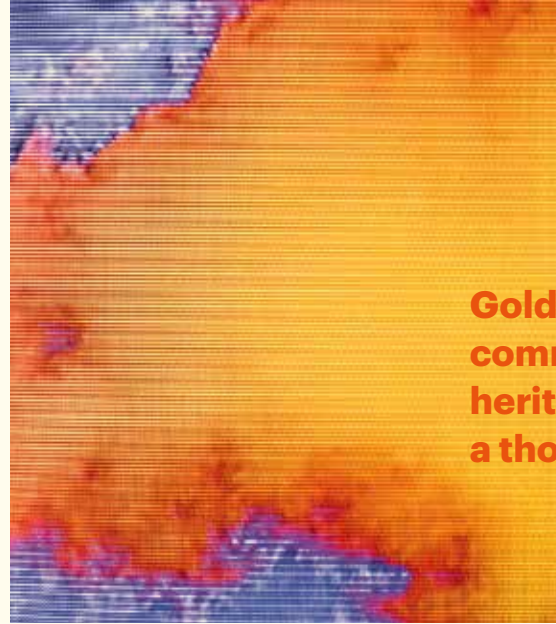
Academic heritage and creativity

Founded in 1891, and part of the University of London since 1904, we're known for our rich academic history and our inventive approach. We combine creative insight with academic rigour, and have been voted by students as one of the best creative universities*, and by our peers as one of the UK's top 25 institutions for the quality of our research**. We're also ranked in the world's elite for 10 subject areas.***

Pioneering ethos

We champion degrees that provoke thought, stretch the imagination and tap into tomorrow's world. We also ask the questions that really matter in subjects as diverse as the arts and humanities, media and communications, social sciences, cultural studies, computing, and entrepreneurial business and management. Find out more about our postgraduate degrees on pages 62-107.

*Which? University 2016 **Research Excellence Framework 2014 (based on the Times Higher Education research intensity subject rankings) ***QS World University Rankings by Subject 2016



Goldsmiths: a close-knit community, a rich academic heritage, a creative powerhouse, a thought-provoking place.



GOLDSMITHS BY NUMBERS

Number 1 in London for students having good relationships with staff¹



in London for students having good relationships with staff¹

101 seats in our new on-site cinema, showing films on weekday evenings and all day at weekends



29 Sports available through the Goldsmiths Students' Union, ranging from cricket to Tai Chi



available through the Goldsmiths Students' Union, ranging from cricket to Tai Chi

TOP 25 IN THE UK FOR THE QUALITY OF OUR RESEARCH



7 winners of the Turner Prize. Nearly a quarter of previously shortlisted artists are either Goldsmiths alumni or staff



More than 600 pieces of art in the Goldsmiths collection, including a Picasso



7,000 approx. square metres of the College Green



7 MINUTES by train into central London



98 events during Welcome Week in 2015, including barbeques and tours of the local area



1,700 1-2-1 advice sessions with students each year with our Careers Service



1 We are the most eco-friendly university in London⁴



EST 1891 Goldsmiths was founded in 1891, and we've been part of the University of London since 1904



1 Best Department of Design in the UK³



Students from 140 countries



More than 250,000 books available for students to borrow in the Goldsmiths library



38 classes every week at our on-campus gym, Club Pulse

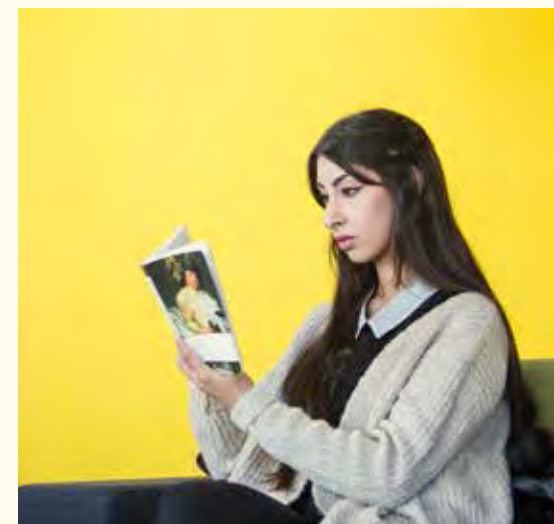
69 STUDENT SOCIETIES including the Creative Writing Society and Photography Society



¹ Times Higher Education Student Experience Survey 2015. ² Global Employability University Ranking 2015.

³ The Guardian University Guide, 2017. ⁴ University of Indonesia Green Metric rating (greenmetric.ui.ac.id)

Would London make sense without smell? How can we safeguard our rights in the digital world? How do our brains deal with big datasets?



A SERIOUS ACADEMIC FORCE

Our pioneering academics are asking these questions (and many more besides) right now. They carry out world-leading research that has a wide-reaching impact on public life, on issues like social justice, conflict resolution, and how to creatively apply new technologies. Here's just a sample of the ground-breaking research, practice and commentary happening at Goldsmiths.



Find out more
Listen to podcasts from our academics at www.gold.ac.uk/podcasts and read about their research and latest news at www.gold.ac.uk/news

Smells matter

Dr Alex Rhys-Taylor,
Department of Sociology

Historically, the sense of smell has played a crucial part in shaping the social and economic life of London. In a place so known for its visual and aural culture, how important is our ability to smell the city? Dr Alex Rhys-Taylor from the Department of Sociology is investigating London's aromas, and what they can tell us about class, history and geography.

“Smells matter. They can shape how we move through cities, who we sit next to, who we don't. They mark out different parts of the city from each other, and they conjure vivid memories. To lose a sense of smell is to lose one of the key ways in which we anchor ourselves in culture and social relations. We regularly critique and historicise the visual architecture of the city. Rarely, however, do we think seriously about the olfactory atmospheres of the city. If we did, maybe we could tell better stories about who we are today.”

Bibliotherapy

Professor Blake Morrison,
Department of English
& Comparative Literature

When Blake Morrison, Goldsmiths' Professor of Creative and Life Writing, started to research how reading can help to alleviate pain and mental distress, he uncovered a long history of literature as a powerful form of therapy. His findings led him to advocate that therapeutic reading in the UK, which is sometimes prescribed by GPs, works best using serious and imaginative literature rather than the self-help books and 'misery memoirs' often recommended. His proposals appeared in a Guardian article in which he also referenced The Reader Organisation, a small charity whose mission reflected his own suggestions. Blake's article, which was also reproduced in other media around the world, inspired hundreds of people from a multitude of countries to get into bibliotherapy. Many of them contacted The Reader Organisation who, thanks to the interest that Morrison's essay sparked, have since metamorphosed into an international charity working with thousands of people each year.

Training virtually

Dr Sylvia Xueni Pan,
Department of Computing

An international team of researchers led by Dr Sylvia Xueni Pan has been using virtual reality headset Oculus Rift to help understand how GPs respond to medical dilemmas.

A scenario places GPs into a virtual consulting room where they encounter a patient and her adult daughter. The patient exhibits virus-like symptoms, but her daughter is insistent that antibiotics have worked for her mother in the past. It is well known that antibiotics are over-prescribed and that this contributes to the rise of antibiotic-resistant infections. Should the GP prescribe antibiotics to minimise stress and increase the patient's likely satisfaction? Or refuse the prescription, even if this might jeopardise the long-term relationship with the patient and cause potential side effects?

The researchers explain: "The results suggest that virtual reality scenarios could be of significant use in the training of GPs. The idea that professionals can experience dilemmas in virtual reality before ever confronting them in reality is much like how pilots first train on simulators. It could lead to a profound change in professional education and training."

How do our brains deal with big datasets?

Professor Jonathan Freeman,
Department of Psychology

Professor Jonathan Freeman is taking part in an EU-funded research project that investigates how our brains deal with big datasets. The research will improve our engagement with big data in an increasingly information-rich world, and could help students study more efficiently, or journalists check sources at a quicker rate.

"We are seeing that it's physically impossible for people to analyse all the data in front of them, simply because of the time it takes. Any system that can speed it up and make it more efficient is of huge value."

Safeguarding online rights

Professor Marianne Franklin,
Department of Media & Communications

In an era of unprecedented access to new channels of personalised communication and often ambiguous corporate and government interests, how do we safeguard our rights and help shape the internet's future for the benefit of all? Marianne Franklin, a Professor of Global Media and Politics in the Department of Media and Communications, is asking just this question. Her research unpicks the agendas of a range of competing groups and their divergent visions for the future of the internet, and she has played a decisive role in advocating for online rights, having been an active participant (and former co-chair) of the Internet Rights and Principles Dynamic Coalition at the UN Internet Governance Forum, a formative force that has led to the agreement of a charter of human rights and principles for the internet.

Digital storytelling

Jim Anderson and Dr Vicky Macleroy,
Department of Educational Studies

Jim Anderson and Dr Vicky Macleroy have been leading a Paul Hamblyn Foundation-funded digital storytelling project that highlights the power of giving young people creative space. Young language-learners in schools in the UK and beyond collaborated to create digital stories about subjects that were important to them. The idea was that in creating their films and presentations the young people would work on narratives that were more nuanced or complex than they'd be able to communicate through words and grammar alone. The approach produced increased student motivation, confidence and learner autonomy, and has informed language teaching across the UK.



Sum of parts

Institute for Creative and Cultural Entrepreneurship

Sadler's Wells is the UK's leading dance house, and when it works with the public through its creative learning department it makes a huge impact: enriching lives, building confidence, and inspiring communities. But how do you capture this effect and learn from the experience? And how do you prove its worth to funders and the government? When the organisation wanted a comprehensive overview of an ambitious project called Sum of Parts, researchers from Goldsmiths' Institute for Creative and Cultural Entrepreneurship helped document its impact, encouraging everyone involved to reflect on their development in a way that's rarely achieved for a production on this scale. The findings have shaped the way the organisation will evaluate and articulate the benefits and outcomes of their work in the future.

Synthesised voices

Department of Design

A team of researchers from the Department of Design have created the Energy Babble, an automated talk-radio that draws on social media feeds to create a playful reflection of the state of debates on energy and the environment. The system gathers content from a variety of sources, including Twitter feeds from 'energy communities', government departments, and the National Grid, and chats about it continually using a number of synthesised voices interspersed with a variety of jingles and sound effects. It's both a product and a research tool, as it can highlight issues, understandings, practices and difficulties in the communities it monitors.

Built environments and human rights violations

Professor Eyal Weizman,
Centre for Research Architecture

Professor Eyal Weizman uses architecture as a starting point for discussions about political and human rights. Working in the West Bank with the Israeli human rights group B'Tselem, he has analysed drawings, plans and geographic data gathered during site visits and flyovers to demonstrate the relationship between the built environment and human rights violations in the Occupied Territories. His research is referred to by virtually all studies on planning and human rights in the region, and his data spurred the creation of a plethora of maps custom-made by advocacy groups, NGOs and human rights organisations, which have become a key tool in advocacy for Palestinians' rights.

Technology that adapts to feelings

Professor Atau Tanaka,
Department of Computing

Computer scientist Professor Atau Tanaka is leading a project that has been awarded more than £1.6m to accelerate the development of advanced gaming and music technology that adapts to human body language, expression and feelings.

"Humans are highly expressive beings. We communicate verbally but the body is also a major outlet for both conscious and unconscious expression. Technological advances have their greatest impact when they enable us to express ourselves, so it logically follows that new, disruptive innovations need interfaces that take advantage of our expressivity, rather than acting to restrict it."

Urban sensing

Dr Jennifer Gabrys,
Department of Sociology

As part of the Citizen Sense project that she leads, Dr Jennifer Gabrys from the Department of Sociology is investigating the relationship between technologies and practices of environmental sensing and citizen engagement. Most recently it's taken her to the US, where she's been working with communities who are using low-cost sensing equipment to monitor the environmental impact of fracking. Low-cost sensing equipment disguised as mailboxes were installed near fracking sites to monitor the environmental impact. These 'Frackboxes' typify the project's affordable yet complex technology to empower communities.

The next stage of the project will be investigating 'urban sensing', focusing on urban sustainability or 'smart city' projects that implement sensor technologies to realise more efficient or environmentally sound urban processes. The project is funded by the European Research Council.



Critiquing Home Office immigration campaigns

Dr Yasmin Gunaratnam,
Dr Emma Jackson and Dr Will Davies,
Department of Sociology and Department of Politics & International Relations

Dr Yasmin Gunaratnam, Dr Emma Jackson (Department of Sociology) and Dr Will Davies (Department of Politics) are among a team from seven universities looking at the wider effects of controversial Home Office immigration campaigns, such as high-profile enforcement raids. Their research suggests that the more the government tries to demonstrate that it is tough on immigration, the more the public takes this as an indication that immigration itself must be out of control and a threat in the first place. The researchers found that fear and anxiety have increased among those who are subject to immigration enforcement measures, but also among some ethnic minority British citizens who feel under threat from increased suspicion.

Dr Gunaratnam said: "It's important to recognise that the Home Office initiatives have also encouraged new forms of activism and support for migrants. As Pragnal Patel, Director of Southall Black Sisters, told us at our briefing for policy makers, our research has helped those who are trying to support vulnerable migrants and communities."



The postgraduate community at Goldsmiths is rich, vibrant and collaborative. You'll have the chance to work with academic staff as colleagues. They're not locked away in isolation - they're actively shaping our degrees, they're enthusiastic about teaching, and they're keen to find out what you think and why.

At Goldsmiths we believe the world needs people who challenge the status quo. It's how we change society, spark debate, and make great leaps in everything from technology to teaching. So we want you to think critically and challenge us. To come up with your own ideas, and back them up with evidence.

Something else you'll benefit from is our free talks and events programme. Covering everything from writing in the age of digital publishing to questioning whether you ever really know how you feel, you'll never be far from stimulating subjects or eye-opening inspiration. There are events taking place nearly every day on campus, and most are completely free of charge. Here's just a snapshot of some of the talks, recitals and discussions that take place over the course of a few days at Goldsmiths:

- Making the Invisible Visible: Smart-Card Data Analysis
- Ethnographic Fragments of the 'European Refugee Crisis'
- Wide Sargasso Sea: A 50th Anniversary Celebration
- Contemporary Music Double Bill
- Feminist Work on Work: Panel Discussion
- Football, Popular Music and Narcissism
- Good vs Evil: What are the Ethics of Digital Entrepreneurship?
- Disability, Technology and Eugenics
- The Future of Academic Publishing

A COLLABORATIVE AND CRITICAL COMMUNITY



GOLDSMITHS PEOPLE

From inspiring lecturers and tutors to enterprising fellow students, everyone you encounter at Goldsmiths will shape you as a person. We really are a community defined by our people.

From the moment you join Goldsmiths you'll become part of a powerful legacy of leading lights. And you'll join our prestigious alumni community when you graduate, with access to our global Goldsmiths Connect network, www.gold.ac.uk/alumni/connect



GoldAlumni



*Goldsmiths
Alumni*



“It’s difficult to put one’s finger on it but there is something in the air at Goldsmiths. The learning experience is second to none; it creates a sense of being in the right place for the right reasons and leaves me feeling very stimulated, inspired and motivated.”

Jeff, PGCE (Secondary):
Design & Technology

“The good thing about Goldsmiths is that, if you run into someone else from there and tell them that you are also from Goldsmiths, it feels like you’ve just run into an old friend.”

Mengqi, MA in Global Media &
Transnational Communications



“It was inspirational to study at Goldsmiths, and the time I spent there has had a central influence on my creativity and artistic vision.”

Siobhan Daly, producer and artistic director



“I got a degree, but so much more, with the kind of atmosphere that nurtured creative impulse and talent, and encouraged initiative and risk-taking.”

Paul Englishby, Emmy Award-winning composer



“Sociology is your life and my life. We all have stories to tell... we must tell them. Our voices must be heard.”

Heidi Safia Mirza, academic and author



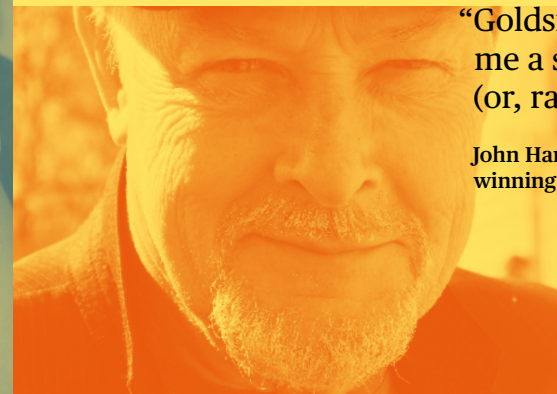
“The environment at Goldsmiths is vibrant, diverse and an inspiring place to be.”

Simone, MA Applied Theatre: Drama in Educational, Community & Social Contexts



“Goldsmiths politicised me. It gave me a strong sense of social justice (or, rather, injustice).”

John Harvey, award-winning crime writer



OUR ACADEMIC DEPARTMENTS

- Anthropology
- Art
- Computing
- Design
- Educational Studies
- English & Comparative Literature
- History
- Media & Communications
- Music
- Politics & International Relations
- Psychology
- Social, Therapeutic & Community Studies
- Sociology
- Theatre & Performance
- Visual Cultures

We also have many specialist research centres, units and institutes, including:

- Centre for Cultural Studies
- Confucius Institute
- Institute for Creative & Cultural Entrepreneurship
- Institute of Management Studies



Interdisciplinarity at Goldsmiths

At Goldsmiths, it's not unusual for academics to collaborate on research projects and initiatives spanning lots of different areas and departments. It's one of the things that's so special about studying a postgraduate degree here - you won't be confined by the boundaries of your department or discipline.

We've listed our study opportunities in this guide on pages 62-107, and we've broadly divided them according to the department that runs each degree. But the beauty of many of our programmes is that they work across various subject areas and themes, including:

- Migration
- Digital media
- Gender and sexualities
- Science and technology
- Economy
- Urban studies
- Sound

For a full list of our programmes, see the index on pages 122-123.



Find out more

Explore our postgraduate study opportunities by theme at www.gold.ac.uk/course-finder

TYPES OF POSTGRADUATE COURSE

Taught Masters (eg MA, MFA, MMus, MSc)

Masters degrees are taught courses that usually last 12 months (full-time). Exceptions are our MFA programmes and our MA in Art Psychotherapy and MA in Dance Movement Psychotherapy (page 105) that last two years (full-time). Masters degrees often culminate in a research project or dissertation, which can form the basis for further study such as a PhD. We offer the following Masters degrees at Goldsmiths:

- MA - Master of Arts
- MFA - Master of Fine Arts
- MMus - Master of Music
- MSc - Master of Science

Research degrees

Research Masters (MPhil, MRes)

These courses will encourage you to think independently and produce original material.

An MRes (Master of Research) is similar to an MPhil but also includes specialist training in research skills. It's often associated with the social sciences and is primarily a taught programme. The MRes usually lasts for one year (full-time).

An MPhil (Master of Philosophy) is usually a precursor to a PhD (Doctor of Philosophy): you register for the MPhil and if your work is suitable you can be 'upgraded' to a PhD programme.

PhD

A PhD (or 'doctorate') is a research degree, and is the standard requirement for anyone who wants to become a researcher or an academic. It consists of a research project and a substantial thesis, which is guided by at least one - and, more often, two - supervisors. The length of time it takes to complete a PhD varies, but is typically at least three years, with a period of up to a year for writing up the thesis.



HOW TO APPLY



Find out more
Find out more about
our entry requirements
on pages 114-115

For the majority of our postgraduate programmes you apply directly to Goldsmiths using our online application system. Just visit the programme page of the course you're interested in on our website, where there'll be more information about the steps you need to go through.

The exceptions are our PGCE programmes (you apply through UCAS Teacher Training) and our MA in Social Work (you apply through UCAS).

If you're an international student you can apply for any of our full-time programmes.

When to apply

We accept applications from October for students wanting to start the following September. Some of our programmes have application deadlines, and if you're applying for funding (see pages 118-121) you may need to apply by certain dates. Bear this in mind so that you've got enough time to complete your application.

Selection process

After you've submitted your application it will be reviewed by our staff. You may also be invited to an interview (either in person or via Skype). Once your application and qualifications have been considered, we'll let you know whether you'll be offered a place.

MPhil and PhD programmes

If you're applying for an MPhil/PhD you should get in touch with the programme contact or academic department in which you'd like to study before you submit your application. It may also be possible to arrange an advisory meeting with your preferred supervisor. As part of your application you'll need to write a research proposal. This should:

- Persuade the reader that you have an interesting project in mind, that you have original ideas, and that you have the skills and understanding required to achieve your plans
- State your case clearly and accessibly
- Be realistic in terms of what you expect to achieve with your research
- Explain how your research will fit within the scholarly community that you're applying to be a part of, and make connections with the supervisor you'd like to work with

Read our advice for writing a research proposal at www.gold.ac.uk/pg/apply/research-proposal

STUDYING A RESEARCH DEGREE

Graduate study at Goldsmiths is a transformative experience that will prepare you for leadership and innovation in your chosen field. We have around 800 research students, and community and collaboration are vital to the research experience here.

Induction programme

In addition to the Goldsmiths-wide Welcome Week (see page 44), your department will arrange an introduction to their departmental facilities and any additional support you might need. There's also a week-long induction held by the Graduate School (see page 25) at the start of term.

The structure of your research degree

You will have a main supervisor and a second supervisor. During your first three months at Goldsmiths your supervisors will help you draw up a research plan and set detailed objectives for your first year. They will also be available to offer advice and suggestions as the project evolves, and you'll receive regular one-to-one tutorials.

Throughout your programme you'll progress with your independent learning, but there are also lots of training and professional development opportunities (see page 25) that you can make the most of. And each year you'll complete an annual progress report to reflect on how your research is developing.

You should aim to complete and submit your thesis within an agreed timeframe: usually three to four years for full-time students, and four to six years for part-time students. You'll be assessed on your thesis (which may contain a practical component depending on your research), and on an oral examination (viva voce).



“From the start of the application process, I got excellent support and encouragement from the member of staff I made first contact with, an experience that gave me the confidence to continue with my application. The friendly atmosphere in the department, as well as its excellent academic reputation, made me decide to come to Goldsmiths.

The opportunity given to me by the Graduate School to practise giving presentations, along with the encouragement and support from my supervisors to think about conferences and publications, means that an MPhil/PhD at Goldsmiths provides excellent preparation for an academic career.

I have found my supervisors to be friendly and approachable and have heard similar commendations from other students. So Goldsmiths provides an excellent environment to work in and also to integrate! There are plenty of opportunities to socialise and to get to know other students and staff, both within the department and the university as a whole.”

Bomiegha, MPhil/PhD in Educational Studies



Upgrading from MPhil to PhD registration

You'll usually begin your research degree by registering as an MPhil student, and you can apply to upgrade to PhD registration when you have completed an agreed part of the research and training programme: usually after 18 months if you're studying full-time, or 24 months if you're studying part-time. Upgrading is a major milestone in your progress. It's also an opportunity to experience a viva voce on your work, which is valuable practice for your PhD viva later.

If you decide not to upgrade to PhD registration you can submit your thesis for an MPhil after two years if you're studying full-time, or after three years if you're studying part-time.

Training opportunities

In your first year you'll undertake training to develop your research skills and techniques. Some of this training will be through your supervision, while some departments organise discipline-specific seminars and training courses. In addition, the Graduate School (see right) offers interdisciplinary core research training.

We also support you in thinking about how to plan for life after your PhD, and offer courses for early career researchers and for anyone who is planning to become an academic.

Graduate School

Doctoral and graduate research is immensely rewarding. It requires innovation, drive and, at times, endurance. The Goldsmiths Graduate School can support you throughout this journey.

The School acts as your advocate within Goldsmiths, giving you advice and direction if you need it, and providing dedicated research facilities and training to make sure you're well equipped for the challenges of graduate research. It also offers funds to enable you to attend conferences and/or conduct research at other institutions, and to develop your own conferences and events at Goldsmiths.

Every year the School organises the Graduate Festival - a festival of ideas and research. Consisting of conferences, public lectures and conversations with leading thinkers, it's a great opportunity for you to present your research, get involved in conference organisation, and immerse yourself in the wider academic community. There are also practical sessions on the examination process, including the PhD viva and the upgrade, drawing on the experiences of recently successful PhD students. This provides a great opportunity for you to learn from students who have recently gone through the process.



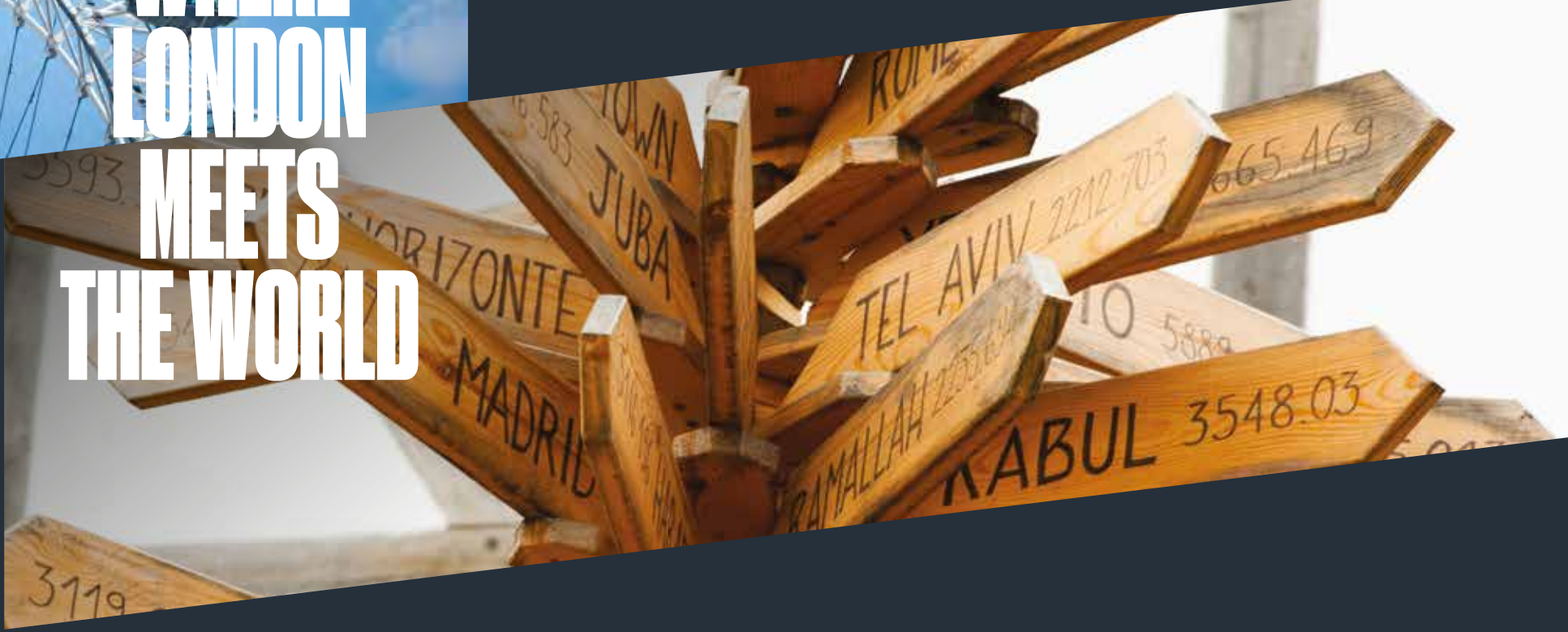
Key fact

As a member of an institute of the University of London, you can also access the research events at the 10 Institutes of the School of Advanced Studies. Find out more at www.sas.ac.uk



WHERE LONDON MEETS THE WORLD

One of the world's greatest cities, connected to the very heart of global industry. Study in vibrant London, meet inspiring students from 140 countries, and experience all the city has to offer.





LONDON-BASED

London is an exciting place to be a student. No wonder it's been voted one of the five best places in the world to come to university*. Life here is culturally and creatively rich. Whether you want to watch the latest hit play, or try food you've never eaten before, there's always something new to explore.

*QS Best Student Cities 2016



Where London meets the world



London on a budget

You don't have to spend a fortune to enjoy the best of the capital. There are lots of events, talks, lectures and places to visit for free, including the British Museum, National Gallery and the Victoria and Albert Museum. To find more great ideas that won't cost a penny, visit www.timeout.com/london/things-to-do/free-london

Once enrolled, you can apply for an NUS (National Union of Students) card, which gets you discounts on everything from shopping and eating, to entry to big exhibitions, cinemas, and many nightclubs. And you can benefit from 30% off travel costs with an 18+ Student Oyster card.

The centre of industry

London is home to the global media, arts, technology and finance industries. With so many graduate employers nearby, you have an advantage when it comes to networking and applying for internships or jobs. And because the city is where the corporate world meets the alternative, London is the place to be if you're interested in working with community groups, campaigners or start-up organisations.



There are lots of universities in London, but not many with that special combination of urban life in a bustling area, a single campus with a thriving student community, and access to one of the world's greatest cities.



Find out more

Take a tour of our students' favourite parts of London - vimeo.com/goldsmiths/london2016





Our eclectic campus is made up of historic buildings, modern spaces, and even a repurposed church and town hall. It's a great metaphor for Goldsmiths itself – diverse, curious, and inventive.

SINGLE-SITE CAMPUS IN A DYNAMIC AREA

Goldsmiths is based in New Cross, South-East London. It's in zone 2 (central London is zone 1), and about seven minutes by train from London Bridge. It's only 15 minutes by Overground train from the nightlife of East London. So you're just minutes away from the heart of this great global city.

Our campus

We're lucky to have one compact, friendly campus in New Cross, with all lectures, tutorials and the Students' Union here. Many of our halls of residence (see pages 36-37) are within walking distance, so it's easy to meet friends and enjoy a close-knit student community. So you get the best of London and a great single-campus experience.

New Cross

The Guardian newspaper said, "there's a definite buzz around the Peckham-Camberwell-Deptford triangle these days, and New Cross is at its centre." New Cross has many great places to eat, from Chinwag (for burgers, salads and brunch) to the London Particular, specialising in seasonal and healthy food. At the Amersham Arms you can enjoy top stand-up comedy and live bands, or to escape the bustle of the busy New Cross Road head up to Telegraph Hill, for a park and amazing views. Explore other New Cross landmarks at www.gold.ac.uk/local



Find out more

Take a tour of our campus through our students' eyes at vimeo.com/goldsmiths/campus



Getting around

See the green map on pages 32-33 to see how easy it is to reach areas like Shoreditch and Hoxton on the Overground



Nearby areas to explore

There are plenty of interesting neighbourhoods around New Cross, full of exciting nightlife, tranquil parks and bustling markets. Here are a few nearby gems:

Deptford

A 10-minute walk from Goldsmiths, Deptford Market holds all the wonders of the world's cuisine, and some treats for bargain lovers. There's a strong creative community, with many galleries and filmmakers working in the area. You can see some of the best at the Deptford X arts festival - www.deptfordx.org

Greenwich

Home of the Cutty Sark and Henry VIII's favourite London residence, Greenwich is a jewel of South-East London. There are markets, cinemas, bars, comedy nights, the Maritime Museum and a huge Royal Park to enjoy. And when you get tired of all that, you can take a stroll along the Thames.

Brockley

Nearby Brockley is home to many students and young professionals, with lots of independent bars and coffee shops. There's a fantastic weekly food market and one of London's best fringe theatres, Brockley Jack. You may also spot a celebrity or two walking their dog on Hilly Fields, which has great views across the city.

Peckham

The fact the local newspaper is called 'The Peckham Peculiar' says a lot about this 'in vogue' area. It's a hot pot of street food, bargain cinema, late-night bars, boutiques and pound shops. So you can buy everything from African land snails to happy-hour cocktails, all within a few minutes of each other.

Camberwell

Just beyond Peckham is 'high-rise and historic' Camberwell, with a good mix of student-friendly bars popular with Goldsmiths students. The South London Gallery with its cosy café is well worth a visit, and within a square kilometre you can find restaurants offering food from Italy to Ethiopia.

Brixton

Also worth exploring is Brixton. From the small independent bars and eateries of Brixton Village to well-loved entertainment venues like Dogstar and the O2 Academy, the whole area guarantees a night out that's a bit different.



LONDON ZOO

REGENTS PARK

GAMDEN TOWN

NORTH LONDON

King's Cross

15 mins on the Overground from New Cross
Shoreditch

Haggerston

Hoxton

Stratford

OLYMPIC PARK

EAST LONDON

BRICK LANE

Shoreditch High St

Whitechapel

London City Airport

Paddington

SELFRIDGES

THE WEST END

25 mins by train from New Cross

Oxford Street

BRITISH MUSEUM

ST PAUL'S CATHEDRAL

THE GHERKIN

Cannon St

TOWER OF LONDON

Shadwell

WEST LONDON

MAYFAIR

Charing Cross

TATE MODERN

THE GLOBE

TOWER BRIDGE

Wapping

HYDE PARK

ST JAMES' PARK

BUCKINGHAM PALACE

LONDON EYE

Waterloo

THE SHARD

7 mins by train from New Cross

London Bridge

BERMONDSEY

Rotherhithe

CANARY WHARF

Heathrow Airport

ROYAL ALBERT HALL

V&A MUSEUM

Victoria

BIG BEN

LAMBETH

Waterloo

London Bridge

Canada Water

Surrey Quays

Canary Wharf

BATTERSEA POWER STATION

30 mins by train from New Cross

Clapham Junction

SOUTH-WEST LONDON

O2 ACADEMY BRIXTON

Brixton

SOUTH LONDON GALLERY

15 mins on the bus from New Cross

Peckham

New Cross Gate

New Cross

CUTTY SARK

Greenwich

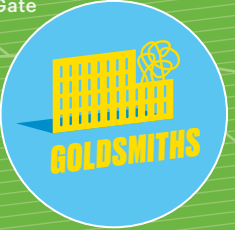
DEPTFORD

CAMBERWELL

Gatwick Airport

SOUTH-EAST LONDON

GREENWICH PARK





ACCOMMODATION

Studying in an exciting city like London is a fantastic experience. And it's even better when you know you're living somewhere safe, comfortable and affordable. Goldsmiths offers a range of options - whether you prefer the supported environment of halls of residence on or near campus, or more independent living that lets you mix with a wider London student population.

Where London meets the world



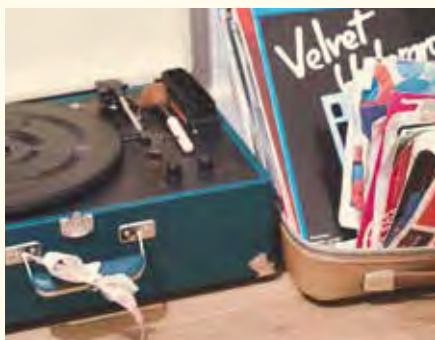
Find out more
www.gold.ac.uk/accommodation/halls



Find out more
 Watch our accommodation trailer at vimeo.com/goldsmiths/halls



Key fact
 The Students' Union and the University of London hold flat-sharing events to make it easier for you to meet new friends and find flatmates



Halls of residence

We offer self-catered accommodation within an easy commute of the campus; many of our halls are in walking distance of Goldsmiths. Most of the accommodation comprises single occupancy rooms, although some double bedrooms are available if you'd like the option of sharing. Some studio flats are also available. If you want to share with only people of the same gender, please let us know on your application and we will try to meet requests.

Rent includes all utility bills and basic possessions insurance, and staff are on hand day and night. The halls are managed by Goldsmiths or in partnership with a private provider.

Once you've applied for a place at Goldsmiths, we'll send you more information about applying for halls of residence.

International students: We understand that having to arrange somewhere to live in a different country can be very stressful, so we guarantee a place in our halls of residence to all new international students*.

Accessible accommodation: If you have specific accessibility requirements, contact our Accommodation team. They'll be happy to help.

Flats and houses leased by the University of London

Accommodation in flats and houses can be found and managed for you by the University of London Housing Services (ULHS). This means you can live independently with the reassurance of having the University of London as your landlord. Rents are competitive, and you can choose to live close to the Goldsmiths campus.

Privately rented flats and houses

Renting your own flat or house means you decide where you live, who you share with, and the type of accommodation you want. South-East London is relatively cheap compared to other parts of the capital.

Couples and families

If you're coming to London to study with your partner or family you can access the University of London Housing Services database of private housing. This gives you lists of places available to rent. Visit www.housing.lon.ac.uk to find out more.

Halls of residence

	Distance to campus	En-suite bathroom	Students per flat/floor
Batavia Mews	2 minutes' walk	No	7 to 20
Chesterman House	2 minutes' walk	Yes	7 to 8
Dean House	2 minutes' walk	Yes	5
Landale House	10-minute commute	No	4 to 5
Loring Hall	Within campus grounds	Yes	4 to 8
Mansion View	30-minute commute	No	2 to 6
McMillan Student Village	20 minutes' walk	Yes	6 students per flat; single studios available
Quantum Court	20-minute commute	Yes	1 to 6
Raymont Hall	20 minutes' walk	Yes	4 to 21 (corridor layout)
Surrey House	5 minutes' walk	Only if you're in a studio	Varies (corridor layout)
Surrey House Annexe	5 minutes' walk	Yes	8

Please note: this list is subject to change as not all halls of residence may be available every year
 * Terms and conditions apply. Please visit www.gold.ac.uk/accommodation for application deadlines



KEY

Goldsmiths buildings

1. Richard Hoggart Building
2. College Green
3. Professor Stuart Hall Building
4. Lockwood Building
5. Club Pulse Fitness Centre & Gym
6. Whitehead Building
7. St James Hatcham Building
8. Ben Pimlott Building
9. Deptford Town Hall Building
10. Laurie Grove Baths Building
11. Careers Service
12. Chaplaincy
13. Warmington Tower
14. Rutherford Building Library & IT Services
15. Education Building
16. Students' Union

Information icons



Railway station



Overground station



Underground station



Location marker



Halls of residence

These are the halls of residence that are currently available. Check our latest halls at www.gold.ac.uk/accommodation/halls



Find out more
www.gold.ac.uk/facilities



FACILITIES

Our single-site campus means you won't have to travel far to get to some impressive facilities - from a library you can work in 24 hours a day, to open-access computers with the latest software.

The Library

Our Library, which is open 24 hours a day during term time, has been recognised as one of the best in the country for facilities and opening hours. It has space for individual and group study, including two postgraduate group study rooms. The Library contains a wealth of printed and electronic resources, and our reading list system provides easy access to module reading materials. We run a variety of sessions to help you familiarise yourself with the library and enhance your academic skills. As a Goldsmiths student you can also borrow books and make remote use of electronic resources from Senate House Library (University of London) and use many other university libraries, within London and beyond.

Computers and other equipment

You can use PCs or Macs inside the Library and at many points around the campus, where you can access the web, your Goldsmiths email and shared files using our campus wireless network. Our virtual learning environment, 'Learn.Gold', gives you access to online learning activities and materials. You can borrow audio-visual equipment like cameras, lighting equipment and projectors from our Media Equipment Centre. Our Digital Media Suite provides video- and audio-editing software and sound-proof editing booths. We also have an in-house print department, which offers digital printing and finishing services - perfect for producing things like colour portfolios and other creative work.



Key fact

Goldsmiths now has its own cinema, which shows the best independent and blockbuster releases on weekday nights and at weekends



Departmental facilities

Many of our academic departments have their own facilities and access to specialist materials, including:

- **Art:** studio space and research labs for casting, constructed textiles, fine art printmaking, media research, metal, photography, print and dye, stitch and fabric, and woodwork
- **Computing:** labs with the latest technologies and software, including 3D printers, a motion-capture suite, and games lab
- **Design:** workshops with the latest digital equipment, computing suites and studio space
- **Media and Communications:** photography, radio and TV studios as well as the latest digital video and audio-editing equipment, ENPS (essential news production system) facilities, animation and image-manipulation software and hardware
- **Music:** pioneering sound studios (including the Electronic Music Studio), a commercial-standard recording studio, and numerous performance opportunities and activities
- **Psychology:** research laboratories - including electroencephalogram (EEG) and brain-stimulation labs for neuroscience research, an infant lab, and a visual perception and attention laboratory
- **Theatre and Performance:** a 160-seat theatre, performance studios, a scenography workshop, wardrobe and props stores



Eating and drinking

There are lots of places to eat and drink on campus - whether you want to grab a coffee, take away a snack, or sit down for a hot meal with friends. They include:

- **The Refectory:** a newly refurbished canteen
- **Loafers Café and The Pod:** serving food and Costa coffee
- **Professor Stuart Hall Building Café:** for hot meals overlooking the picturesque College Green
- **Library Café:** for Fairtrade snacks and drinks while you study
- **Students' Union Shop:** offering snacks, drinks and toiletries
- **Natura:** a vegetarian/vegan café in the Union

You'll also find a diverse range of restaurants, cafés and shops just a few minutes' walk from Goldsmiths around New Cross.



Cinema

We have a cinema on campus, Curzon Goldsmiths, where you can experience the best films from around the world. Open to the public on weekday evenings and all day at weekends, there are also regular director question and answer sessions. Find out more at www.gold.ac.uk/life-on-campus/curzon-goldsmiths

Gym

Our on-campus gym, Clubpulse, offers subsidised membership, 90 fitness machines, a dance studio and a great range of classes, from 'insanity' workouts to group cycling and yoga. Find out more at www.clubpulsegoldsmiths.co.uk

Sports

We have facilities for sports on campus and nearby, and at the centre of Goldsmiths is our College Green, which is used for things like football and rugby training. We also have tennis and netball courts, and a sports ground in nearby Sidcup.



University of London

Goldsmiths, alongside 16 other institutions, is part of the larger University of London. This means that as well as being a Goldsmiths student, you'll also be a student of this larger confederation of self-governing institutions, and will have access to a range of services and facilities offered to its total of 120,000 students.

As a joint student of Goldsmiths and the University of London, you can use one of the world's most significant library collections in the arts, humanities and social sciences, including Senate House Library (www.senatehouselibrary.ac.uk). You'll be one of 100,000 registered readers from Goldsmiths and other University of London institutions (www.london.ac.uk/libraries).

In addition to the Goldsmiths Students' Union and accommodation service, you'll also be able to access these respective University of London centralised services. You can find out more at www.studentcentral.london and www.halls.london.ac.uk





STUDENTS' UNION

At Goldsmiths, you're part of an inspiring student community. You'll meet people who could become friends for life, and get involved in an exciting range of extra-curricular activities.



Goldsmiths
SU



Goldsmiths
SU



Goldsmiths
SU

The Students' Union (SU) plays a big part in life at Goldsmiths. You can:

- Attend events - from pub quizzes to club nights to live music sessions
- Choose from more than 100 sports and societies
- Get involved in student media
- Speak to the Union's Postgraduate Officer if there's anything you'd like them to represent you on
- Run for election to represent fellow students
- Campaign on issues close to your heart

Clubs and societies

There are lots of sports clubs you can join - from competitive teams that take part in weekly leagues, to recreational teams you can train with. Qualified coaches lead sessions, and you could also decide to qualify as a coach yourself.

Current students run our societies, which range from religious to social. Joining a society is a great way to meet like-minded people, and to try new things. There are also academic societies, which are run as a social and educational space for you to get to know students in your department.

In addition to a range of sports clubs you could also join societies that include:

- Acting and Filming Society
- African Caribbean Society
- Amnesty International
- Anime Society
- Comedy Society
- Craft Beer Society
- Debating
- Design Marketplace
- Drama Society
- Gaming Society
- Hacksmiths
- International Student Society
- Islamic Society
- Jewish Society
- Labour Society
- LGBTQ Society
- Meditation Society
- Model United Nations
- Musical Theatre Society
- Rock Climbing
- Taekwondo
- Wired Radio

Sport ambassadors

For each sport the Students' Union offers there is the opportunity to become a sports ambassador. They work closely with the Union's sports committee and activities staff to help increase and widen participation in their sport.

Media

If you're thinking about a career in journalism or you fancy trying out radio presenting, our student media is a great place to start. You could get involved with Wired Radio, The Leopard newspaper, or award-winning Smiths magazine.

Campaigning

The Students' Union has a long history of campaigning on local, national and international issues, and we've been voted one of the UK's top universities for our political scene (Which? University 2014).

Volunteering

Through the RAG (Raise and Give) Society you can volunteer with the local community, and fundraise for causes you believe in. And if you're elected for voluntary part-time positions in the Union you'll gain excellent experience in getting your voice heard.

Advice service

The Students' Union provides a confidential, non-judgmental and free advice service available to all students. It is independent from the university, so what you discuss will not appear on your Goldsmiths file without your consent. The advice team provides specialist advice and support on academic issues such as formal complaints and appeals and disciplinary hearings. However, they are also available to help with any problems with your accommodation, course, job, or finances. And if they can't help, they'll know someone who can.



Key fact

You'll also get free membership of Student Central, the University of London union, and will be able to access their social and sports facilities too



Find out more

www.goldsmithssu.org

SUPPORT

We're here to give you all the help, support and guidance you need during your time at university - whether things are going well or if you're experiencing a tough patch.

We can support you in lots of different ways.



Find out more
www.gold.ac.uk/support



Key fact
Research students will benefit from the support of the Graduate School (page 25)

Welcome week

Each September, we host a week packed full of events to welcome new students - from official inductions to campus tours and a Freshers' Fayre that everyone can get involved in.

If you're joining us from outside the UK, there are plenty of exciting opportunities to get involved and find out all you need to know about your new life as a student in London. Why not take a sightseeing boat trip on the river Thames as we explore iconic sights, or make friends from around the world at an international meet and greet hosted by the Students' Union?

We try to put everything in place to make sure you have a great time meeting other new students and getting to know the campus and everything Goldsmiths has to offer.

Your academic department

You'll have a personal tutor in your department to support you academically and advise you on other support services. There's also a Departmental Student Coordinator - a fellow student who is there to represent you on academic issues.

English language support during your studies

We offer in-session courses for students enrolled on Goldsmiths degrees who don't speak English as their first language. These courses are designed to develop your academic language and study skills in line with the tasks you will face on your degree. Courses aim to:

- Give you an awareness of the conventions and requirements of traditional academic writing and presentations
- Help you expand and develop language that applies in your area of study
- Familiarise you with other written genres (for example, letters requesting sponsorship, non-traditional creative essay forms, or exam techniques)

Courses run for two hours each week during the autumn and spring terms, and in many cases

relate directly to your subject of study. You don't have to pay an additional cost for these classes.

In addition to courses for second-language speakers, some departments arrange short workshops on academic conventions and study skills for native English speakers.

We also offer specialist programmes for international students: see pages 108-113 for more information.

Academic writing

Do you need advice on writing your essays or presenting your work? Goldsmiths runs sessions on academic literacy, study skills, and language development. You can also book an appointment with one of our resident Royal Literary Fellows - professional writers who can help you improve your essay-writing skills.

The Student Centre

The Student Centre provides a wide range of services and support in one location. There are specialist staff who can assist you with any problems, and who run events and activities to help you make the most out of your time at Goldsmiths. The Student Centre is also the place to go for Registry Services such as requesting an enrolment or council tax letter. If you have any questions, get in touch and they'll point you in the right direction. Please drop in or email studentcentre@gold.ac.uk

Advice

The Student Centre has a confidential service, where staff can support you with welfare matters like finance, consumer issues, and housing. They can also assist you with your student loan enquiries, and help you access discretionary funding in cases of hardship.

Inclusion and learning support (ILS)

ILS assists students in ensuring they're able to meet their full academic potential. The team provides advice and guidance to disabled students on reasonable adjustments and additional support, and free screenings for students who think they may have a specific learning difficulty such as dyslexia. Disabled students contacting the team will be offered a Reasonable Adjustment Support Agreement

(RASA), which will outline the support and adjustments that can be expected from Goldsmiths. The team also offers study skills support for all students including bookable one-to-one sessions and a series of academic skills workshops that are offered throughout the year.

Wellbeing and mental health

The Wellbeing Team assists students who experience emotional or personal issues affecting their mental health and their studies. In addition to a daily wellbeing drop-in service, the team holds workshops and activities throughout the year. Topics include: dealing with stress, resilience, 'finding your voice' and meditation. Offering a practical approach, students experiencing health difficulties can be supported with their transition to university life, overcoming barriers to study, enhancing their student experience, and accessing internal and external support agencies if appropriate.

Chaplaincy

The Chaplaincy is a multi-faith team here for everyone, regardless of religious beliefs and practices. They welcome anyone who wants someone to talk to, or just spend time with.

Health

If you live in halls of residence or close to campus you can register at one of several nearby surgeries. There's also an NHS Walk-in Centre close to the campus open 365 days a year. If you're an international student studying for more than six months, you'll be entitled to free treatment from the NHS. You'll pay a surcharge when you apply for your visa. Find out more at www.ukcisa.org.uk

Students' Union

From checking your housing contract and helping with budgeting, to giving support if you're struggling with essay deadlines, the Students' Union can provide confidential advice on lots of things. There's also a dedicated Welfare and Diversity Officer and an Education Officer based in the Union.

Figures show the number of students at Goldsmiths in 2015/16 who have joined us from outside the UK



GOLDSMITHS AND THE WORLD

Goldsmiths is an international institution that works with universities and creative organisations across the globe. This helps to create a thriving and exciting community, and can help you build a global network of contacts for your future.

International impact

As you can see from the map above, we welcome students from all over the world. Our academics are just as cosmopolitan, and their experience and perspectives enrich their teaching. In the most recent Research Excellence Framework (REF), nearly three quarters of our research was rated as world-leading or internationally excellent. This means you'll be working alongside academics who lead their fields and influence global debate.

Country-specific information

On our website you'll find information relating to individual countries, including:

- How to apply
- Country visits
- Entry requirements
- Information on fees and funding
- Information on your community in London
- Local representatives
- Student and alumni stories

Go to www.gold.ac.uk/international/regions

Erasmus+

Some academic departments have exchange agreements with universities across Europe, giving you the opportunity to study abroad for a term. Find out more at www.gold.ac.uk/erasmus

Study Abroad

International students have the opportunity to come to Goldsmiths to live, study and socialise with postgraduate students, and the opportunity to gain academic credits from a British university. Find out more about the programme at www.gold.ac.uk/studyabroad



Where London meets the world

YOUR FUTURE

Whether you have a clear idea of what you want to do in the future, or you're open to the unexpected opportunities that a postgraduate degree might present to you, at Goldsmiths you'll find the right environment to start shaping your next steps.

Perhaps you're a social entrepreneur wanting to make a difference. Or maybe you're a creative starting out a portfolio career. Regardless of your future plans, you'll be able to access extensive careers support and some fantastic facilities and opportunities - not least through the Goldsmiths Careers Service.

Using our services, you can:

- Chat to our careers consultants for ideas about careers and finding work
- Search for jobs and internship opportunities on our JobOnline database
- Get your CV or application checked and have a practice interview with us
- Attend workshops about job hunting and networking
- Develop your entrepreneurial skills and attend events covering business planning and creativity
- Meet employers on campus - we regularly hold information and skills sessions, as well as industry panels where you can hear from people (including Goldsmiths graduates) working in, for example, the media, publishing and not-for-profit sectors
- Do a work placement - some of our degrees include work placement modules, giving you the chance to apply your theoretical knowledge to real-life situations, while developing your skills and making contacts



CareersGold

Goldsmiths.
Careers

Key fact

Goldsmiths students recently completed placements at Age UK, Christie's, Sadlers Wells Theatre and Stonewall



Key fact

Goldsmiths graduates go on to work in all sorts of roles - from editors to curators, and business analysts to freelance filmmakers



Find out more

www.gold.ac.uk/careers



Our graduates now work at organisations including Accenture, Arts Council England, Barnado's, the BBC, British Museum, Sunday Times Magazine, Tate Modern and Unilever





VISIT US

The best way to experience Goldsmiths is to visit us. You'll really get a feel for the place - from the exciting things that go on here to the welcoming atmosphere.



Our next postgraduate open evening takes place on: Wednesday 23 November 2016, 4pm-7pm

Open days

We hold open days throughout the year where you can chat to staff, tour the campus, and come to talks and events. Our next postgraduate open evening takes place on Wednesday 23 November 2016, 4pm-7pm. For future dates visit www.gold.ac.uk/open-days

Virtual open days

We also run virtual open days, giving you the chance to experience Goldsmiths on your computer or tablet, and to put your questions to staff and students during regular web chats. Find out when the next ones are at www.gold.ac.uk/open-days/virtual

Department open days

Some academic departments hold their own open days - contact a department directly for details. You can find their details at www.gold.ac.uk/departments



Find out more
www.gold.ac.uk/visit-us

Campus tours

Take a look around Goldsmiths and get a feel for the area during a student-led tour. Check when the next tours are happening at www.gold.ac.uk/campus-tours

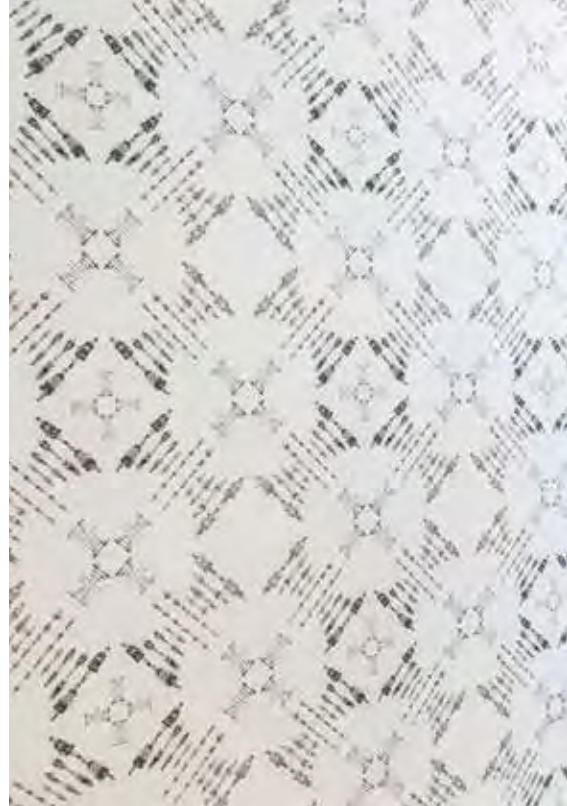
You're also welcome to come and take a look around the campus on your own during working hours. It's best to visit during term-time when the campus is full of students - you'll find details at www.gold.ac.uk/term-dates

Events

Music recitals, degree shows and other lively and inspirational public events - most of which are completely free - take place almost every day at Goldsmiths. Feel free to come along; you can check listings at www.gold.ac.uk/events











WHERE DIALOGUE MEETS DEBATE

Exchange ideas with students and staff who are just as passionate as you. Engage in discussions that will open your mind to new ideas. Develop in an environment that dares you to be bold.



ANTHROPOLOGY

The Department of Anthropology at Goldsmiths is lively and politically conscious: our staff are active researchers, committed to publicly engaged anthropology across most areas of the world - from London to Ladakh.

Student insight

“Having worked as a political analyst and founded several creative organisations in Brunei, I set out to find a university that does not focus primarily on theory, that recognises the complexity of what it means to be a human, and advocates creativity. This MA immediately caught my attention. I have no regrets taking it - the lecturers in the department are very approachable and my classmates are very supportive of each other. We are taught to think beyond theories. Students are encouraged to ‘do’ instead of just think. The course also allowed me to do a work placement module in order to merge academic and life experience. Through volunteering, I’ve met and worked with people I looked up to prior to arriving in London. I would not get that opportunity if Goldsmiths had not encouraged me.”

Nurfateha, MA in Development & Rights



Why study anthropology at Goldsmiths?

We’re a stimulating, active research department, with a dedicated visual anthropology centre that hosts seminars, talks and screenings in anthropology, documentary and the visual arts.

You can choose between Masters degrees that cover diverse areas from social and visual anthropology to human rights and development. Several of our MAs include placement opportunities, and our graduates go on to work for the UN, World Bank, NGOs (non-governmental organisations) and CSR (corporate social responsibility) consultancies.

You’ll be able to access a wide variety of research areas including regional and subject specialisms, and we have links with institutions including the Horniman Museum, the British Museum, and the University of Oslo.

The MAs in Applied Anthropology are delivered in conjunction with the Department of Social, Therapeutic and Community Studies. See pages 68-69 for details.

Find out more about our staff and their research interests at www.gold.ac.uk/anthropology/staff



Key fact

Anthropology: 6th in the UK for the quality of our research** and 36th in the world in the QS World University Rankings by Subject 2016



Find out more

www.gold.ac.uk/anthropology or watch our departmental film at vimeo.com/goldsmiths/anthropology



Taught programmes

MA in Social Anthropology

www.gold.ac.uk/pg/ma-social-anthropology

MA in Visual Anthropology

www.gold.ac.uk/pg/ma-visual-anthropology

MA in Anthropology & Cultural Politics

www.gold.ac.uk/pg/ma-anthropology-cultural-politics

MA in Development & Rights

www.gold.ac.uk/pg/ma-development-rights

MA in Applied Anthropology & Community Arts

www.gold.ac.uk/pg/ma-applied-anthropology-community-arts

MA in Applied Anthropology & Community & Youth Work (with Professional Validation)

www.gold.ac.uk/pg/ma-applied-anthropology-community-youth-work

MA in Applied Anthropology & Community Development

www.gold.ac.uk/pg/ma-applied-anthropology-community-development

Research programmes

MRes in Anthropology

www.gold.ac.uk/pg/mres-anthropology

MRes in Visual Anthropology

www.gold.ac.uk/pg/mres-visual-anthropology

MPhil & PhD in Anthropology

www.gold.ac.uk/pg/mphil-phd-anthropology

MPhil & PhD in Visual Anthropology

www.gold.ac.uk/pg/mphil-phd-visual-anthropology

You can check programme pages on our website for entry requirements; see pages 114-115 for more information

ART

The Department of Art specialises in making, curating and writing about contemporary art in a dynamic, critical and interdisciplinary environment. We count among our alumni some of the most influential contemporary artists working today.

Student insight

“I’d been working as an independent artist for a few years, and was really interested in coming to London knowing that it is one of the most important centres of contemporary art.

I was particularly attracted to the critical thinking approach of Goldsmiths as I feel it is of paramount importance for the full development and maturity of an artist. And was I correct! Not only have I met the most critically engaging environment where every single person has his/her own strong opinions and wants to discuss and participate in a dialogue, but I’m also very motivated by how the tutors challenge you and push you to be bold and think outside the box. I’m positively sure that when I graduate I’ll be more than ready to participate in the professional world.”

Derzu, MFA in Fine Art



Why study art at Goldsmiths?

We have a worldwide reputation for excellence in art education. A high proportion of our graduates have gone on to become leading artists in Britain and internationally.

Our MFA in Fine Art subjects art-making to sustained and rigorous critical scrutiny. You will actively engage in seminars, tutorials and lectures to strengthen the motivation, self-reflection and ambition of your practice and its leading ideas.

The MA in Artists’ Film is ideal for artists using film, video and moving image who want to develop their practice and their networks to a level that enables them to work within the professional art world.

We have an international reputation for creativity and innovation, and we’re one of the top fine art research departments in the country.

We work with a network of highly accomplished artists, curators, galleries and museums to create an inspiring environment in which you can study and develop your own independent fine art practice.

You’ll benefit from excellent technical facilities. Our laboratories provide the highest quality equipment and training in a wide range of technical areas, including digital media, photography, printing, textiles, woodwork, casting, metals and ceramics.

We provide space for art studios, performance work, installations, temporary projects and exhibitions.

The department is actively engaged with London’s world-leading professional art scene, and our location provides the opportunity to make the best possible use of the capital’s resources, including a diverse range of exhibitions and events.



Key fact

11th in the world for art (QS World University Rankings by Subject 2016)



Find out more

Read about our staff and their research interests at www.gold.ac.uk/art/staff



Taught programmes

MFA in Fine Art △ □
www.gold.ac.uk/pg/mfa-fine-art

MA in Artists’ Film* □
www.gold.ac.uk/pg/ma-artists-film
*New programme: subject to validation

See pages 74-75 for details of our Curating programmes

Research programmes

MPhil & PhD in Art
www.gold.ac.uk/pg/mphil-phd-art

You can check programme pages on our website for entry requirements; see pages 114-115 for more information

ARTS ADMINISTRATION & CULTURAL POLICY

Engage with the key issues in the formulation of arts and cultural policy, and the administration of the arts.

Student insight

“I’m turning 40 this year, returning to university study after having worked in various areas of music and performing arts management. I had reached a stage in the development of my business where I felt the need to acquaint myself with the current scholarship on cultural policy, to ground my endeavours on a solid theoretical foundation. As an American arts entrepreneur in Asia, the international dimension is of particular interest, so Goldsmiths’ unique MA in Cultural Policy, Relations and Diplomacy stood out as a particularly apt choice. So far, it has exceeded my already high expectations. The open and experimental academic culture at Goldsmiths has allowed me to bring my recent experience and practice in the field directly to bear in my academic work, making the transition back to university feel like a natural continuation of my career.”

Ray, MA in Cultural Policy, Relations & Diplomacy



Why study the MA in Arts Administration & Cultural Policy at Goldsmiths?

You’ll be taught by experienced staff from the Institute for Creative and Cultural Entrepreneurship (ICCE; see pages 84-85), and also practitioners from many companies, venues and national organisations, providing a direct link with the cultural professions.

You’ll have the opportunity to undertake a placement with an arts organisation, where you’ll be able to develop essential practical skills to enhance your employability as a cultural manager.

Learn about cultural policy and practice including audience development, fundraising, cultural regeneration, copyright, and business planning for the arts, and develop a critical approach to management practice and skills.

You can take a range of specialist courses including Entrepreneurial Modelling; Interpretation, Education and Communication in the Art Museum; Cultural Tourism and Regeneration; Enterprising Leadership; Disability Theatre; Sociocultural Analysis of the Musical; and Music Management.

You’ll also have the opportunity to create an international network of colleagues, to develop your future career.



Key fact

It’s possible to follow a ‘Music Pathway’ through the MA in Arts Administration and Cultural Policy, enabling you to broaden your musical knowledge and skills (see page 93)



Key fact

Our alumni are working in the UK and across the world in senior positions in arts and culture, in major venues and organisations, and for governments. Find out more at www.gold.ac.uk/icce/alumni-profiles



Why study the MA in Cultural Policy, Relations & Diplomacy at Goldsmiths?

You will have a unique perspective into this trans-disciplinary field of cultural policy, international cultural relations, and cultural and public diplomacy. You’ll also be able to tailor the programme by using the coursework to reflect on your interests and by choosing an option module from a range available across Goldsmiths.

Goldsmiths’ location in London provides the unique experience of being based in a multicultural world city with access to organisations at the forefront of our field, including, for example, the British Council, Visiting Arts, EUNIC London Hub, and Demos.

ICCE is also a member of ENCATC, the leading European network on cultural management and cultural policy education (www.encatc.org).

Many of ICCE’s students come from overseas, and this makes peer-to-peer learning a particularly valuable element of the study environment: students provide a personal perspective on the cultural policy, relations and diplomacy of their respective countries, and form the basis of an international network of contacts.

Why study the MA in Tourism & Cultural Policy at Goldsmiths?

You will learn about cultural policy and tourism in connection to a wide range of issues such as regeneration and development, cultural diversity, heritage and the arts, and place branding.

Studying the role of culture in tourism in the setting provided by London is a unique opportunity, as it provides accessible examples of culture-led regeneration (eg Bankside and the South Bank, Greenwich or Kings Cross) and event-led regeneration (2012 Olympic and Paralympic Games, and numerous festivals and city initiatives).

ICCE’s links with an extensive network of organisations, policy advisers and cultural practitioners mean that you’ll have access to exceptional research and study resources. These may potentially include, for example, Creative England, Tourism Concern and VisitBritain.



Find out more
www.gold.ac.uk/icce

Taught programmes

MA in Arts Administration & Cultural Policy
www.gold.ac.uk/pg/ma-arts-admin-cultural-policy

MA in Cultural Policy, Relations & Diplomacy
www.gold.ac.uk/pg/ma-cultural-policy-relations

MA in Tourism & Cultural Policy
www.gold.ac.uk/pg/ma-tourism-cultural-policy

Research programmes

MPhil & PhD in the Institute for Creative & Cultural Entrepreneurship
www.gold.ac.uk/pg/mphil-phd-creative-cultural-entrepreneurship

You can check programme pages on our website for entry requirements; see pages 114-115 for more information

COMMUNITY STUDIES

We carry out innovative research and practice, and we offer professionally qualifying and creative postgraduate opportunities in youth work, community development and community arts.

Graduate insight

“Studying at Masters level gave me the opportunity to network with a wide and diverse range of people, who all shared a common passion for youth and community work. The course literally changed my life! Less than a month after graduating from the MA I was offered my dream job - a full-time professional youth and community worker position within a large integrated county youth service.”

Ryan Karter (MA in Applied Anthropology & Community & Youth Work, 2012), Professional Youth and Community Worker for Essex Youth Service



Why study community studies at Goldsmiths?

Our multicultural and interdisciplinary learning and research environment encourages mutual respect and understanding, and values every student's individual contribution.

You'll be taught by staff who are engaged with research and consultancy work related to contemporary social issues, public service, youth democracy, and arts and engagement. This means that what you learn will be informed by current practice.

You'll develop a theoretical understanding of the subject alongside key practical skills and self reflection.

Our former students have gone on to work in the UK and abroad, setting up arts and community development projects, managing youth services, becoming community artists and musicians, establishing their own consultancies and working in a range of voluntary sector and local authority settings, and in formal and non-formal learning contexts. Some have established themselves in teaching or research.



Key fact

We work closely with community projects, arts organisations, social enterprises and youth work agencies



Find out more

www.gold.ac.uk/stacs or watch our departmental film at vimeo.com/goldsmiths/communitystudies


What underpins community studies at Goldsmiths is creativity, and a belief in the value of arts and music as part of a range of tools to effect positive change for individuals and communities.

Successful completion of the MA in Applied Anthropology and Community and Youth Work results in a qualification that is fully endorsed by the National Youth Agency and the Joint Negotiating Committee for Youth and Community Workers.

We offer MPhil/PhD opportunities for applicants with research interests in community and youth work. In addition we have a particular research specialism in faith-based social action, religion and society (find out more at www.gold.ac.uk/faithsunit).

These programmes are offered by the Department of Social, Therapeutic and Community Studies. Find out more about the department, and staff and their research interests, at www.gold.ac.uk/stacs/staff

Taught programmes

MA in Applied Anthropology & Community Arts 
www.gold.ac.uk/pg/ma-applied-anthropology-community-arts

MA in Applied Anthropology & Community & Youth Work (with Professional Validation) 
www.gold.ac.uk/pg/ma-applied-anthropology-community-youth-work

MA in Applied Anthropology & Community Development 
www.gold.ac.uk/pg/ma-applied-anthropology-community-development



Research programmes

MPhil & PhD in Community & Youth Work
www.gold.ac.uk/pg/mphil-phd-community-youth-work

MPhil & PhD in Religious Studies
www.gold.ac.uk/pg/mphil-phd-religious-studies

You can check programme pages on our website for entry requirements; see pages 114-115 for more information

COMPUTING

At Goldsmiths we're offering our own particular brand of computing. From developing computer systems that compose music and paint pictures, to defining and implementing new social media tools and applications, computing here is creative and innovative. We aim to invigorate the subject and the world around it.

Student insight

"I have enjoyed my time at Goldsmiths studying for the PhD. My supervisor has been brilliant, and I have benefited greatly from his broad knowledge. It was difficult at first to find a subject to focus on for my thesis but eventually the topic came about naturally during my early research into various areas in software protection. The best thing about Goldsmiths is the people - I have met many great people and have been taught by many talented lecturers."

James, PhD in Computer Science



Why study computing at Goldsmiths?

A postgraduate degree in computing prepares you for a future in universities or industry. You'll gain an understanding of existing commercial practices while developing a wide appreciation of the discipline, meaning that your knowledge can adapt and evolve to changes and challenges in the industry.

We have a distinctive approach to teaching - we aim to develop your creative skills as well as your technical skills. We have an expert team of friendly, supportive staff who are working at the frontiers of digital practice and research.

Many of our students undertake an internship with a globally recognised company. We've recently offered placements at Sony Computer Entertainment, Intel, Rackspace, BT, and the Wall Street Journal, and at start-up companies in London's technology industries.

We've attracted over £15 million of research funding in recent years, and we've collaborated with institutions of similar international expertise including Tate, MIT, Cambridge University, IRCAM, BT, Sony, and the BBC.

We have a terrific range of guest speakers from industry: from key players from the biggest computing and technology organisations in London through to start-ups and charities.

Our graduates have been extremely successful in securing jobs in their field within just a few months of graduation. They've taken up roles at Sony SCEE, Geomerics, IdeaWorks, Bossa Studios, Telegraph Media Group, Time Out, Unit9, and Uniblue Systems.



Key fact

Most of our research and computing staff also have an arts or industry practice



Find out more

www.gold.ac.uk/computing or watch our departmental film at vimeo.com/goldsmiths/computing

We have excellent lab and studio spaces for postgraduate students, including the Goldsmiths Digital Studios, a hub of radical experimentation with the aim of forging links between digital technologies and artistic practice.

You can study on joint degree programmes with the world-leading Department of Media and Communications, and the Institute for Creative and Cultural Entrepreneurship.

You'll have the opportunity to carry out research in a department that's creatively applying computing to art, music, design, and the wider environment.

Visit www.doc.gold.ac.uk/blog for programme films, student profiles and showreels of student work.

Taught programmes

MA in Computational Arts □

www.gold.ac.uk/pg/ma-computational-arts

MFA in Computational Arts □

www.gold.ac.uk/pg/mfa-computational-arts

MA in Computer Games Art & Design

www.gold.ac.uk/pg/ma-computer-games-art-design

MSc in Computer Games & Entertainment △

www.gold.ac.uk/pg/msc-computer-games-entertainment

MA in Creative & Cultural Entrepreneurship: Computing Pathway

www.gold.ac.uk/pg/ma-creative-cultural-entrepreneurship-comp

MSc in Data Science

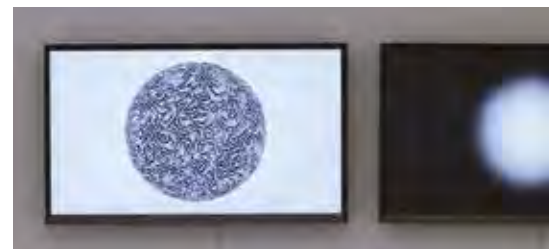
www.gold.ac.uk/pg/msc-data-science

MA/MSc in Digital Journalism

www.gold.ac.uk/pg/ma-digital-journalism

MA in Independent Games & Playable Experience Design*

www.gold.ac.uk/pg/ma-independent-games-design



Research programmes

MRes in Digital Journalism*

www.gold.ac.uk/pg/mres-digital-journalism

MPhil & PhD in Arts & Computational Technology

www.gold.ac.uk/pg/mphil-phd-arts-computational-tech

MPhil & PhD in Computer Science

www.gold.ac.uk/pg/mphil-phd-computer-science

MPhil & PhD in Intelligent Games & Game Intelligence

www.gold.ac.uk/pg/mphil-phd-intelligent-games

You can check programme pages on our website for entry requirements; see pages 114-115 for more information

*New programme: subject to validation

CULTURAL STUDIES

We are the largest centre for cultural studies in the UK, and are widely respected for delivering and carrying out world-leading teaching and research in the field.

Student insight

“Long before attending Goldsmiths I had the intuition this was the right university for my graduate studies. ‘You can either make money or history. We, here, will try to convince you to make history.’ These were the words of Professor Matthew Fuller during our induction week, which I will eternally keep in my heart and which instantly erased any doubts I may have had at that time. Coming from a visual and applied arts background I was looking for a Masters that would combine theoretical expertise with the possibility of hands-on projects. Both the tutors in the Centre of Cultural Studies and all the open lectures from visiting scholars I had the chance to follow not only assisted me in comprehending the politics and methods of contemporary creativity, and look beyond our given facts, but also understand my potential and desire for further study.”

Zeta, MA in Culture Industry



Why study cultural studies at Goldsmiths?

You'll be taught by the people who write influential and politically engaged texts in cultural theory - the pioneers in their fields.

You'll be able to take part in practice interventions in new media, technology and the arts in London's cityscape.

Our students are active in a critical and political engagement with today's changing global order.

Our teaching programmes incorporate laboratory projects, exhibitions, performance and activism.

You may be able to undertake a placement with a cultural organisation in London or overseas.

Find out more about our staff and their research interests at www.gold.ac.uk/cultural-studies/staff



Key fact

Our graduates are now working as cultural programme managers, media practitioners, researchers, journalists, founders of companies and enterprises, and academics and research fellows



Find out more

www.gold.ac.uk/cultural-studies or watch our departmental film at vimeo.com/goldsmiths/ccs



Taught programmes

MA in Cultural Studies
www.gold.ac.uk/pg/ma-cultural-studies

MA in Culture Industry
www.gold.ac.uk/pg/ma-culture-industry

MA in Digital Culture
www.gold.ac.uk/pg/ma-digital-culture

MA in Postcolonial Culture & Global Policy
www.gold.ac.uk/pg/ma-postcolonial-culture-global-policy

Research programmes

MPhil & PhD in Cultural Studies
www.gold.ac.uk/pg/mphil-phd-cultural-studies

You can check programme pages on our website for entry requirements; see pages 114-115 for more information

CURATING

Develop professional and academic excellence in the field of contemporary curatorial practice by joining a postgraduate programme in the Department of Art at Goldsmiths.

Graduate insight

“Studying at Goldsmiths was an incredibly intense and valuable experience, and I learnt a huge amount. I often say that the great thing about Goldsmiths is that they treat you as a professional (and not as a student) from the outset. My abiding memory of my time there was sitting in rooms with very intelligent and ambitious people. The support from the tutors was invaluable and helped me to independently develop a nationally touring exhibition with full funding in my final year. I owe a huge amount to Goldsmiths.”

George Vasey (MFA in Curating, 2013),
Curator at the Northern Gallery for
Contemporary Art in Sunderland



Why study curating at Goldsmiths?

We have a worldwide reputation for excellence in art education. A high proportion of our graduates have gone on to become leading curators in Britain and the wider world. We count among our alumni some of the most influential curators working in contemporary art today.

The department is actively engaged with London's dynamic and world-leading professional art scene. We work with a network of highly accomplished artists, curators, galleries and museums in London (and internationally) to create an inspiring environment in which you can study and develop your curatorial practice.

At Goldsmiths you'll be working alongside some of the most creative and ambitious art students in the world, creating opportunities for collaborations, to build professional networks, and to engage directly with the very best of your generation.

We have an international reputation for creativity and innovation, and we're one of the top fine art research departments in the country. Our location, within easy reach of central London, provides the opportunity to make the best possible use of the capital's resources, including a diverse range of exhibitions and events.

We provide space for art studios, performance work, installations, temporary projects and exhibitions.

Recent employers of our MFA Curating students and graduates include Tate Modern, the Guggenheim Museum, Venice Biennale, White Cube Gallery, Portikus and Kunst-Werke.

Find out more about our staff and their research interests at www.gold.ac.uk/art/staff



Key fact

11th in the world for art
(QS World University
Rankings by Subject 2016)



Find out more

www.gold.ac.uk/curating or visit
www.gold.ac.uk/art/exhibitions for details
of our annual shows



Taught programmes

MFA in Curating 
www.gold.ac.uk/pg/mfa-curating

See pages 64-65 for details of our Art programmes

Research programmes

MPhil & PhD in Curating
www.gold.ac.uk/pg/mphil-phd-curating

You can check programme pages on our website for entry requirements; see pages 114-115 for more information

DESIGN

Join a design department that for two years running has been voted the UK's best, and that continuously pushes the boundaries of the discipline.

Student insight

"Goldsmiths is different. Instead of teaching fashion students how to sew seams neatly you're challenged to think deeper and wider, to understand the bigger picture and what really matters. Goldsmiths pushed me through the surface of fashion to the more meaningful side. As the programme evolved, my tutors pushed me further and further out of my comfort zone. Although this created uncertainties at times, through this my work became more interesting, exciting, and innovative."

Jane, MA student



Why study design at Goldsmiths?

You'll be encouraged to develop a practice that radically examines the complex problems facing today's world: unshackled from traditional specialisms, technical constraints and entrenched methods, you'll be pushed to develop your own unique post-disciplinary practice that moves into new areas of social, political and economic life.

We have an international reputation for excellence in delivering design education, and we're using our extensive experience to develop a single Masters programme with pathways that represent our research/studio areas:

- Interaction & Technology
- Fashion & Society
- Innovation & Service
- Cities & Urbanism
- Participation & Politics
- Communication & Experience

You will have dedicated studio space, and can use industry-standard workshops and computing labs, supported by a team of expert tutor-practitioners.

You are taught by leading researchers, practitioners and visiting speakers, and our programmes focus on project-based learning.

We are renowned for pushing the boundaries of design. Our graduates don't just feed the industry - they shape and lead it. And our programmes have very high employability rates because of our strong reputation and industry links.

Our approach is critical, creative and cutting-edge, and we welcome students with a wide range of qualifications, interests and practices, including those with non-design backgrounds.

Find out more about our ethos and activities at www.goldsmithsdesignblog.com



Key facts

We are 1st in the UK for design (The Guardian University Guide league tables 2017)

We are ranked 11th in the world for the subject (QS World University Rankings by Subject 2016)

We are also one of the top graduate universities in the UK for designers (LinkedIn 2015)



Find out more

www.gold.ac.uk/design or watch our departmental film at vimeo.com/goldsmiths/design



Taught programmes

We're planning on developing a single Masters programme with pathways that represent our research/studio areas; please check www.gold.ac.uk/design for the latest news

Research programmes

MRes in Design
www.gold.ac.uk/pg/mres-design

MPhil & PhD in Design
www.gold.ac.uk/pg/mphil-phd-design

You can check programme pages on our website for entry requirements; see pages 114-115 for more information

EDUCATION: HIGHER DEGREES & INITIAL TEACHER EDUCATION

The preparation of teachers is central to the early history of Goldsmiths, and the Department of Educational Studies proudly continues this tradition. However, 'education' is about so much more than becoming a teacher, and our programmes reflect this wider view of the discipline.

Graduate insight

"The degree enabled me to underpin my practice with theory and reshaped the potential of what my practice could be. Originating from a design background, I had fixed ideas about the type of work that I would create. This course shattered those concepts and gave me the freedom and confidence to construct new ideas outside of my skill base. This has enlightened my ability to educate and create. The lecturers taught us countless ways in which art can be used to change what happens inside your classroom and outside in the community."

Natalie Ashman (MA in Artist Teachers & Contemporary Practices, 2013), Head of Art and Design in a London Sixth Form College, and a freelance illustrator/designer



Why study education at Goldsmiths?

We see education as a window through which to view the world, and as something with the power to define who we are and how we live. We have an excellent reputation for energy and creativity, and we're committed to social justice and inclusion - these qualities permeate our postgraduate programmes.

We have a strong pedigree in teaching practice - we've been training teachers since 1904 - and have gained recognition from Ofsted for our 'outstanding contribution' to widening participation in Initial Teacher Education. As a student here you can start or continue your studies into primary and secondary teaching, including PGCE through a range of routes.

We're a friendly department, and you'll receive individual attention and support for your studies.

Our MA programmes are distinguished by their emphasis on the interplay between culture, language, identity and creativity.

You'll learn from academics who are leading the field and researching areas including social justice and identity, language and multilingualism, and the arts and learning.

Find out more about our staff and their research interests at www.gold.ac.uk/educational-studies/staff



Key fact

Education: 8th in the UK for the quality of our research**



Find out more

www.gold.ac.uk/education or watch our departmental film at vimeo.com/goldsmiths/education



Taught programmes

MA in Artist Teachers & Contemporary Practices
www.gold.ac.uk/pg/ma-artist-teachers-contemporary-practices

MA in Children's Literature
www.gold.ac.uk/pg/ma-childrens-literature

MA in Children's Literature: Children's Illustration*
www.gold.ac.uk/pg/ma-childrens-literature-illustration
 *New programme: subject to validation

MA in Education: Culture, Language & Identity
www.gold.ac.uk/pg/ma-education-culture-language-identity

MA in Education: School-Based Explorations
www.gold.ac.uk/pg/ma-education-school-based-explorations

MA in Multilingualism, Linguistics & Education
www.gold.ac.uk/pg/ma-multilingualism-linguistics-education

MA Writer/Teacher
www.gold.ac.uk/pg/ma-writer-teacher

Initial Teacher Education (ITE) programmes

PGCE (Primary)
www.gold.ac.uk/pgce/primary

PGCE (Primary with Mathematics)
www.gold.ac.uk/pgce/primary-maths

PGCE (Secondary) Standard Programme: Art & Design; Biology; Chemistry; Design & Technology; Drama; English; Mathematics; Media Studies with English; Modern Languages; Physics
www.gold.ac.uk/pgce/secondary

PGCE (Secondary) Part-Time Programme: Design & Technology; English; Science (Biology, Chemistry, Physics)
www.gold.ac.uk/pgce/secondary-flexible

You can check programme pages on our website for entry requirements; see pages 114-115 for more information. For all PGCE programmes, offers will be made subject to applicants meeting 'fitness to train' conditions including a health questionnaire and DBS check. Find out more at www.gold.ac.uk/fitness-to-train



ENGLISH & COMPARATIVE LITERATURE

At Goldsmiths, English and comparative literature is critical and creative. From classical literature and linguistics, to creative writing and contemporary fiction, our thriving research environment unites traditional strengths with innovation, covering a wide range of interests in language and literature from the 1300s to the present day.

Student insight

“The ECL Department at Goldsmiths seems to me distinctive in its ability to combine an academic rigorousness with a profound sense of creative autonomy. Individuals on the MA come to the programme with their own intellectual interests developed from a variety of academic backgrounds. I found that this variation combined with small tutorial sizes allows for lively discussion within the seminars, but also creates a real sense of community based around shared interests outside of the classroom.”

Holly, MA in Comparative Literary Studies



Why study English and comparative literature at Goldsmiths?

Our staff come from a variety of cultural backgrounds - and, with their diverse research specialities, they're well-placed to help you develop your own interests whether they lie in American, Arabic, British, Caribbean, Irish, French, Spanish, German or postcolonial literatures.

You'll be able to stay in touch with current debates in literature through our dedicated Writers' Centre, which has been established to encourage new writing, hosts literary readings and discussions, and has launched a Goldsmiths Prize of £10,000 that rewards innovative fiction.

London offers you an excellent range of research facilities in literary, linguistic and cultural studies. We work closely with the University of London's prestigious School of Advanced Study and its specialist institutes for English Studies, Germanic and Romance Studies, and the Study of the Americas.

As a postgraduate you can apply for a reader's pass to the British Library, which houses the Official Publications Library as well as specialist collections.

Our popular speaker series has featured guests including Doris Lessing, Harold Pinter, Alan Bennett, Ian McEwan and Sharon Olds.

Graduates of our MA in Creative and Life Writing have gone on to have successful careers as writers and playwrights, and have won awards including the Guardian First Book Award, The Sunday Times Young Writer of the Year Award and the European Union Prize for Literature.

The MA in Multilingualism, Linguistics and Education offers critical engagement with theory, policy and practice.

Our MA in Sociocultural Linguistics enables you to investigate the relationship between language, culture and society, and provides you with a solid understanding of English language and linguistics.

The MA in Comparative Literary Studies enables you to study literature from a variety of perspectives, combining theoretical angles with the close reading of a wide range of texts, from different media, periods, and backgrounds.

Find out more about our staff and their research interests at www.gold.ac.uk/ecl/staff

Taught programmes

MA in Black British Writing
www.gold.ac.uk/pg/ma-black-british-writing

MA in Children's Literature
www.gold.ac.uk/pg/ma-childrens-literature

MA in Comparative Literary Studies (with pathways in: American Literature & Culture; Comparative Literature & Criticism; Literature of the Caribbean & its Diasporas; Modern Literary Theory; Modern Literature; Romantic & Victorian Literature & Culture; Shakespeare: Early & Modern)
www.gold.ac.uk/pg/ma-comparative-literary-studies

MA in Creative & Life Writing
www.gold.ac.uk/pg/ma-creative-life-writing

MA in Multilingualism, Linguistics & Education
www.gold.ac.uk/pg/ma-multilingualism-linguistics-education

MA in Sociocultural Linguistics
www.gold.ac.uk/pg/ma-sociocultural-linguistics

MA in Translation
www.gold.ac.uk/pg/ma-translation

MA Writer/Teacher
www.gold.ac.uk/pg/ma-writer-teacher



Key fact
English: 18th in the UK for the quality of our research** and ranked in the world's elite in the QS World University Rankings by Subject 2016



Find out more
www.gold.ac.uk/ecl or watch our departmental film at vimeo.com/goldsmiths/english



Research programmes

MRes in English
www.gold.ac.uk/pg/mres-english

MPhil & PhD in Creative Writing
www.gold.ac.uk/pg/mphil-phd-creative-writing

MPhil & PhD in English, Comparative Literature or Linguistics
www.gold.ac.uk/pg/mphil-phd-english-comparative-literature

HISTORY

History at Goldsmiths is interdisciplinary, comparative and research-led. Our staff are internationally recognised, award-winning experts in their fields, specialising in the history of Africa, Asia and Europe, with particular strengths concentrated around three research clusters: history of medicine, emotions and the body; military history; and history of the Balkans/Russia/East-Central Europe.

Student insight

"I have found myself surrounded by practising historians in a vibrant research culture. I regularly meet my supervisor, but also share thoughts and ideas with other academics in the department, who are always happy to bounce ideas around and offer their suggestions."

John, PhD in History



Why study history at Goldsmiths?

We're a small, friendly and ambitious department with student-focused, enthusiastic staff who help you achieve your full potential and follow your own historical interests.

Research and teaching encompass Asia, Africa, Britain, Western and Eastern Europe, with a distinctive focus on the interplay of religious, political, intellectual and cultural differences across time and place.

Masters students can take modules in other departments and at other University of London institutions, providing a very broad choice of study options.

You'll be eligible for free membership of the Institute of Historical Research, offering an excellent library and nearly 70 regular research seminars, several convened by department staff.

You will be part of a dynamic postgraduate community researching diverse topics that range from 19th-century freak shows to the visual history of the Atatürk cult to contemporary Irish identity.

The department hosts two research centres: the Centre for the Study of the Balkans and the Centre of the Body (co-hosted with Theatre and Performance; see pages 102-103).

The Research Excellence Framework 2014 rated 73% of the department's submission as world-leading or internationally excellent.

Our graduates have gone on to pursue careers in media, local government, journalism, museums, charities, the arts and academia.

Find out more about our staff and their research interests at www.gold.ac.uk/history/staff



Key fact

History: 4th in London and 11th in the UK for the quality of our research**



Find out more

www.gold.ac.uk/history or watch our departmental film at vimeo.com/goldsmiths/history

Taught programmes

MA in History
www.gold.ac.uk/pg/ma-history

MA in Queer History*
www.gold.ac.uk/pg/ma-queer-history
*New programme: subject to validation

Research programmes

MRes in History
www.gold.ac.uk/pg/mres-history

MPhil & PhD in History
www.gold.ac.uk/pg/mphil-phd-history

You can check programme pages on our website for entry requirements; see pages 114-115 for more information



INSTITUTE FOR CREATIVE & CULTURAL ENTREPRENEURSHIP

Develop your creative potential and understanding of entrepreneurship and its relevance to the cultural and creative industries. You'll be able to transform your creative ideas into sustainable enterprises that can have a social and aesthetic return while developing a strong critical understanding of notions of creative entrepreneurship.

Student insight

"The Masters offers business modelling techniques to a wide array of creative practices, such as music, media, theatre, design, fashion and more. So whether you're a musician, a performer, a filmmaker, a designer or just an amateur artist looking to develop your skills, there is something for you. The good thing about my Goldsmiths experience is the diversity of cultures and backgrounds of the people in my class. It's amazing how I can share my ideas and get feedback from different corners of the world. It really opens doors to endless networking opportunities."

Samah, MA in Creative & Cultural Entrepreneurship



Why study creative and cultural entrepreneurship at Goldsmiths?

We integrate entrepreneurship within the development of creative practices, and encourage you to take a 'creative' approach to the generation of new businesses and the infrastructure that supports them.

Our alumni are working in the UK and worldwide in senior positions in arts and culture, in major venues and organisations, and for governments.

Our programmes are interdisciplinary, working across many departments and subject areas including Design, Fashion, Computing, Music, Media and Communications, and Theatre and Performance.

We engage directly with a wide range of creative and cultural organisations, and use work placements as part of our programmes - so you'll gain invaluable experience.

You'll be studying in London, one of the leading cities in the world, where creative and cultural industries play a major part in the economy.

We welcome MPhil/PhD proposals from people interested in undertaking research into entrepreneurship, social entrepreneurship, tourism, cultural relations and diplomacy, and cultural policy.



Key fact

Our graduates do a wide range of amazing things. Find out more at www.gold.ac.uk/icce/alumni-profiles



Find out more

www.gold.ac.uk/icce



Why study social entrepreneurship at Goldsmiths?

You'll be taught by experienced staff from the Institute for Creative and Cultural Entrepreneurship and a wide range of guest lecturers, including practitioners from many leading social enterprises, and academic and policy experts.

Learn about and critically reflect upon the policies, frameworks, regulatory environments and new funding and revenue models that support social enterprise, social innovation and the social economy.

London and the UK are globally leading locations in terms of the variety of activities and support organisations focused upon social enterprise.

You will be introduced to techniques of entrepreneurial modelling and the evaluation of social return on investment, and will be given the opportunity to undertake practical exercises to test the theoretical approaches to which you have been introduced.

See pages 66-67 for details of our arts administration and cultural policy MA programmes.

Find out more about our staff and their research interests at www.gold.ac.uk/icce/staff

Taught programmes

PGCert in Museums & Galleries Entrepreneurship
www.gold.ac.uk/pg/pgcert-museums-galleries-entrepreneurship

MA in Arts Administration & Cultural Policy
www.gold.ac.uk/pg/ma-arts-admin-cultural-policy

MA in Creative & Cultural Entrepreneurship 
www.gold.ac.uk/pg/ma-creative-cultural-entrepreneurship

MA in Cultural Policy, Relations & Diplomacy
www.gold.ac.uk/pg/ma-cultural-policy-relations

MA in Events & Experience Management*
www.gold.ac.uk/pg/ma-events-experience-management

MA in Luxury Brand Management*
www.gold.ac.uk/pg/ma-luxury-brand-management

MA in Social Entrepreneurship
www.gold.ac.uk/pg/ma-social-entrepreneurship

MA in Tourism & Cultural Policy
www.gold.ac.uk/pg/ma-tourism-cultural-policy

Research programmes

MPhil & PhD in the Institute for Creative & Cultural Entrepreneurship
www.gold.ac.uk/pg/mphil-phd-creative-cultural-entrepreneurship

You can check programme pages on our website for entry requirements; see pages 114-115 for more information

*New programme: subject to validation

JOURNALISM

Develop the practical skills and experience you'll need to work as a journalist at the highest level.

Graduate insight

"My job is about finding ways to use data, code and multimedia to enrich and improve storytelling across the newsroom. The Digital Journalism programme combines traditional news and feature writing with modern digital techniques, including video production, data visualisation and coding: skills now most in demand in the industry. I also spent several weeks working on EastLondonLines, the local news website, including running the 2015 General Election coverage. This allowed me to practise my news writing and editing skills as well as use data to analyse the local results. I was attracted to the programme because it is run with the Department of Computing, so I knew the technical side would be grounded in real computer science. This is not a journalism programme with a bit of techie stuff just bolted on! A great strength of the Masters is the lecturers' knowledge of the industry and understanding of the importance of networking. I was encouraged to attend events and pursue internship opportunities that opened a lot of doors for me."

David Blood (MSc Digital Journalism, 2015),
Interactive Data Journalist at Financial Times



Why study journalism at Goldsmiths?

You'll be working as a journalist from the moment you arrive. You'll work on EastLondonLines.co.uk, our local multimedia news website, which will provide excellent training in news gathering and reporting stories using words, images, and an array of digital tools.

Our programmes blend intensive workshop-based training in key practical skills such as news writing, video reporting, data and broadcast skills with lectures in subjects like media law and research techniques. And we aim to create critically aware, thinking journalists, who see their work in a wider social context.

You'll be taught by journalists with experience at the highest levels of the industry in our state-of-the-art newsrooms, radio and television studios, and editing suites. So you'll be learning the latest techniques, and receiving training that's relevant to today's workplaces.

You'll graduate with the practical multimedia experience and industry contacts to prepare you for a successful career in journalism, whatever your preferred platform. Our alumni have gone on to work at major broadcasters such as the BBC and Bloomberg TV, on publications like the Guardian newspaper and Elle magazine, and at the cutting edge of digital content at Twitter and Vice.

The department is a focus for debate and discussion about journalism and the wider media, and we have many guest speakers and networking events throughout the year.

Find out more about our staff and their research interests at www.gold.ac.uk/media-communications/staff



Key fact

Our MAs in Journalism, Radio and Television Journalism are industry accredited, so you can be sure that they're well respected by employers



Find out more

www.gold.ac.uk/media-communications or watch our programme films on the web pages listed in the table below



Media practice programmes

MA in Journalism
www.gold.ac.uk/pg/ma-journalism

MA in Radio
www.gold.ac.uk/pg/ma-radio

MA in Television Journalism
www.gold.ac.uk/pg/ma-tv-journalism

MA/MSc in Digital Journalism
www.gold.ac.uk/pg/ma-digital-journalism

You can check programme pages on our website for entry requirements; see pages 114-115 for more information

MANAGEMENT

Our programmes are designed to equip you with the knowledge, skills and strategies you need to lead, innovate and bring out the best in people. They will empower you to grow and thrive in any profession, in any role, and at any stage of your career.

Student insight

“I chose to study at Goldsmiths as I felt it would be an exciting and dynamic place to study Occupational Psychology. I like how the department combines innovation and entrepreneurial aspects of business with the core skills and knowledge required. Prior to starting I worked for 10 years in management consulting and so I was looking for a course that would give me a competitive edge in the job market. Goldsmiths has an excellent reputation, and as the programme is BPS [British Psychological Society] accredited I will be able to gain chartered status in the future. I have found the course to be both challenging and hugely enjoyable. I have met some great people with very diverse backgrounds.”

Rachael, MSc in Occupational Psychology



Why study management at Goldsmiths?

Our programmes are firmly rooted in cutting-edge theory, research and practice, ensuring that the leadership skills you develop are always underpinned by expert knowledge and an evidence-based approach.

We have strong cross-sector industry links and leading academics in subjects ranging from work psychology to marketing and economics.

Our programmes enable you to develop core skills in leadership, project management, motivation, innovation, marketing, research design, and organisational behaviour and change.

It's the perfect setting to test your theories out in the real world - with a global financial centre easily accessible from campus, you can conduct research within an organisation you're learning about in lectures.

The programmes are taught by the Institute of Management Studies (IMS), a supportive place, giving you the skills to grow and thrive in any profession.

Benefit from our multi-million pound campus facilities, extensive resources, regular guest speakers and networking events, and access to additional University of London resources across the city.

Find out more about our staff and their research interests at www.gold.ac.uk/ims/staff

Right: Sir Paul Smith gives a guest lecture to students in the Institute of Management Studies



Key fact

We regularly invite guest speakers to the institute - recent names have included fashion designer Sir Paul Smith, 'city superwoman' Nicola Horlick, and Nik Kinley, Director and Head of Talent Strategy at YSC, a global firm of business psychologists



Find out more

www.gold.ac.uk/ims
or watch our departmental film at vimeo.com/goldsmiths/ims



Taught programmes

MSc in Consumer Behaviour
www.gold.ac.uk/pg/msc-consumer-behaviour

MSc in Management of Innovation
www.gold.ac.uk/pg/msc-management-innovation

MSc in Occupational Psychology
www.gold.ac.uk/pg/msc-occupational-psychology

Research programmes

MPhil & PhD in Management
www.gold.ac.uk/pg/mphil-phd-management

MPhil & PhD in Psychology (IMS)
www.gold.ac.uk/pg/mphil-phd-psychology-ims

You can check programme pages on our website for entry requirements; see pages 114-115 for more information

MEDIA & COMMUNICATIONS

Media and communications is ranked first in the UK for research intensity, and has the highest possible score for its research environment. You'll be taught by leading researchers and practitioners, with top-of-the-range facilities, by staff who celebrate creativity and have close links to the media industries.

Student insight

"I was working as a Director of PR in Pakistan before coming to Goldsmiths. After having been in work for some time, I wanted to refresh my knowledge by doing a degree in media at a British university. Having spoken to some alumni from Goldsmiths, I knew that the media department was the leading one, especially in London. And I also knew about the research contribution the faculty at Goldsmiths has made towards the field."

Khurram, MA in Media & Communications



Why study media and communications at Goldsmiths?

You'll integrate theory and practice, debating ideas with internationally renowned academics while being taught practice by industry professionals.

We're at the forefront of public debates on media reform and cultural futures.

You get to deliver news and views through EastLondonLines.co.uk and other cutting edge student-run media and events.

You'll be part of a department that recently launched a next-generation film school, with many options open to students across the department.

Our Masters students have access to industry-standard facilities - studios, editing suites, software and hardware - in the purpose-built Professor Stuart Hall Building.

Students and graduates regularly win prestigious national and international awards and prizes.

You'll share events from the Centre for Feminist Research, the Centre for Investigative Journalism, the Centre for Global Media Democracy, the Political Economy Research Centre and the Global Fashion Research Unit to name only a few.

We host talks and panels with international figures - recent guests have included Gurinder Chadha, Angela Davis and Nick Davis - plus weekly Media Forums with major figures in film and journalism.

Your specialist research will be supervised by critical, creative and radical researchers including eight female professors. Check their interests at www.gold.ac.uk/media-communications/staff



Key fact

Media & Communications: 1st in the UK for the quality of our research**, and ranked 27th in the world (QS World University Rankings by Subject 2016)



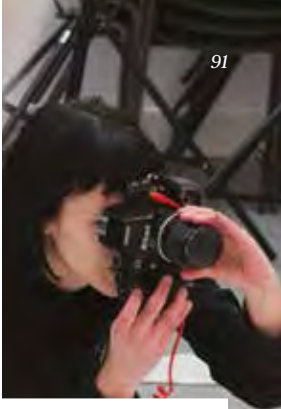
Key fact

We are one of the top graduate universities for media professionals (LinkedIn 2015)



Find out more

www.gold.ac.uk/media-communications or watch our departmental film at vimeo.com/goldsmiths/media



Media theory programmes

MA in Brands, Communication & Culture
www.gold.ac.uk/pg/ma-brands-communication-culture

MA in Children's Literature: Children's Illustration* □
www.gold.ac.uk/pg/ma-childrens-literature-illustration

MA in Creative & Cultural Entrepreneurship: Media & Communications Pathway
www.gold.ac.uk/pg/ma-creative-cultural-entrepreneurship-media

MA in Digital Media: Technology & Cultural Form
www.gold.ac.uk/pg/ma-digital-media-technology-cultural-form

MA in Film & Screen Studies
www.gold.ac.uk/pg/ma-film-screen-studies

MA in Gender, Media & Culture
www.gold.ac.uk/pg/ma-gender-media-culture

MA in Global Media & Transnational Communications
www.gold.ac.uk/pg/ma-global-media-transnational-communications

MA in Media & Communications
www.gold.ac.uk/pg/ma-media-communications

MA in Political Communications
www.gold.ac.uk/pg/ma-political-communications

MA in Promotional Media: Public Relations, Advertising & Marketing
www.gold.ac.uk/pg/ma-promotional-media

MA in Race, Media & Social Justice*
www.gold.ac.uk/pg/ma-race-media-social-justice

Research programmes

MRes in Media & Communications
www.gold.ac.uk/pg/mres-media-communications

MRes in Filmmaking, Photography & Electronic Arts △
www.gold.ac.uk/pg/mres-filmmaking-photography-electronic-arts

MPhil & PhD in Media & Communications
www.gold.ac.uk/pg/mphil-phd-media-communications

You can check programme pages on our website for entry requirements; see pages 114-115 for more information
*New programme: subject to validation

Media practice programmes

MA/MSc in Digital Journalism
www.gold.ac.uk/pg/ma-digital-journalism

MA in Filmmaking (with pathways in Cinematography, Editing, Directing Fiction, Producing, Screen Documentary, and Sound Recording & Design) △ □
www.gold.ac.uk/pg/ma-filmmaking

MA in Journalism △ □
www.gold.ac.uk/pg/ma-journalism

MA in Photography: The Image & Electronic Arts △ □
www.gold.ac.uk/pg/ma-photography-electronic-arts

MA in Radio △ □
www.gold.ac.uk/pg/ma-radio

MA in Script Writing △ □
www.gold.ac.uk/pg/ma-script-writing

MA in Television Journalism △ □
www.gold.ac.uk/pg/ma-tv-journalism

MUSIC

Studying with us will maximise your creative and academic potential, preparing you for the professional world.

Student insight

“One of my mentors at university mentioned his ties to the music faculty at Goldsmiths so I decided to research it. What I found was an exciting and comprehensive programme in one of the most culturally vibrant cities on earth. Getting to know the faculty and my peers has been an experience of deepening my perspective, both culturally and musically, leading to numerous musical opportunities as well as a complete paradigm shift in how I approach my discipline as a classical composer. I now run a weekly lecture series on contemporary music with my colleagues. A friend and I are starting to write music for a play to be premiered in Edinburgh later this year. A group of us do regular improvisation concerts around the city. Even as I continue to be amazed by it, Goldsmiths and London life have afforded me more life-changing experiences and relationships than I ever could have asked for.”

Micah, MMus in Composition



Why study music at Goldsmiths?

Staff in the department are internationally established composers, performers and scholars.

We uniquely offer teaching in classical and popular music, composition, musicology, sonic arts and ethnomusicology, letting you combine modules from these areas.

You'll be part of one of the largest postgraduate music communities in the UK, and will have the opportunity to connect with industry professionals, as well as leading international scholars.

Our programmes and pathways combine creativity with rigorous theoretical, historical and contextual studies.

Staff research is innovative, wide-ranging and interdisciplinary, providing the basis for teaching.

You'll have the opportunity across a diversity of music to realise your creative and scholarly vision.

The new Goldsmiths Music Studios complex is one of the UK's most advanced recording studios, and is linked to the in-house label, NX Records (www.gold.ac.uk/music/nxrecords).

The Stanley Glasser Electronic Music Studio, the UK's first research-led sonic studio, facilitates innovation in composition, production, installation and performance.

For performance and rehearsal, you can use the department's Steinway Model D in the impressive Council Chamber (within the Grade II-listed Deptford Town Hall Building), suites of practice rooms, and local performance venues.

The PureGold summer music festival showcases students in South London venues, reflecting the diversity of the department's creativity, from opera through to dubstep and sonic installations.

Throughout the year, you can participate in a host of performance opportunities, including the Goldsmiths Sinfonia, Chamber Choir, PureGold Opera, Creative Jazz Ensemble, Contemporary Music Ensemble, lunchtime and evening recitals, and live events at the Students' Union.

Our postgraduate music programmes help you develop vocational and transferable skills that employers look for.

Find out more about our staff and their research interests at www.gold.ac.uk/music/staff



Key fact

London is a cultural nexus; as a student here you'll be able to enjoy and participate in the city's thriving international music and arts scene



Find out more

www.gold.ac.uk/music or watch our departmental film at vimeo.com/goldsmiths/music

Taught programmes

MA in Music (Contemporary Music Studies; Ethnomusicology; Historical Musicology; Popular Music Research; General)
www.gold.ac.uk/music

MMus (Composition; Creative Practice; Performance; Popular Music; Sonic Arts)
www.gold.ac.uk/music

MMus in Screen Composition*
www.gold.ac.uk/pg/mmus-screen-composition
*New programme: subject to validation

MA in Arts Administration & Cultural Policy: Music Pathway
www.gold.ac.uk/pg/ma-arts-admin-cultural-policy-music-pathway

MA in Creative & Cultural Entrepreneurship: Music Pathway
www.gold.ac.uk/pg/ma-creative-cultural-entrepreneurship-music

You can check programme pages on our website for entry requirements; see pages 114-115 for more information



Research programmes

MPhil & PhD in Music (Research, Composition, Performance Practice, or Sonic Arts)
www.gold.ac.uk/pg/mphil-phd-music

POLITICS & INTERNATIONAL RELATIONS

Politics at Goldsmiths is distinctive - we extend beyond the conventional boundaries of the discipline to focus on the interactions between politics, culture and art in different parts of the world. Our programmes offer unique approaches to exploring the political world at a deeper level, as well as exciting career opportunities.

Graduate insight

“The MA in Art and Politics is a fantastic programme. I found it incredibly stimulating; I started to think in a different way about the relationship between art and politics. After graduation I worked as a Broadcast Journalist at the BBC World Service, delving back into my dissertation for a documentary I made for the BBC. Without this MA I wouldn't be where I am now. Well worth it!”

Anna Ceesay (MA in Art & Politics, 2010),
Director of Communications & PR at
The Jimmy Mizen Foundation



Why study politics at Goldsmiths?

We're interested in the conflicts and contradictions of 21st-century politics, in which the rise of Asia and Africa seem as inevitable as continued US dominance, and in which the continued extensions of human rights will be accompanied by both celebration and contestation. We see politics as an interpretive discipline and use it as a lens to view the world.

The department provides a lively, interdisciplinary environment for postgraduate study. Our political theorists, political economists and international relations scholars encourage you to question and traverse traditional understandings of political phenomena.

Combining our particular strengths in postcolonial theory, the political economy of neoliberalism and market institutions, and our area studies specialisms in China, the Middle East, the US, and Latin America, we offer you an exciting range of opportunities to explore the politics of the world you live in.

Staff in the department are world-recognised specialists and experts in their fields, and are enthusiastic about sharing their knowledge and initiating lively debate.

All of our staff are research active.

The MA in International Relations includes the option of a placement programme. We've recently arranged placements with Amnesty International, London Development Agency, the Red Cross and the Department of Health.

Find out more about our staff and their research interests at www.gold.ac.uk/politics/staff



Key fact

Our degree programmes can lead to exciting careers in politics, the media, international affairs and development, and the public and private sectors



Find out more

www.gold.ac.uk/politics-and-international-relations or watch our departmental film at vimeo.com/goldsmiths/politics



Taught programmes

MA in Art & Politics
www.gold.ac.uk/pg/ma-art-politics

MA in International Relations
www.gold.ac.uk/pg/ma-international-relations

MA in Politics, Development & the Global South*
www.gold.ac.uk/pg/ma-politics-development-global-south
*New programme: subject to validation

Research programmes

MPhil & PhD in Politics
www.gold.ac.uk/pg/mphil-phd-politics

You can check programme pages on our website for entry requirements; see pages 114-115 for more information

PSYCHOLOGY

Study in an internationally respected psychology department, benefiting from cutting-edge facilities including an EEG and brain stimulation laboratory and the Goldsmiths Infant Lab, and access to dedicated staff with diverse research and teaching strengths.

Student insight

“This MSc is a unique programme. A thorough quest led me to find out that Goldsmiths would provide me with the best atmosphere for integrating my interests in neuroscience, neuroaesthetics, music, arts and rehabilitation.

My classmates have been the best group of people I have had the pleasure of studying with: very committed, heartwarming and friendly. I know that Goldsmiths will provide me with the best environment to continue my pursuit into working with neurological patients and music rehabilitation. I am sure I will continue meeting more interesting people and continue to get involved in creative projects.”

Lily, MSc in Music, Mind & Brain



Why study psychology at Goldsmiths?

Our staff have expertise in a rich variety of areas, with particular research strengths in applied psychology (including forensic and clinical professions); brain and cognition (including neuroscience, and music, mind and brain); individual differences, psychopathology and social processes; plus typical and atypical development.

We're out in the world. From how sound sells brands to bullying in schools, we investigate and conduct research in a range of sectors and industries - from advertising agencies to brain injury units, and from airports to the BBC.

All of our programmes have a strong research focus, and all students become involved in original research. We also involve postgraduates in research developments in the department through internal seminars, workshops and conferences.

We have excellent research facilities, including laboratories for psychophysiological and cognitive research, dedicated observational suites, and computing, video and audio recording equipment for studio or field research. We also have a psychological test library. Excellent support is provided by a highly skilled and approachable technical and administrative team.

We have a thriving postgraduate community, with around 100 MSc and MPhil/PhD students and a strong representation of mature students and students from around the world.

We provide rigorous training in psychological research methods.

We have well-established research links with other academic institutions, and with a range of organisations such as hospitals, schools, charities and businesses.

We have a strong track record for attracting significant research income. Recent research projects have looked at improving police interviewing techniques, infants' perception and understanding of their limbs and bodies, and the perceptual abilities of remote Namibian animal herders.

You'll be able to keep on top of the latest developments in research and how psychology is applied to the real world through our regular departmental seminar series and the Whitehead Lecture Series.

We offer PhD training in all areas of research expertise in the department.

Find out more about our staff and their research interests at www.gold.ac.uk/psychology/staff



Key fact

Psychology: 3rd in the UK for the quality of our research**



Find out more

www.gold.ac.uk/psychology or watch our departmental film at vimeo.com/goldsmiths/psychology



Taught programmes

MSc in Cognitive & Clinical Neuroscience
www.gold.ac.uk/pg/msc-cognitive-clinical-neuroscience

MSc in Forensic Psychology
www.gold.ac.uk/pg/msc-forensic-psychology

MSc in Foundations in Clinical Psychology & Health Services
www.gold.ac.uk/pg/msc-clinical-psychology-health-services

MSc in Music, Mind & Brain
www.gold.ac.uk/pg/msc-music-mind-brain

MSc in the Psychology of Social Relations
www.gold.ac.uk/pg/msc-psychology-social-relations

MSc in Translational Behavioural Science*
www.gold.ac.uk/pg/msc-translational-behavioural-science
*New programme: subject to validation

Research programmes

MRes in Research Methods in Psychology
www.gold.ac.uk/pg/mres-research-methods-psychology

MPhil & PhD in Psychology
www.gold.ac.uk/pg/mphil-phd-psychology

You can check programme pages on our website for entry requirements; see pages 114-115 for more information

SOCIAL WORK

Social work education at Goldsmiths has a long and distinguished record - we are a major contributor to social work research, and our graduates have an excellent reputation among employers.

Student insight

“Several years ago I was sponsored by my employer to complete an MA. I chose Goldsmiths as it has a good academic reputation. I really valued the support and encouragement I received from the tutors. The course was interesting, challenging, demanding and thought-provoking. It stretched me, expanded my thinking and made me realise my capabilities, not just professionally but personally. Goldsmiths is organised, consistent and reliable, and treated us like professionals. This was so beneficial, especially as we were juggling full-time social work posts, families, the course and all of the other things life throws at us. Goldsmiths is such a great community to be part of.”

Nimal, MA in Advanced Social Work: Practice Education



Why study social work at Goldsmiths?

Goldsmiths is one of the leading universities for social work education in the UK.

Our taught programmes can equip you with the knowledge and skill base needed for social work practice. If you're already working - or intending to work - in a related area, they'll enable you to extend and develop your current competencies.

We'll equip you with the knowledge, values and skillset you need to practise as a reflective and ethical social worker.

We work with employer stakeholder partners to provide you with practice-learning opportunities that will deliver the skills you need in your career.

We offer MPhil/PhD supervision in child protection, learning disability, mental health, the interconnections between domestic violence and child abuse, explorations of gender and sexuality in social care, and community, faith and civil society.

These programmes are offered by the Department of Social, Therapeutic and Community Studies. Find out more about the department and our staff at www.gold.ac.uk/stacs



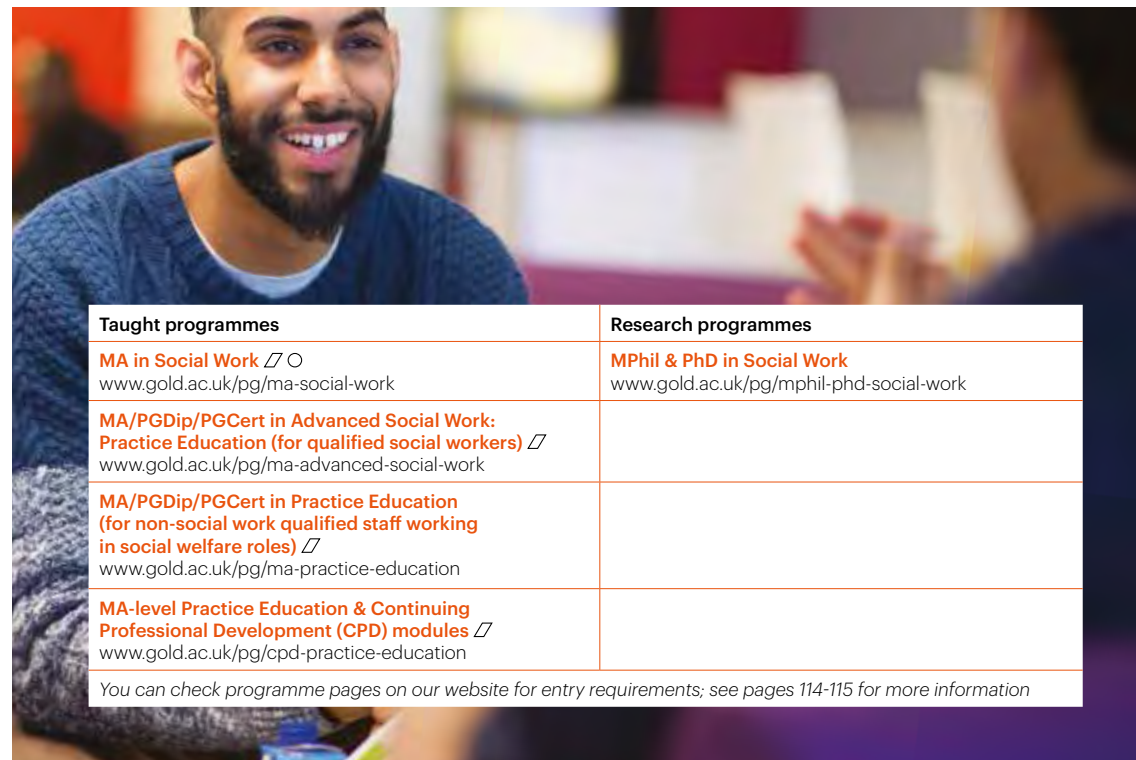
Key fact

Our graduates have gone on to work in local authority children's and adult services departments, and independent and voluntary sector agencies such as the NSPCC, Family Action and MIND



Find out more

www.gold.ac.uk/stacs or watch our departmental film at vimeo.com/goldsmiths/socialwork



Taught programmes

MA in Social Work
www.gold.ac.uk/pg/ma-social-work

MA/PGDip/PGCert in Advanced Social Work: Practice Education (for qualified social workers)
www.gold.ac.uk/pg/ma-advanced-social-work

MA/PGDip/PGCert in Practice Education (for non-social work qualified staff working in social welfare roles)
www.gold.ac.uk/pg/ma-practice-education

MA-level Practice Education & Continuing Professional Development (CPD) modules
www.gold.ac.uk/pg/cpd-practice-education

Research programmes

MPhil & PhD in Social Work
www.gold.ac.uk/pg/mphil-phd-social-work

You can check programme pages on our website for entry requirements; see pages 114-115 for more information

SOCIOLOGY

Join one of the largest and most innovative sociology departments in the country.

We have an impressive reputation for the quality of our teaching, and we're ranked 9th in the UK and 35th in the world for research in sociology.

Student insight

"There is a very specific atmosphere on the Goldsmiths campus that is hard to explain. As students you are actively encouraged to push boundaries with your work and experiment with new methodologies. Students arrive from all over the world, and lectures and seminars are held cross-platform, bringing people together from across various MA degrees. This is invaluable and creates an interesting platform for discussion and debate around the concepts of practice, theory and current sociological issues."

Tanya, MA in Photography & Urban Cultures



Why study sociology at Goldsmiths?

You'll be in conversation with academics who are experts in their field, published authors and media commentators in their own right.

You'll join a lively mix of students from all over the world, with different histories, experiences and expertise.

Staff in the department carry out world-class research that informs their teaching, bringing you cutting-edge developments in sociological thinking.

We play a unique role in defining the discipline, setting agendas and intervening in key debates.

We are pioneers of a 'live' sociology that connects to contemporary social issues - reflected in our work on methods, human rights, biomedicine, financial economy, class and the super-rich, urban life and the inner city, new media and globalisation.

We host visiting academics from all over the world, presenting papers, sharing research, and making our department a central hub for intellectual debate.

Our research is strongly interdisciplinary, often carried out in collaboration with other universities and partners in industry, government and the creative sector. In the past we've collaborated with Intel, UNICEF, United Nations, the BBC, the Wellcome Trust and Amnesty International.



Key fact

Sociology: 9th in the UK for the quality of our research**, and 35th in the world in the QS World University Rankings by Subject 2016



Find out more

www.gold.ac.uk/sociology or watch our departmental film at vimeo.com/goldsmiths/sociology

We regularly secure large-scale research funding - recent projects have included working with lawyers, activists and policy makers to develop new models of gender justice for survivors of rape in war, and working with civil protection organisations in disaster situations.

We conduct theoretically informed empirical research and we are passionate about training the next generation of social researchers.

Research in the department is focused around six clusters: race, religion and nationalism; world cities, economies and social exclusion; culture and social theory; gender and social life; politics, rights and globalisation; life sciences, medicine, technology and health.

Find out more about our staff and their research interests at www.gold.ac.uk/sociology/staff

Taught programmes

MA in Brands, Communication & Culture

www.gold.ac.uk/pg/ma-brands-communication-culture

MA in Cities & Society

www.gold.ac.uk/pg/ma-cities-society

MA in Critical & Creative Analysis

www.gold.ac.uk/pg/ma-critical-creative-analysis

MA in Gender, Media & Culture

www.gold.ac.uk/pg/ma-gender-media-culture

MA in Human Rights, Culture & Social Justice

www.gold.ac.uk/pg/ma-human-rights

MA in Photography & Urban Cultures

www.gold.ac.uk/pg/ma-photography-urban-cultures

MA in Race, Media & Social Justice*

www.gold.ac.uk/pg/ma-race-media-social-justice

*New programme: subject to validation

MA in Social Research

www.gold.ac.uk/pg/ma-social-research

MA in Visual Sociology

www.gold.ac.uk/pg/ma-visual-sociology



Research programmes

MRes in Sociology

www.gold.ac.uk/pg/mres-sociology

MPhil & PhD in Sociology

www.gold.ac.uk/pg/mphil-phd-sociology

MPhil & PhD in Visual Sociology

www.gold.ac.uk/pg/mphil-phd-visual-sociology

You can check programme pages on our website for entry requirements; see pages 114-115 for more information

THEATRE & PERFORMANCE

From investigating artefacts, texts and theatre forms to performance studies, we provide a unique context for studying contemporary and historical theatres, and for creative critical research practices.

Student insight

“Having always been around the world of performance, with training in stage management and film production, and a career in arts administration and video production, I began to develop my own creative practice as a spoken word artist. It was after four years of producing and touring my own solo work that I felt a desire to broaden my practice and find different approaches to creating. I wanted a programme where I could learn by doing, and learn as much from my cohort as from the professional tutors present. The MA has been exactly that. It is a unique programme that is as international as it is interdisciplinary (that is to say very). In one intensive year it brings together a vibrant community of artists of varied talents and disciplines, unified by their shared passion for expressing themselves performatively.”

Paula, MA in Performance Making



Why study theatre and performance at Goldsmiths?

Our ethos is interdisciplinary and intercultural. Our programmes are shaped by internationally recognised staff research expertise in theatre and performance cultures from Europe, Africa, Asia and the USA.

You'll be joining an international, forward-thinking and open-minded environment.

You'll be studying on programmes that draw on rich staff research specialisms: from critical and post-colonial theories, performance theory, theatre history, world theatres, political activism and applied theatres, to physical theatres and new writing, multimedia, live art and dance.

You'll learn from internationally renowned scholars and practitioners on our staff as well as from our distinguished regular guests.

You'll be working with professionals who know how theatre can transform lives and effect social change.

You'll develop your historical and cultural knowledge within Goldsmiths' interdisciplinary context.

You'll be supported to find your own intellectual/critical/creative voice.

You'll develop your thinking in writing and practice.

You'll collaborate across difference.



Key fact

Our graduates make a real difference internationally. Find out more at www.gold.ac.uk/theatre-performance/our-alumni



Find out more

www.gold.ac.uk/theatre-performance



You'll benefit from resources such as Goldsmiths' excellent Library, and departmental facilities that include purpose-built studios, a 160-seat theatre, and brand new workshops to support analogue and digital screenplay.

Your practice will be supported by a team of professional technicians.

You'll be immersed in a lively research environment, with regular events and two departmental research centres.

You'll join a community of students, staff and graduates who are making their mark in today's culture.

You'll graduate equipped to forge your own career with a mind of your own.

You'll benefit from the department's international professional networks and associate organisations in London that include LIFT, Battersea Arts Centre, Almeida Theatre, The Albany, Unfinished Histories, Artsadmin, Toynbee Studios and CENS, offering internships and performance, creative and research opportunities.

The MA in Creative and Cultural Entrepreneurship is taught in our Institute for Creative and Cultural Entrepreneurship (page 84), with a Theatre and Performance pathway.

Find out more about our staff and their research interests at www.gold.ac.uk/theatre-performance/staff

Taught programmes

MA in Applied Theatre: Drama in Educational, Community & Social Contexts 
www.gold.ac.uk/pg/ma-applied-theatre

MA in Black British Writing
www.gold.ac.uk/pg/ma-black-british-writing

MA in Creative & Cultural Entrepreneurship: Theatre & Performance Pathway
www.gold.ac.uk/pg/ma-creative-cultural-entrepreneurship-theatre

MA in Musical Theatre
www.gold.ac.uk/pg/ma-musical-theatre

MA in Performance & Culture: Interdisciplinary Perspectives
www.gold.ac.uk/pg/ma-performance-culture

MA in Performance Making
www.gold.ac.uk/pg/ma-performance-making

MA in World Theatres
www.gold.ac.uk/pg/ma-world-theatres

MA in Writing for Performance
www.gold.ac.uk/pg/ma-writing-performance

Research programmes

MPhil & PhD in Drama
www.gold.ac.uk/pg/mphil-phd-drama

You can check programme pages on our website for entry requirements; see pages 114-115 for more information

THERAPEUTIC STUDIES

Goldsmiths has a long-established reputation for the provision of training in therapeutic studies, including counselling and therapy. We offer a supportive learning environment, excellent teaching and tutoring, and a thriving research environment.

Student insight

“It has been an amazing experience getting to fulfil my ambition of becoming an art psychotherapist by studying for a Masters at Goldsmiths. Over the past three years I have attended music recitals, joined the art therapy exhibition committee, worked in the ceramics studio and utilised the vast resources available in the Goldsmiths library. I have thrived both creatively and academically. The course has far exceeded my expectations and I am very grateful for the training the department has provided. It is my hope to set up an art therapy practice with other therapists in the future, providing a safe space for creative expression, especially for those who are marginalised in society.”

Paula, MA in Art Psychotherapy



Why study therapeutic studies at Goldsmiths?

In line with the Goldsmiths tradition, we use innovative, exciting and experiential teaching methods, while maintaining excellence and rigour.

Our professional MAs open the door to accreditation with the respective professional bodies.

We played a central role in the development of art psychotherapy and dance movement psychotherapy, so you'll be taught by pioneers in their fields.

We have a well-established reputation for producing high quality therapists and practitioners, facilitating the post-qualification professional path of our graduates.

We emphasise the importance of engaging critically with different therapeutic traditions.

We encourage free dialogue, and critical and creative thinking among our students.

We promote multidisciplinary work and engage with social and cultural discourses and ideas.

The lecturers, seminar leaders and tutors on our programmes are practising counsellors and therapists, offering a wide range of experience from both the public and private sectors.

These programmes are offered by the Department of Social, Therapeutic and Community Studies. Find out more about the department and our staff at www.gold.ac.uk/stacs



Key fact

Our professional Masters programmes involve supervised placements and internships



Find out more

www.gold.ac.uk/stacs
or watch our departmental film at vimeo.com/goldsmiths/therapeuticstudies



Taught programmes

Certificate in Humanistic & Psychodynamic Counselling

www.gold.ac.uk/pg/cert-humanistic-counselling

MA in Art Psychotherapy

www.gold.ac.uk/pg/ma-art-psychotherapy

MSc/PGDip in Cognitive Behavioural Psychotherapy*

www.gold.ac.uk/pg/msc-cognitive-behavioural-psychotherapy
*New programme: subject to validation

MA in Counselling

www.gold.ac.uk/pg/ma-counselling

MA in Dance Movement Psychotherapy

www.gold.ac.uk/pg/ma-dance-movement-psychotherapy

MA in Understanding Domestic Violence & Sexual Abuse

www.gold.ac.uk/pg/ma-udvsa

Research programmes

MPhil & PhD in Art Psychotherapy

www.gold.ac.uk/pg/mphil-phd-art-psychotherapy

MPhil & PhD in Psychoanalytic Studies

www.gold.ac.uk/pg/mphil-phd-psychoanalytic-studies

You can check programme pages on our website for entry requirements; see pages 114-115 for more information

VISUAL CULTURES

The Department of Visual Cultures at Goldsmiths provides a culturally diverse and intellectually challenging environment in which to explore and produce new forms of contemporary art-theoretical practice.

Graduate insight

“During my time at Goldsmiths I enjoyed the chance to think laterally about contemporary art. I developed research, writing and presentation skills, all of which helped me grow creatively and led to several freelance curating and writing projects. My tutors were particularly inspiring, and I met many like-minded and interesting friends with whom I collaborated and developed projects. A year after graduating I got my current job at Tate. I curate Public Programme events at Tate Britain and Modern: talks, symposia, film screenings, performances, courses and workshops. I have managed Late at Tate Britain since 2009, and contributed to many other programmes.”

Marianne Mulvey (MA in Contemporary Art Theory, 2008), Curator, Public Programmes at Tate



Why study visual cultures at Goldsmiths?

We're one of the few university departments internationally to have developed programmes that consider contemporary art and culture beyond the disciplinary parameters of traditional art history.

We look at art in an international context, and consider the ways in which it engages with urgent social, cultural and political issues in the world today.

We explore visual culture within a framework of critical theory, philosophy and cultural studies. Included are issues of cultural difference, performativity, visual display, aurality, encounters with audiences, and the production of subjectivities.

Our approach to learning, teaching and research is exploratory and innovative, yet rigorous. We'll encourage you to develop independence of thought by discovering, evaluating and making appropriate use of a wide range of historical, theoretical, creative and often collaborative approaches to research and writing.

A coordinated programme of events and resources is in place to help you develop your skills and employability.

Our former students take up a wide variety of creative and professional roles within contemporary art and culture across the globe. Many of our alumni have set up independent cultural initiatives that foster new types of exhibitions and publications.

We help develop academically rigorous, innovative research at MPhil and PhD level through a combination of taught courses, personal research and tutorial supervision. Learning is supported by a variety of staff-student research seminars and workshops.

We offer research supervision in a wide range of visual cultural approaches to: art and philosophy, performance studies, the curatorial, art and globalisation, architecture and spatial practice, animal studies, queer studies, and art's relationship to sound and popular music. Current research students are exploring topics that include 'Ambivalent images - regarding the United Nations', 'Re-imagining precarity: feminist art practice as militant research', 'Structures of feeling: on architectures and narratives' and 'Performing the AIDS archive (of the South)'.

Find out more about our staff and their research interests at www.gold.ac.uk/visual-cultures/staff



Key fact

As a student in London you'll be well-placed to take advantage of the many galleries, art spaces, museums, cultural facilities and specialist libraries in the capital



Find out more

www.gold.ac.uk/visual-cultures or watch our departmental film at vimeo.com/goldsmiths/visual-cultures

Taught programmes

Graduate Diploma in Contemporary Art History

www.gold.ac.uk/pg/grad-dip-contemporary-art-history

MA in Contemporary Art Theory

www.gold.ac.uk/pg/ma-contemporary-art-theory

MA in Research Architecture Δ \square

www.gold.ac.uk/pg/ma-research-architecture

Research programmes

MRes in Curatorial/Knowledge

www.gold.ac.uk/pg/mres-curatorial-knowledge

MRes in Visual Cultures

www.gold.ac.uk/pg/mres-visual-cultures

MPhil & PhD in Curatorial/Knowledge

www.gold.ac.uk/pg/mphil-phd-curatorial-knowledge

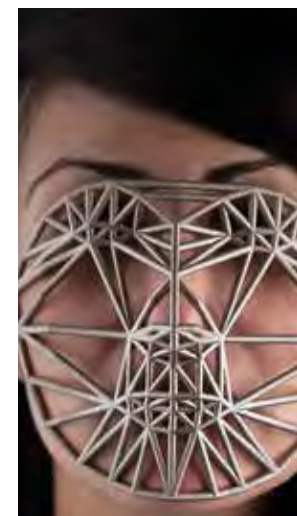
MPhil & PhD in Research Architecture

www.gold.ac.uk/pg/mphil-phd-research-architecture

MPhil & PhD in Visual Culture

www.gold.ac.uk/pg/mphil-phd-visual-culture

You can check programme pages on our website for entry requirements; see pages 114-115 for more information



SPECIALIST PROGRAMMES FOR INTERNATIONAL STUDENTS



PRE-SESSIONAL ENGLISH LANGUAGE PROGRAMMES (5-14 WEEKS)



How to apply
Visit www.gold.ac.uk/pg/pre-sessional-english-language where you will find a link to the application form

Improve your English language and academic skills before you begin your course

We offer intensive programmes for international students who want to improve their English language skills before they begin full-time study in the arts and social sciences at a UK university. The programmes last between five and 14 weeks depending on your existing level of English language, and cover academic study skills, cultural background studies, and critical analysis. They start from May onwards each year, preparing you for studies beginning in the autumn. For the latest details, visit www.gold.ac.uk/international/pre-sessional-english-language

Accommodation

We have rooms available in our halls of residence for the duration of the pre-sessional courses. You can find out more about what is available on pages 34-35 or at www.gold.ac.uk/accommodation/pre-sessional

English language requirements

The IELTS required for these pre-sessional courses varies so please check the table below and the Goldsmiths website to find the right course for you. You will need a UK Visas and Immigration IELTS test for these courses. Please contact our Immigration Advisory Service if you have any questions about which test to take (immigration@gold.ac.uk).

Length and dates	IELTS entry requirements	Fees (2017-18)*
14 weeks full-time May-September	UKVI IELTS 6.0	£4,640**
9 weeks full-time July-September	Pre-Masters Pathways: UKVI IELTS 5.0 Postgraduate: UKVI IELTS 6.5	£3,300**
5 weeks full-time August-September	UKVI IELTS 6.5 (with a minimum of 6.5 in the written test)	£2,010**

*Fees are quoted for the academic year only. They are subject to annual review and are likely to increase by approximately 3-5% each year. **We ask for a £300 deposit when you accept our offer of a place. This amount is then deducted from your tuition fee when you begin the programme. Please note: students must be at least 18 years old at the start of the programme.

PRE-MASTERS PATHWAYS (1 YEAR)

Counselling & Therapy

Creative & Cultural Industries

Design

Media, Culture & Social Sciences

Music

Our Pre-Masters Pathway programmes will fully prepare you for your future postgraduate study in the UK, or act as a conversion course if you've studied one subject at undergraduate level but want to change focus at postgraduate level.

Specialise in a subject that interests you

You can specialise in a range of subjects - see pages 112-113 for further details about each of the programmes.

Improve your study skills and academic English

You will also improve your study skills and use of academic English – the essential skills you will need to successfully study a Masters degree.

Progression to our degrees

On completion of the pathway, you'll be awarded a Graduate Diploma or Pre-Masters Certificate and be guaranteed a place on a relevant Goldsmiths degree programme (if you obtain an overall score of 50% or more; some progression routes are subject to an interview - see pages 112-113 for details).



How to apply

Visit www.gold.ac.uk/international/pathways for information about how to apply



Media, Culture & Social Sciences

www.gold.ac.uk/pg/diploma-media-culture-social-sciences

Compulsory modules

- Academic Writing and Language Development
- Academic Listening and Speaking
- Critical Moments in Western Thought: Modernity and Postmodernity
- Images and their Interpretations

Additional modules

- Issues around Modern Knowledge, Modern Power
- Issues around Media and Technologies

If you pass at the required level you can progress onto these degrees:

- MA Anthropology & Cultural Politics
- MA Applied Anthropology & Community & Youth Work
- MA Applied Anthropology & Community Development
- MA Applied Theatre: Drama in Educational, Community & Social Contexts
- MA Art & Politics
- MA Cities & Society
- MA Contemporary Art Theory
- MA Critical & Creative Analysis
- MA Development & Rights
- MA Education: Culture, Language & Identity
- MA Education: School-Based Explorations
- MA Film & Screen Studies
- MA Gender, Media & Culture
- MA Human Rights, Culture & Social Justice
- MA International Relations
- MA Media & Communications
- MA Multilingualism, Linguistics & Education
- MA Performance & Culture: Interdisciplinary Perspectives
- MA Performance Making
- MA Political Communications
- MA Postcolonial Culture & Global Policy
- MA Promotional Media: Public Relations, Advertising & Marketing
- MA Social Anthropology
- MA Social Research
- MA Sociocultural Linguistics
- MA Understanding Domestic Violence & Sexual Abuse
- MA Visual Anthropology
- MA Visual Sociology
- MA World Theatres

Creative & Cultural Industries

www.gold.ac.uk/pg/diploma-creative-cultural-industries

- Academic Writing and Language Development
- Academic Listening and Speaking
- Critical Moments in Western Thought: Modernity and Postmodernity
- Images and their Interpretations

- Introduction to Creative and Cultural Industries
- Introduction to Arts Administration and Cultural Policy

- MA Arts Administration & Cultural Policy
- MA Arts Administration & Cultural Policy: Music Pathway
- MA Creative & Cultural Entrepreneurship
- MA Cultural Policy, Relations & Diplomacy
- MA Cultural Studies
- MA Culture Industry
- MA Social Entrepreneurship
- MA Tourism & Cultural Policy

Admission to these programmes is subject to interview

Music

www.gold.ac.uk/pg/diploma-music

Compulsory modules

- Academic Writing and Language Development
- Academic Listening and Speaking
- Critical Moments in Western Thought: Modernity and Postmodernity
- Images and their Interpretations

Options such as:

- Research Essay
- Advanced Classical Performance
- Soviet Music and Beyond
- Narrative, Representation and Popular Song
- Minimalism and Postminimalism
- Advanced Topics in History: Mozart's Operas
- Improvisation

If you pass at the required level you can progress onto these degrees:

- MA Music (Contemporary Music Studies)
- MA Music (Ethnomusicology)
- MA Music (Historical Musicology)
- MA Musical Theatre
- MMus Composition
- MMus Creative Practice
- MMus Performance
- MMus Popular Music
- MMus Sonic Arts

Admission to the MA programmes is subject to interview

Counselling & Therapy

www.gold.ac.uk/pg/certificate-counselling-therapy

- Academic Writing and Language Development
- Academic Listening and Speaking
- Critical Moments in Western Thought: Modernity and Postmodernity
- Images and their Interpretations

Options such as:

- Dance Movement Psychotherapy Foundation
- Art Psychotherapy Foundation
- Humanistic and Psychodynamic Counselling

- MA Art Psychotherapy
- MA Counselling
- MA Dance Movement Psychotherapy

Design

www.gold.ac.uk/pg/diploma-design

- Academic Writing and Language Development
- Academic Listening and Speaking

- Introduction to Design Studio Practice

- Studio Project: Application of Methods and Processes
- Pathway Design Project

- Masters programmes in the Department of Design

Length

1 year full-time

IELTS entry requirements

Any IELTS test at 5.5 or equivalent

Fees per year (2017-18)*

£12,830

*Fees are quoted for the academic year only. They are subject to annual review and are likely to increase by approximately 3-5% each year.

ENTRY REQUIREMENTS

Our minimum entry requirements are outlined below. Some of our Masters degrees will have higher entry requirements, or specific portfolio, work experience or fitness to train requirements for example. You might also be considered for some programmes if you aren't a graduate, but have relevant experience and can show that you have the ability to work at postgraduate level. You should check online prospectus entries for the most up-to-date entry requirements.

We've indicated on pages 62-107 the programmes where we ask for the following:

- ∟ Work experience
- △ Practical experience/proficiency
- Portfolio/examples of your work
- Fitness to train

Minimum entry requirements

For Masters degrees, Postgraduate Diplomas and Postgraduate Certificates

You should normally have (or expect to be awarded) an undergraduate degree of at least second class standard in a relevant subject.

For MRes programmes

You should normally have (or expect to be awarded) an undergraduate degree of at least upper second class standard in a relevant subject.

For MPhil/PhD programmes

You should normally have (or expect to be awarded) a taught Masters in a relevant subject.

For Pre-sessional English Language programmes and Pre-Masters Pathways

See pages 109-113.

International qualifications

We accept a wide range of international qualifications in addition to the ones listed here. You can find out more about the qualifications we accept from around the world at www.gold.ac.uk/international/regions

English language requirements

If English isn't your first language, you'll need to meet our English language requirements to study with us. We accept a wide range of proficiency qualifications but prefer IELTS. If you need assistance with your English language, we offer a range of Pre-Masters Pathways and Pre-sessional English Language programmes that can help prepare you for postgraduate study - find out more on pages 109-113.

For degree programmes

As a guide, you normally need a minimum score of 6.5 in IELTS (with a minimum of 6.5 in the written test). However, some of our programmes require a score of 7.0 in IELTS (with a minimum of 7.0 in the written test). This will be stated on online prospectus entries.

For Pre-sessional English Language programmes and Pre-Masters Pathways

See pages 109-113.

Get in touch

If you have any questions before you apply you can email our Enquiries team: course-info@gold.ac.uk

If you have any questions after you've applied you can email our Admissions team: admissions@gold.ac.uk

You can also call +44 (0)20 7078 5300.



Find out more

You can find out more about how to apply on page 22 or at www.gold.ac.uk/pg/apply

In addition to IELTS we also accept the following qualifications for study at degree level or above as proof of English language capability. Students who hold the following qualifications at the right level will not need to submit an IELTS test score. If your qualification isn't listed, please contact admissions@gold.ac.uk

Proof of English – acceptable qualifications	Result*
A-level in English from a UK awarding body	Grade C
Bellerbys Foundation Programme**	65% overall
Cambridge Advanced English	Grade C
Cambridge Proficiency English	Grade C
CATS College	Please contact our Admissions team
GCSE/O-level in English from a UK awarding body	Grade C
Hong Kong Examinations and Assessments Authority	Grade 4
Indian Standard X/Indian Standard XII	75% in both exams
International Baccalaureate (taught in English)	Successful completion at 28+ points
International Baccalaureate with English as a subject	At Higher Level 4
International Baccalaureate English Language A: Literature/International Baccalaureate English Language A: Language & Literature	At Higher Level 4 or Standard Level 5
International Baccalaureate English Language B	At Higher Level 4 or Standard Level 6
INTO University Foundation Programme**	Please contact our Admissions team
INTO University Graduate Diploma	Please contact our Admissions team
Kaplan University Foundation Certificate**	Please contact our Admissions team
Kaplan Pre-Masters Programme	Grade B or 65% overall
Malaysian 1119 English module	Grade B
Norwegian Vitnemal in English	Grade 4
OnCampus (CEG) Undergraduate Foundation Programme**	Please contact our Admissions team
Singapore Integrated Programme (IP) in Language Arts	Grade C
Singapore O/A Level	Grade C
USA 3 Advanced Placements	Grades 333

*Results listed above are equivalent to IELTS 6.5; please visit www.gold.ac.uk/pg/apply/english-language or contact our Admissions team for additional equivalencies and further details. English language qualifications should be less than two years old at the time you will start your studies with us. **The English component score can be accepted as proof of English.

VISAS AND IMMIGRATION

If you are from outside the European Economic Area you probably need a visa to study with us. The main type for postgraduate students is a Tier 4 visa.

Tier 4 (General) visas

This is the most common type of student visa, and is for students studying full-time with Goldsmiths. If you require a Tier 4 student visa you will need to demonstrate to UK Visas and Immigration (UKVI) that you can cover your living costs as well as your fees when you make your visa application. For most students applying for a visa to study with us in 2016/17 this was £11,385 a year plus fees. For further information visit www.gold.ac.uk/immigration/before-you-arrive/tier4/financial-requirements

Guidance and support

The Immigration Advisory Service (IAS) at Goldsmiths provides visa advice and guidance to all international students - from before you arrive, through to when you graduate. This includes help with making a student visa application overseas, travelling around Europe during vacations, and applying for work visas after your studies.

The IAS web pages contain lots of information (www.gold.ac.uk/immigration) and you can contact the IAS at any point by email for help and guidance: immigration@gold.ac.uk

For more information about Tier 4 visas, you can visit the UKVI web pages - www.gov.uk/tier-4-general-visa

If you're applying from overseas: we will write to you at each step of the application process with important visa information, and will support you through the process. You can also take part in dedicated web chats to ask us about the visa application process.

If you're applying from inside the UK: the IAS will help you make your application. Check our website for ways to get in touch: www.gold.ac.uk/immigration/contact

Further information

If you have already applied to Goldsmiths and have a question, you can contact our International team by emailing international@gold.ac.uk or calling +44 (0)20 7078 5300.

Please note: the rules about student visas change regularly. You should check with the IAS if you are unsure about something.

The visa and immigration advice on this page is correct at the time of print. For the most up-to-date information please visit our website.



Find out more
www.gold.ac.uk/immigration

FEES

Below you'll find the typical ranges of tuition fees for full-time students in 2017 (fees are quoted per year and are subject to annual review).

Fees for students from European Union countries are being fixed at the same rate as fees for UK students until (and including) 2018.

The UK government classifies a student's fee status as either 'home/EU' or 'international'. To find out your fee status you can visit the UK Council for International Student Affairs (UKCISA) website: www.ukcisa.org.uk

Home/EU students

MA, MFA & MSc programmes: £5,960-£12,190

MMus programmes: £6,580-£9,550

PGCE programmes: These fees are set by the UK government, and the 2017 fees have not yet been announced. As a guide, for 2016 entry the fees were £9,000.

MRes programmes: £5,960-£7,300

MPhil/PhD programmes: These fees are set by Research Councils, and the 2017 fees have not yet been announced. As a guide, for 2016 entry the fees were £4,180-£5,130.

International students

Pre-Masters Pathways: £12,830

MA, MFA & MSc programmes: £13,500-£21,220

MMus programmes: £13,500-£17,280

PGCE programmes: £14,170

MRes programmes: £13,500-£17,280

MPhil/PhD programmes: £13,500-£18,620

Please check www.gold.ac.uk/pg/fees-funding to find the exact fee for each programme.

Tuition fees are due at or before enrolment. The payment of your annual tuition fee can be spread over a series of direct debit payments, starting in October 2017. You can also pay by cheque and most major credit cards or online.

Early Payment Discount Scheme

If the tuition fee for your programme is £6,700 or more and you pay your fee in full by the last Friday in the August before enrolment, you are entitled to a discount of 2.5% on the fee due. Visit www.gold.ac.uk/student-services/tuition-fees

Advanced fee payments

All self-financed students who are 'international' for the purposes of tuition fees are asked to pay an advanced payment of tuition fees of £3,000 by May (prior to starting a degree programme the following September) to secure their admission. This money is deducted from your total fee liability for the academic year, and if you do require a Tier 4 visa, we will list the payment on your Confirmation of Acceptance of Studies (CAS) statement.

'Self-finance' is defined as any student without a UK Visas and Immigration (UKVI) defined official sponsor. Official sponsors include any university, government, international organisation or company. Full details will be sent if you are offered a place at Goldsmiths. You can find out more about the advanced payment of fees at: www.gold.ac.uk/immigration/before-you-arrive/other-information/advancedpayment

All information was correct at the time of print. For the latest information please visit www.gold.ac.uk/pg/fees-funding

FUNDING AND FINANCIAL SUPPORT

As a postgraduate student there are several types of funding that may be available to you: funding from Goldsmiths; funding from research councils; funding from the UK government; and external sources of funding.

Funding from Goldsmiths

There's more postgraduate funding available at Goldsmiths than ever before. For 2016 entry we offered over more than £300,000 in scholarships and bursaries, as well as discount schemes. They included:

- **Goldsmiths Masters Scholarships**
Worth £1,000 each; 30 awards available
- **Goldsmiths Excellence Fee Waivers**
Up to 30% fee discount for taught Masters students; unlimited
- **Goldsmiths Alumni Fee Waivers**
Up to 30% fee discount for taught Masters students; unlimited
- **PGCE fee waivers and bursaries**
Worth from £3,000 to £9,000; 12 awards available
- **International scholarships**
We offer generous scholarships and fee waivers each year, please visit www.gold.ac.uk/international/fees-funding/international-scholarships for details
- **Departmental awards**
Some of our departments offered subject-specific funding

You can find the latest funding and scholarships information on our website at www.gold.ac.uk/pg/fees-funding

Funding from research councils - PhD studentships

We've been successful in securing multimillion pound funding for PhDs in the arts and humanities, computing, creative industries and the social sciences, through our involvement in several doctoral training centres and consortiums. This currently includes:

- **75 studentships per year** available through the CHASE AHRC Doctoral Training Partnership, for research in the arts and humanities
- **12 studentships per year** available through the Design Star Consortium, for research in design
- **11 studentships per year** available through the EPSRC Centre for Doctoral Training in Intelligent Games and Game Intelligence, for digital games researchers, designers, developers and entrepreneurs

Studentships generally cover tuition fees, an annual maintenance grant (sometimes called a 'stipend'), and research training.



Find out more
www.gold.ac.uk/pg/fees-funding

Funding from the UK government

In June 2016 applications opened for the new Postgraduate Loan Scheme, sponsored by Student Finance England. These loans are open to students interested in studying taught Masters degrees.

The loans, which are up to £10,000 per student, are:

- A contribution towards the cost of study
- Non-means tested
- Paid directly to the student into a UK bank account

Eligibility for the loans will depend on the student as well as the programme they choose to study.

Student eligibility

To be eligible you must be:

- Under 60 years of age
- A UK national (or someone with settled status in the UK) who has been resident in England for at least three years before the start of the course*
- Studying your first Masters degree

*You may also be eligible if you are an EU national or have the residency status of refugee, humanitarian protection, EEA or Swiss migrant worker, a family member of any of the previous categories, or a child of a Swiss national or child of a Turkish worker.

Course eligibility

The course you want funding for should be:

- A taught or research-based Masters (ie MA, MSc, MRes)
- Based in the UK (if it has an overseas element, this cannot exceed 50% of the course)

Both full-time and part-time courses are eligible.

The following courses are not eligible: Postgraduate Certificates (PGCert), Postgraduate Diplomas (PGDip), PGCEs, MPhil/PhDs.

Other restrictions may apply.

Find out more

Please visit www.gov.uk/postgraduate-loan for additional information.

External sources of funding

There are hundreds of external organisations such as charities, trusts and foundations that offer grants to students, and it's well worth researching these opportunities. Websites like www.prospects.ac.uk/funding and www.postgraduatestudentships.co.uk can be good starting points.

International students

Funding and visa requirements

International students can usually only study full-time programmes, depending on the terms of their visa. If you require a Tier 4 student visa, the UK government requires you to be able to demonstrate that you have sufficient funds to meet your tuition and maintenance costs.

Federal loan students for North American Students

For eligible students from the US, we are approved by the US Department of Education to offer federal loans. If you wish to be considered, you should complete the Free Application for Federal Student Aid (FAFSA) and list Goldsmiths as a college to receive the results of your FAFSA. Our Federal School Code is G11765. For full details see www.gold.ac.uk/student-services/financial-assistance/usloans

Canadian students are also able to use their government loans. Goldsmiths is registered to certify national and provincial loans and grants.

Working during your studies

You may wish to find part-time work during your studies. If you have a Tier 4 student visa, you will only usually be able to work for 20 hours during the week in term time, and full-time in vacation periods. You can find out more on the Immigration Advisory Service web pages: www.gold.ac.uk/immigration/during-your-studies/working-while-studying

If you want to know more about working during your studies, the IAS offers a series of dedicated visa drop-in sessions during the year. You can check the dates at www.gold.ac.uk/immigration/contact

Country-specific funding

Your home country may offer scholarships or special funding opportunities.

To find out more please visit www.gold.ac.uk/international/regions

Goldsmiths Banco Santander scholarship

In partnership with Banco Santander, Goldsmiths awards seven scholarships to outstanding candidates from within the Santander scheme. Each scholarship provides a £5,000 fee waiver for a taught Masters programme and is tenable for one year. Find out more at www.gold.ac.uk/international/financial-info/international-scholarships/santander

External sources of funding

We advise you to contact the Ministry of Education in your home country for information about any government-funded schemes that may be available for studying abroad. You should also contact your local British Council office, British High Commission or Embassy for further information about sources of funding.

Read our guide to external funding sources at www.gold.ac.uk/international/financial-info/international-scholarships/external

There are a number of external organisations that provide full or partial funding to students who meet specific eligibility criteria. For example, the Aga Khan Foundation Scholarships provide funds towards tuition fees and living costs. Visit www.akdn.org

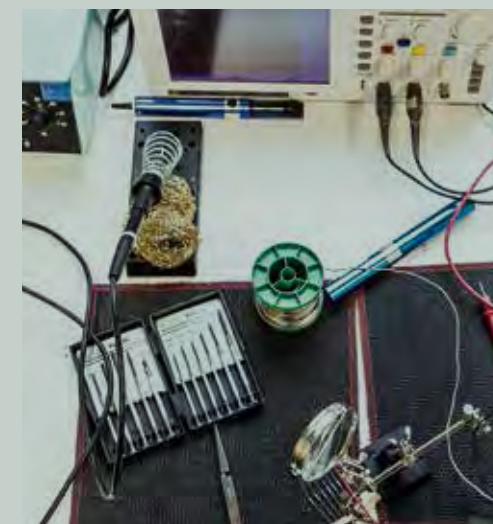
There are many other similar organisations that offer funding and you can use the following websites to carry out a comprehensive search:

- Association of Commonwealth Universities: www.acu.ac.uk
- British Council: www.educationuk.org
- Foreign & Commonwealth Office: www.fco.gov.uk
- Scholarship Search: www.scholarship-search.org.uk

Living costs

The cost of living and studying in London can be higher than some parts of the UK, although Goldsmiths' location in South-East London means that things like accommodation costs tend to be lower than in many other parts of the city. For more information about budgeting for your studies, visit www.studentcalculator.org.uk/international

If you are an international student, we advise you to have at least £300 in British currency on your arrival in the UK for your immediate needs until you arrange a UK bank account.



INDEX OF PROGRAMMES

Taught programmes

Advanced Social Work: Practice Education MA
 Anthropology & Cultural Politics MA
 Applied Anthropology & Community Arts MA
 Applied Anthropology & Community Development MA
 Applied Anthropology & Community & Youth Work MA
 Applied Theatre: Drama in Educational, Community & Social Contexts MA
 Art & Politics MA
 Art Psychotherapy MA
 Artists' Film MA
 Artist Teachers & Contemporary Practices MA
 Arts Administration & Cultural Policy MA
 Arts Administration & Cultural Policy: Music Pathway MA
 Black British Writing MA
 Brands, Communication & Culture MA
 Children's Literature MA
 Children's Literature: Children's Illustration MA
 Cities & Society MA
 Cognitive Behavioural Psychotherapy MSc/PGDip
 Cognitive & Clinical Neuroscience MSc
 Comparative Literary Studies (with pathways in: American Literature & Culture; Comparative Literature & Criticism; Literature of the Caribbean & its Diasporas; Modern Literary Theory; Modern Literature; Romantic & Victorian Literature & Culture; Shakespeare: Early & Modern) MA
 Composition MMus
 Computational Arts MA/MFA
 Computer Games Art & Design MA
 Computer Games & Entertainment MSc
 Consumer Behaviour MSc
 Contemporary Art History GradDip
 Contemporary Art Theory MA
 Counselling MA
 Creative & Cultural Entrepreneurship (with pathways in: Computing; Design; Fashion; Leadership; Media & Communications; Music; Theatre & Performance) MA
 Creative & Life Writing MA
 Creative Practice MMus
 Critical & Creative Analysis MA

What you need to know

Cultural Policy, Relations & Diplomacy MA
 Cultural Studies MA
 Culture Industry MA
 Curating MFA
 Dance Movement Psychotherapy MA
 Data Science MSc
 Development & Rights MA
 Digital Culture MA
 Digital Journalism MA/MSc
 Digital Media: Technology & Cultural Form MA
 Education: Culture, Language & Identity MA
 Education: School-Based Explorations MA
 Events & Experience Management MA
 Fine Art MFA
 Film & Screen Studies MA
 Filmmaking (with pathways in: Cinematography; Editing; Directing Fiction; Producing; Screen Documentary; Sound Recording & Design) MA
 Forensic Psychology MSc
 Foundations in Clinical Psychology & Health Services MSc
 Gender, Media & Culture MA
 Global Media & Transnational Communications MA
 History MA
 Human Rights, Culture & Social Justice MA
 Humanistic & Psychodynamic Counselling Certificate
 Independent Games & Playable Experience Design MA
 International Relations MA
 Journalism MA
 Luxury Brand Management MA
 Management of Innovation MSc
 Media & Communications MA
 Multilingualism, Linguistics & Education MA
 Museums & Galleries Entrepreneurship PGCert
 Music (with pathways in: Contemporary Music Studies; Ethnomusicology; Historical Musicology; Popular Music Research; General) MA
 Music, Mind & Brain MSc
 Musical Theatre MA
 Occupational Psychology MSc
 Performance & Culture: Interdisciplinary Perspectives MA
 Performance MMus
 Performance Making MA
 Photography & Urban Cultures MA
 Photography: The Image & Electronic Arts MA
 Political Communications MA
 Politics, Development & the Global South MA
 Popular Music MMus
 Postcolonial Culture & Global Policy MA
 Practice Education MA/PGDip/PGCert
 Practice Education & Continuing Professional Development (CPD) modules
 Promotional Media: Public Relations, Advertising & Marketing MA
 Psychology of Social Relations MSc

Queer History MA
 Race, Media & Social Justice MA
 Radio MA
 Research Architecture MA
 Screen Composition MMus
 Script Writing MA
 Social Anthropology MA
 Social Entrepreneurship MA
 Social Research MA
 Social Work MA
 Sociocultural Linguistics MA
 Sonic Arts MMus
 Television Journalism MA
 Translation MA
 Translational Behavioural Science MSc
 Tourism & Cultural Policy MA
 Understanding Domestic Violence & Sexual Abuse MA
 Visual Anthropology MA
 Visual Sociology MA
 World Theatres MA
 Writer/Teacher MA
 Writing for Performance MA

PGCE programmes

Primary PGCE
 Primary with Mathematics PGCE
 Secondary Standard Programme PGCE:
 Art & Design; Biology; Chemistry; Design & Technology; Drama; English; Mathematics; Media Studies with English; Modern Languages; Physics
 Secondary Part-Time Programme PGCE:
 Design & Technology; English; Science (Biology, Chemistry, Physics)

Research programmes

MRes
 Anthropology
 Curatorial/Knowledge
 Design
 Digital Journalism
 English
 Filmmaking, Photography & Electronic Arts
 History
 Media & Communications
 Research Methods in Psychology
 Sociology
 Visual Anthropology
 Visual Cultures

MPhil & PhD

Anthropology
 Art
 Art Practice & Learning
 Art Psychotherapy
 Arts & Computational Technology
 Community & Youth Work
 Computer Science
 Creative Writing
 Cultural Studies
 Curating
 Curatorial/Knowledge
 Design
 Drama
 Education
 English, Comparative Literature or Linguistics
 History
 Institute for Creative & Cultural Entrepreneurship
 Intelligent Games & Game Intelligence
 Management
 Media & Communications
 Music (Research, Composition, Performance Practice, or Sonic Arts)
 Politics
 Psychoanalytic Studies
 Psychology
 Psychology (IMS)
 Religious Studies
 Research Architecture
 Social Work
 Sociology
 Visual Anthropology
 Visual Culture
 Visual Sociology



Please note

Most of our departments (see page 20) offer research opportunities, so if your area of interest isn't listed above feel free to get in touch with a suitable member of staff directly



Find out more

Explore our programmes at www.gold.ac.uk/course-finder

Original design by
Alphabetical
Printed by Trade Winds Ltd

Thank you to the artists,
photographers and
designers whose work
is shown.

Image credits: page 19
John Harvey photo by
Molly Boiling; p54 top left
and top right: Jessica Rose;
p55 bottom: Younghee
Lee; p57 bottom: Yael
Stern; p59 top right: Vinny
Montag; page 65 bottom:
Jin Wook Moon; page 75
top: Exquisite Collapse,
at Blip Blip Blip in Leeds,
2015 (photo by Harry
Meadley); page 75 bottom:
Viktor Timofeev: Proxyah
(v2), at JupiterWoods,
2015 (photo by Damian
Griffiths); page 95 bottom:
Pablo Vitale; page 101 top
and bottom: Carlo Navato;
page 107 top: Zach Blas,
Facial Weaponization Suite:
Mask - November 20, 2013
(photo by Christopher
O'Leary); page 107 bottom:
Zach Blas, Face Cage #2,
endurance performance
with Elle Mehrmand (photo
by Christopher O'Leary)

**Research quality
scores for the Research
Excellence Framework
(REF) are based on the
Times Higher Education
research intensity subject
rankings (December 2014)

Campus boundary on
inside back cover map
is approximate.

Terms & Conditions

All students are subject to
Goldsmiths' Regulations
(published at [www.
gold.ac.uk/governance/
generalregulations](http://www.gold.ac.uk/governance/generalregulations)). When
you accept an offer to
study at Goldsmiths you
undertake to comply
with these Regulations,
with Goldsmiths' Charter,
Statutes and Ordinances
([www.gold.ac.uk/
governance](http://www.gold.ac.uk/governance)), with the
Statutes and Regulations
of the University of
London (available from
the University of London,
Senate House, Malet
Street, London WC1E
7HU), and with relevant
legislation in force at the
time. Please note that an
applicant who has not
received the official written
offer of a place from the
Goldsmiths Admissions
Office (or UCAS, UCAS
Teacher Training or SWAS
as appropriate) may not be
admitted to, or enrolled on,
a programme of study.

Equality & Diversity

Goldsmiths is committed
to equality and diversity.
You can find out more at
[www.gold.ac.uk/
equality-diversity](http://www.gold.ac.uk/equality-diversity)

Disclaimer

The information in this
publication was correct
in July 2016. Every effort is
made to ensure that the
information is accurate,
and Goldsmiths will
undertake to inform
students of any material
changes in the information
contained in it. Examples
may include but are not
limited to changes to: the
location and methods of
delivery; and the content
and syllabus of any
programme. Goldsmiths
will not be responsible
or liable for the accuracy
or reliability of any of
the information in third
party publications or
websites referred to in
this publication.

You can read our most
up-to-date disclaimer at
www.gold.ac.uk/disclaimer

© Goldsmiths, University
of London 2016

The copyright in these
pages belongs to
Goldsmiths, University
of London, and all
rights are reserved.

Goldsmiths
University of London
New Cross
London SE14 6NW
United Kingdom



GoldsmithsUoL



GoldsmithsLondon



GoldsmithsUoL

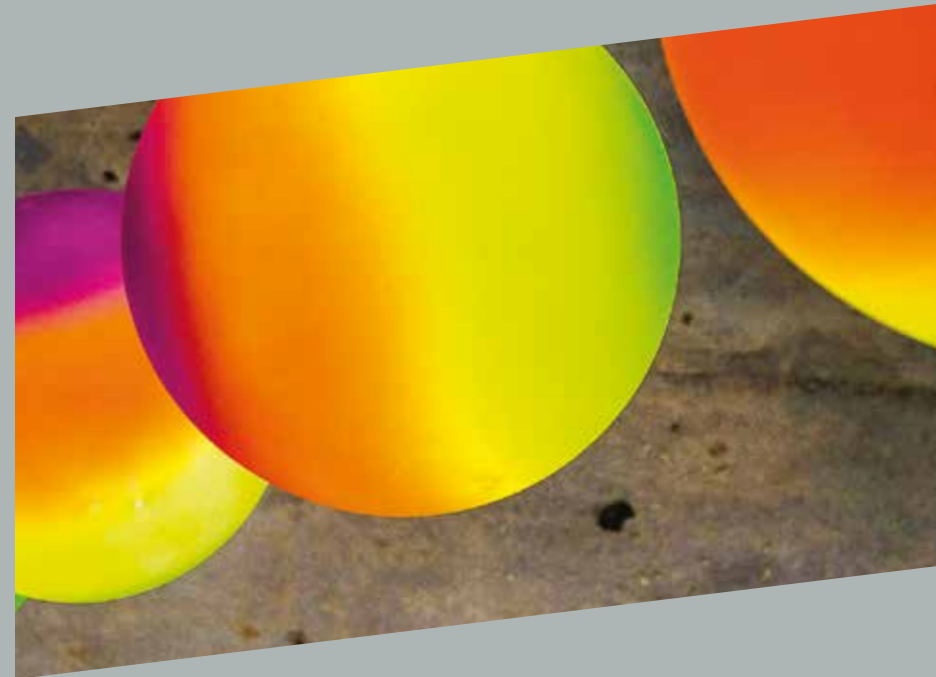


StudyAtGold



Goldsmiths

For other social
media channels visit
gold.ac.uk/connect



We can supply information in
alternative formats for people
with a visual impairment or
dyslexia. Please contact the
Enquiries team:

+44 (0)20 7078 5300

course-info@gold.ac.uk

www.gold.ac.uk/disability



Find out more about studying at Goldsmiths

Check gold.ac.uk/course-finder
for further information about our degrees.

You can also get in touch with our
Enquiries team:

+44 (0)20 7078 5300
course-info@gold.ac.uk

LONDON EYE

SOUTH BANK

TATE MODERN

THE SHARD

LONDON BRIDGE

TOWER BRIDGE

Supermarket

New Cross Gate

Halls

Halls

Halls

Halls

New Cross

GOLDSMITHS CAMPUS

Halls



Goldsmiths, University of London
New Cross, London SE14 6NW
United Kingdom
gold.ac.uk



Where theory meets creativity

At Goldsmiths, there's opportunity around every corner. Our highly regarded courses in the arts, humanities, social sciences and computing are taught by top lecturers in outstanding facilities. You get to mix with pioneering students and renowned academics on one central campus. We encourage you to engage with your subject creatively. We prepare you for a career in the real world, so you graduate capable, adaptable and very employable.