

ACCOMMODATION

GOLDSMITHS, 2019 ENTRY

Our halls of residence

Studying in an exciting city like London is a fantastic experience. It's even better when you know you're living somewhere safe, comfortable and good value.

Students in our halls benefit from:

- Having all utility bills included (except TV licence)
- Basic contents insurance included
- Wifi
- Being less than 30 minutes away from campus

We have a range of affordable options, and our halls are priced very competitively in comparison to other local London universities.

Inside you'll find details of the accommodation we currently offer, and the rent costs for 2019 entry. You can see lots more, including photos of each of the halls of residence, and our email address and phone number, on our website.

Take a look around all our halls at:
gold.ac.uk/accommodation

Home, halls or private housing?

Of course, halls of residence are only one option for accommodation. There is a huge range of alternative housing available – whether you decide to make use of it straight away, or in later years. And the good news is that the areas around Goldsmiths are on the more affordable scale of London housing, and there are lots of student rental opportunities available.

As a Goldsmiths student, you'll also have access to the experts at University of London Housing Services (ULHS), who assist and support students looking for and living in private accommodation. Visit housing.lon.ac.uk to find out more.

At Goldsmiths you will also have access to Campus Support Officers (gold.ac.uk/students/cso) and a dedicated residence life team. They work hard to ensure that, whether you're living in halls, at home or privately renting, everyone can get involved in our lively and friendly campus community.

	HALL NAME AND POSTCODE	Room type	En suite	Bed size*	Average room size m ² **	No. of rooms	No. of weeks	UG	PG	PGCE†	Weekly rate (2019-20)	On site facilities
MANAGED BY GOLDSMITHS	Dean House (SE14 6AT)	En suite Standard		Single	Up to 11	83	40	✓			£147.00	
		En suite Medium		Single	11-14	12	40	✓			£150.00	
	Loring Hall (SE14 6AH)	En suite Standard***		Single	Up to 11	275	40	✓			£169.00*	
		En suite Large***		Single	15	4	40	✓			£177.00*	
HALLS MANAGED BY A PRIVATE PROVIDER	Chapter Lewisham (SE13 7SD)	3 Bedroom Apartment, low/middle floors		Small Double	9	39	42	✓			£198.00	
		En suite Bedroom, middle floors		Small Double	13	20	42	✓			£238.00	
		En suite Bedroom, upper floors		Small Double	13	10	42		✓		£242.00	
		3 Bedroom Apartment, upper floors		Small Double	9	15	51		✓		£199.00	
		Studio, middle floors		Small Double	23-27	8	51	✓	✓		£282.00	
		Studio, upper floors		Small Double	23-27	4	51	✓	✓		£287.00	
	Ewen Henderson Court (SE14 6BL)	En suite Standard UG		Single	13-19	170	40	✓			£179.00	
		Standard 2-Bedroom Apartment (accessible)***		Single	13	4	51		✓		£144.00	
		En suite Standard PG		Single	13-19	86	51		✓		£150.00	
	Quantum Court (E1 ODY)	En suite Medium, 5/6 Bedroom flat		Small Double	12-14	21	40	✓			£199.00	
		En suite Standard, 4 Bedroom flat		Single	12-14	4	40	✓			£202.00	
		En suite Medium, 4 Bedroom flat		Small Double	12-14	32	40	✓			£204.50	
		En suite Standard, 2 Bedroom flat		Single	12-14	2	40	✓			£207.00	
		En suite Medium, 2 Bedroom flat		Small Double	12-14	2	40	✓			£211.00	
		En suite Standard, 1 Bedroom flat		Small Double	12-14	1	51	✓	✓	✓	£230.00	
		En suite Medium, 5/6 Bedroom flat		Small Double	12-14	13	51		✓	✓	£199.00	
		En suite Medium, 4 Bedroom flat		Small Double	12-14	32	51		✓	✓	£204.50	
		En suite Medium, 2 Bedroom flat		Small Double	12-14	4	51		✓	✓	£211.00	
		Studio (accessible)***		Single	TBC	1	51	✓	✓	✓	£212.00	
		Studio		Small Double	TBC	2	51	✓	✓	✓	£212.00	
		Studio Medium		Small Double	TBC	7	51	✓	✓	✓	£216.00	
		Studio Double (single/double occupancy)		Double	TBC	8	51	✓	✓	✓	£226.00	
	Town Hall Camberwell (SE5 8UB)	Standard		Small Double	9-10	15	42	✓			£178.00	
		En suite Standard UG		Small Double	13-14	48	42	✓			£205.00	
		En suite Large (accessible)***		Small Double	28-30	5	42	✓			£216.50	
		En suite Double (single/double occupancy)		King	22-26	3	42	✓	✓		£260.00	
		Standard Plus		Small Double	12-13	6	51		✓	✓	£199.00	
		En suite Standard PG		Small Double	13-14	3	51		✓	✓	£205.00	
En suite Large PG			Small Double	16-22	48	51		✓	✓	£216.50		
En suite Double (single/double occupancy)			King	27-33	8	51		✓	✓	£260.00		
Studio			Double	17-20	10	51	✓	✓	✓	£276.50		
Studio Medium			Double	21-26	7	51	✓	✓	✓	£293.00		
Studio Plus		Double	29	2	51	✓	✓	✓	£318.00			
GOLDSMITHS STUDENT VILLAGE MANAGED BY CAMPUS LIVING VILLAGES	Chesterman House (SE14 6AG)	En suite Standard		Single	TBC	95	51		✓		£193.47	
		En suite Small		Single	TBC	3	42	✓			£179.80	
	Raymont Hall (SE4 2XG)	En suite Standard		Single	TBC	16	42	✓			£185.18	
		En suite Medium UG		Single	TBC	5	42	✓			£190.69	
		En suite Large		Single	TBC	4	42	✓			£199.13	
		En suite New UG		Small Double	12.5-18	24	42	✓			£214.62	
		Studio Double (single/double occupancy)		Small Double	TBC	1	42	✓			£308.61	
		En suite Medium PG		Small Double	10-13	112	51		✓	✓	£190.69	
	Surrey House (SE14 6PB)	En suite New PG		Small Double	10-13	16	51		✓	✓	£214.62	
		Standard		Small Double	10-12	80	42	✓			£144.46	
		En suite Standard		Small Double	10-16	22	42	✓			£193.71	
		En suite New		Small Double	12-13	30	42	✓			£214.62	
		Studio Medium, lower ground		Small Double	28-36	3	42	✓			£221.07	
		Studio		Small Double	17-20	4	42	✓			£242.45	
		Studio Medium		Small Double	26-31	5	42	✓			£244.05	
Studio Double (single/double occupancy)		Small Double	37	1	42	✓			£308.61			
En suite Standard (Annexe)		Single	10-16	48	42	✓			£193.47			

Your own bathroom, Free wifi access, Garden/courtyard/roof terrace, Bike storage, Access to launderette, Social space, Free gym on site

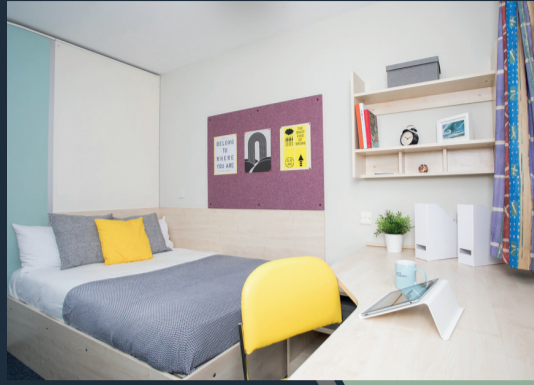
* UK standard bed sizes, single may be a standard/small single. ** The room size shown above is an approximation and includes private bathroom and kitchenette, where these are available. *** Accessible rate available on application. † Loring Hall short-term accommodation for Study Abroad/Erasmus please see variable rates available online. † PGCE rooms and studios, where available, are offered on a 44-week contract.

A £100 advance payment must be paid upon acceptance of your accommodation offer and it will be deducted from your first rent installment (for students allocated to the Goldsmiths Student Village a £200 deposit is due, but no prepayment is required). The information in this document has been supplied to Goldsmiths, University of London in good faith and is to be used for guidance. Although the College has been assured the information is correct at the time of publication (May 2019), our halls provision may be subject to change. Please check our website and portal for the most up-to-date information and refer to the details on your offer of accommodation before you commit to accepting the room.

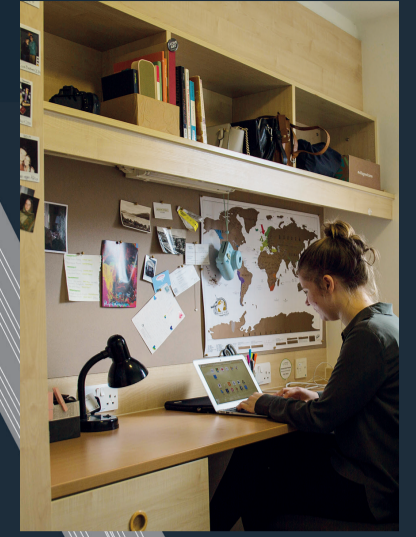
Goldsmiths halls: on campus and beyond



Quantum Court
(20 min by train)



Dean House



Chesterman House



Ewen Henderson Court



Ewen Henderson Court (5-min walk)

Dean House (2-min walk)

Chesterman House (2-min walk)

Loring Hall (on campus)

Richard Hoggart Building

College Green



Surrey House

Surrey House (5-min walk)



Loring Hall



Town Hall Camberwell (15 mins by bus)



Raymont Hall
(20-min walk or 15 mins by bus)



Chapter Lewisham
(10 mins by bus or 25-min walk)