

COUNTLESS
VOCATIONS
INSPIRATIONS
CREATIONS
PROVOCATIONS
EXPERIMENTATIONS
INSTALLATIONS
STIMULATIONS
INVESTIGATIONS
ILLUMINATIONS
MEDITATIONS
INNOVATIONS
COLLABORATIONS
TRANSFORMATIONS
ONE
GOLDSMITHS

Why Goldsmiths?

- 02** Endless innovation, one inspiring legacy
- 12** A world of choice, one life-changing decision
- 18** Thousands of individuals, one supportive community
- 30** Limitless sights, one sensational city
- 38** All of London, one campus
- 46** Untold opportunities, one unforgettable experience
- 58** Countless paths, one destination

Our postgraduate degrees

- 62** Types of postgraduate course
- 64** Degree programmes
- 108** Specialist programmes for international students

Next steps

- 116** How to apply
- 117** Entry requirements
- 119** Fees
- 120** Scholarships and funding
- 122** Visas and immigration
- 123** Index of programmes

-  GoldsmithsLondon
-  StudyAtGold
-  GoldsmithsUoL
-  GoldsmithsUoL
-  GoldsmithsUoL
-  GoldsmithsUoL

- 64** Anthropology
- 66** Art
- 68** Arts Administration & Cultural Policy
- 70** Community Studies
- 72** Computing
- 74** Creative & Cultural Entrepreneurship
- 76** Curating
- 78** Design
- 80** Education
- 82** English & Comparative Literature
- 84** History
- 86** Journalism
- 88** Management
- 90** Media, Communications & Cultural Studies
- 92** Music
- 94** Politics & International Relations
- 96** Psychology
- 98** Social Work
- 100** Sociology
- 102** Theatre & Performance
- 104** Therapeutic Studies
- 106** Visual Cultures

LONDON
EYE



SOUTH
BANK



TATE
MODERN



THE
SHARD



LONDON
BRIDGE



TOWER
BRIDGE



HALLS ↗

← HALLS

New Cross
Gate



HALLS

HALLS



HALLS



New Cross



HALLS



GOLDSMITHS
CAMPUS

HALLS





**ENDLESS
INNOVATION**

Our academic legacy stretches back to 1891, but we are always looking forward. Full of students and staff who are inventive, imaginative and original, Goldsmiths provides an environment where new ideas flourish.

**ONE
INSPIRING
LEGACY**

History. It's all about the past, right? But it's important for the future. A future you can direct, improve, design. A blank canvas for all your challenging theories and ground-breaking ideas.

We've got a reputation where all of that's concerned.

Leaders, believers, creators and debaters - they've all studied here, and they've been inspired to change things, challenge things, and pave the way in all sorts of areas.

Goldsmiths graduates have won Oscars, Turner Prizes and Ivor Novello Awards to name a few. But they also include people you might not have heard about who are passionate about improving society and making a difference - whether that's the social workers connecting with families in local boroughs, the sociologists critiquing the criminal justice system, or the designers suggesting new visions for the future. From the big names to the unsung heroes, and from traditional industries through to markets that don't even exist yet, your time at Goldsmiths will encourage you to engage with the world around you and inspire you to think big.

“At Goldsmiths you definitely feel like you're part of something new, original and innovative.”

David
Postgraduate student



**LET YOUR
IMAGINATION
RUN
RIOT**



Some key moments in our history

Goldsmiths' Technical & Recreative Institute is founded, dedicated to improving the skills and knowledge of the working and artisan classes.



1891

Goldsmiths joins the University of London.

1904

Mary Quant comes to Goldsmiths to study an art diploma course, and later becomes a renowned fashion designer responsible for popularising the mini skirt.



1950

1900



Goldsmiths introduces teacher training programmes.

1940

The Goldsmiths library is damaged by incendiary bombs during World War II. It has since been rebuilt and is now open 24 hours a day, seven days a week nearly every day of the year.

Blur perform their first gig at the Goldsmiths Students' Union.

1989

The Ben Pimlott Building opens, providing fine art studio space and cutting-edge psychology labs.



2005

BMus Popular Music graduates Katy B and James Blake are nominated for the Mercury Prize, with James Blake going on to win in 2013.



2011

The Goldsmiths Prize for literature launches, recognising innovative fiction.



2013

- Bestival comes to Goldsmiths for a celebration of music, arts and culture.
- Goldsmiths announces world-first Queer History Masters.
- A partnership with Curzon brings an on-campus cinema to Goldsmiths.



2016

Goldsmiths Centre for Contemporary Art, a new public gallery for London, is due to open.



2018

Linton Kwesi Johnson, who studied BA Sociology in the 1970s, becomes the first black poet to appear in the Penguin Modern Classics series.

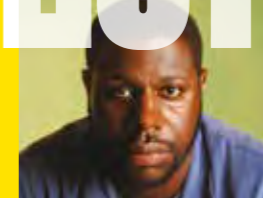
2002

2010



The £20million Professor Stuart Hall Building opens its doors, housing several academic departments and industry-standard media facilities.

2014



Graduate Steve McQueen wins a Best Picture Oscar for his film 12 Years a Slave.

2017

Voted one of the UK's top creative and political universities by students. *Which? University 2017*

Goldsmiths: a close-knit community,
a rich academic heritage, a creative
powerhouse, a thought-provoking place.

“What I love about Goldsmiths is that it’s
a quirky place where I was able to be a
square peg. It never tried to mould me,
it just fitted around my ideas – no matter
how strange they were.”

Rene

MA in Dramaturgy & Writing for Performance

“The teaching staff always supported
students in their efforts to push boundaries
and think about things in original ways,
celebrating unforeseen intersections
between the students’ work, the academy,
and the world outside.”

Jacob

MA in Research Architecture

“The programme gave me guidance,
flexibility, and freedom to initiate projects,
work collaboratively, and take risks.”

Kamal

MA in Photography & Urban Cultures

“I was seeking an environment that could
play a pivotal role in pushing me out of my
comfort zone. Goldsmiths provided me
with an enhanced vision to look at things
from an altogether different perspective.”

Aisha

MFA in Fine Art

Find out more

gold.ac.uk

“Without my tutors and friends from Goldsmiths I couldn’t have tapped into the boundless magic of creativity and found the necessary courage to be my creative self.”

Mylène
MA in Creative & Cultural Entrepreneurship



“The course taught me to try and ‘decentre’ myself from a trained way of thinking, critiquing our own identity and philosophy in order to understand how we got where we are.”

Paul
MA in Postcolonial Culture & Global Policy



**A WORLD
OF CHOICE
ONE
LIFE-CHANGING
DECISION**

Goldsmiths is where the world opens up before you - and invites you to transform it. Immerse yourself in a subject you love, develop your own ideas, and get inspired.

Challenge your old ideas, study a fascinating subject, and see the world differently.

IMMERSE YOURSELF IN A SUBJECT YOU LOVE

At Goldsmiths you can find creative and contemporary postgraduate courses that will challenge you to see the world differently.

Whether you want to explore the forces shaping society or gain the experience you need to pursue a career you're passionate about, you'll look at your subject in fresh ways that will spark your imagination.

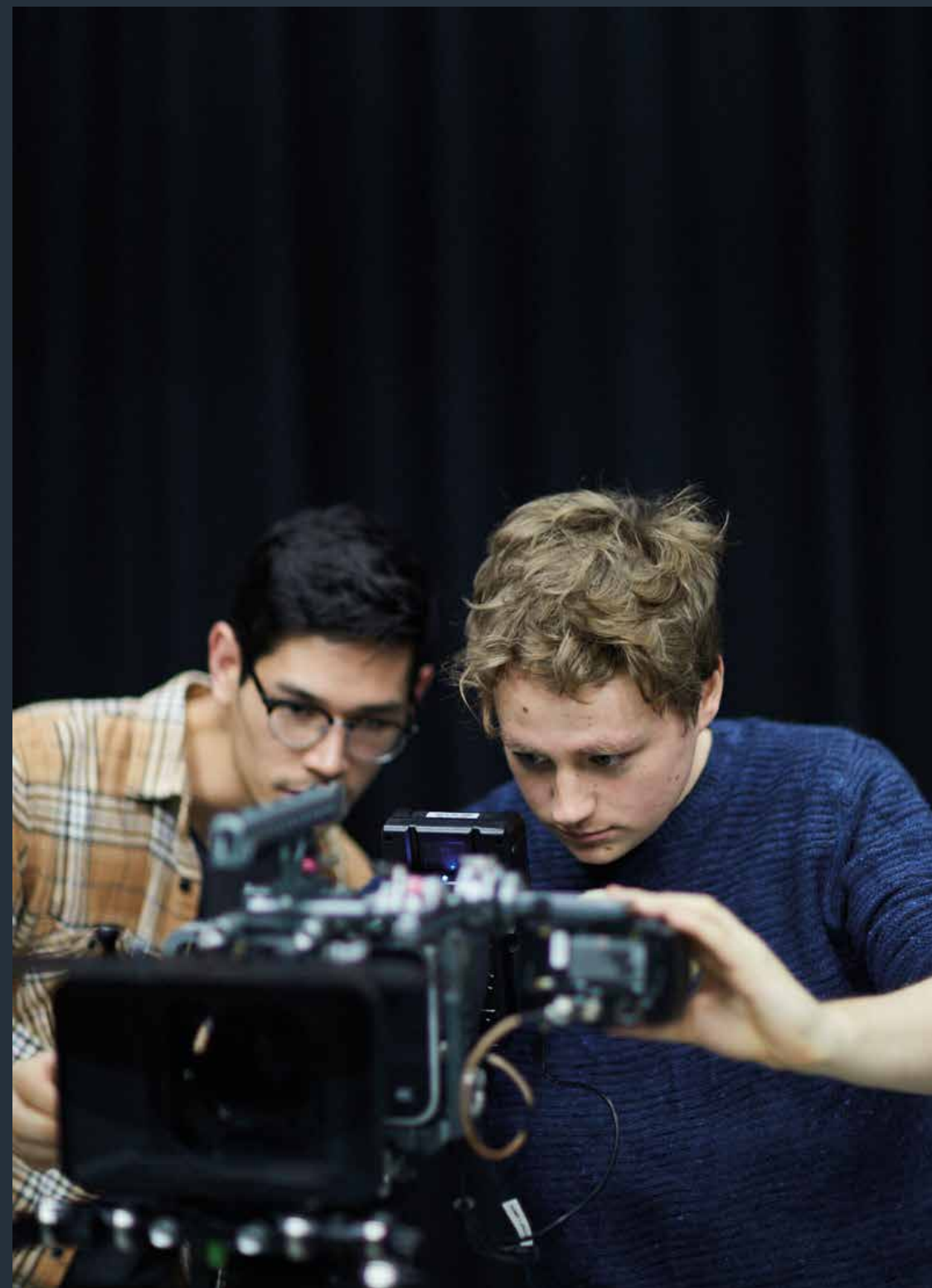
Learn from world-leading minds who've been involved in some of culture and society's defining moments, and from practitioners who have direct connections with the creative, cultural and business sectors.

Many of our degrees are interdisciplinary, so you'll be encouraged to make connections between lots of different subject areas. This will illuminate your studies, and encourage you to view your learning in the context of the wider world.

And we have a fantastic public events programme that covers thought-provoking talks, seminars, recitals and exhibitions. You'll find free events taking place nearly every day on campus - a great way for you to connect with contemporary issues, get inspired, and network.

Find out more

Explore our degrees on pages 64-107 and at gold.ac.uk/course-finder





“My experience at Goldsmiths was so much more than just learning new skills, it changed me on a deeper level. I feel I have grown throughout my training and opened up in ways I never knew were possible. I see my Goldsmiths training as a seed that has been gently planted in me, and I know that that this seed will keep growing throughout my working and life experiences.”

Gema
MA in Dance Movement Psychotherapy



“After years of market-orientated work assignments I found the act of critical and free thinking inspirational, and to my understanding this is the highest aim and long-lasting legacy Goldsmiths could pass on. Goldsmiths gave me the theoretical understanding and confidence to try something new and step off the beaten track.”

Michael
MA in Photography & Urban Cultures

“The friendly atmosphere in the department, as well as its excellent academic reputation, made me decide to come to Goldsmiths.”

Bomiegha
MPhil/PhD in Educational Studies



“It is important now more than ever to interrogate how we construct visual narratives of different cultures, to promote diversity, to challenge the politics and aesthetics of representation in the media and to fight the dangerous othering in our society. The course enabled me to gain a deeper understanding into the complexities of these discourses – it was an enriching and inspiring experience.”

Charlotte
MA in Visual Anthropology





**THOUSANDS
OF
INDIVIDUALS**

**ONE
SUPPORTIVE
COMMUNITY**

Goldsmiths is a meeting ground for the brightest minds. The people who follow their own path and move with the times - sometimes in unexpected directions. And the people who shake things up.

CHANGE THE WORLD AROUND YOU

We teach you how to
think, not what to think.

The people at Goldsmiths make the place. Every day, chance conversations in tutor groups, over coffee or between library shelves can spark life-long friendships, creative adventures or new enterprises.

From inspiring lecturers and tutors to enterprising fellow students, you'll find a buzzing and energetic community of people who want to change things for the better.

Our academics are inventive, progressive and pioneering. They actively teach on our degrees, and they care about getting the best out of you. So you could have a Monday morning seminar with the person who's written the core cultural theory text that's on reading lists across the country, or the professor who's been mentoring sports psychologists for the Paralympic Games.

Students from different cities and countries come with their unique perspectives on everything from the death of privacy to the future of artificial intelligence. It creates an open-minded atmosphere where you have the space to develop and play with your ideas.

And when you graduate from Goldsmiths, your relationship with us doesn't end. You'll become part of a creative and collaborative community of 60,000 former students spanning 140 countries across the globe.



"The major jewels at Goldsmiths were my coursemates, and other fellow students on different programmes. The passion, intelligence, wit, and interests of them all made every day the most interesting day. The diversity in personal and professional backgrounds and interests made the dialogue rich and stimulating, and for that I will be forever grateful to have been able to study at Goldsmiths."

Michelle
MA in Arts Administration
& Cultural Policy





“My personal highlights were the open-mindedness and non-dogmatic approaches from both staff and fellow students as well as the diversity of my cohort (as individuals and in education or professional background).”

Philipp
MA in Social Entrepreneurship

“No matter what your subject area, Goldsmiths will root your study in creativity, innovation, and the pursuit of social change.”

Adrienne
MA Writer/Teacher



“Goldsmiths was simply the best place I could have ever chosen for my postgraduate studies. You can feel the dynamism of the Goldsmiths community everywhere. There is such movement in students working on their artistic projects and collaborating to make new things all the time. Goldsmiths is such a special place because it brings together such a broad scope of disciplines. Psychology, drama, literature, film, fine art, computer science... they all converge in its potential for development thanks to critical thinking and creativity.”

Inés

Postgraduate student in English & Comparative Literature



“Goldsmiths is everything I could have hoped for and more. I chose it because I craved a multicultural experience and London is the perfect city for that. There are 18 people on my course and 10 of us are from outside the UK. It’s the ultimate multicultural experience.”

Njoki

MA in Television Journalism

“Studying at Goldsmiths was a game changer, in a professional and a personal context. Being part of such an international environment and studying a course with a bunch of incredible individuals has changed my entire way of thinking.”

Timm

MA in Political Communications

How can you examine and challenge human rights violations? What's the best way to engage the general public in the contemporary art world? Can you use psychological insight to develop meaningful digital interactions? Our pioneering academics are asking these questions - and many more besides - right now, carrying out work that has a wide-reaching impact on public life, and that encourages people to question the world around them. Here's just a sample of what's happening at Goldsmiths.

A RICH ACADEMIC ENVIRONMENT

Thousands of individuals, one supportive community



Exposing state crimes and human rights violations

The Forensic Architecture research agency, based at Goldsmiths, has received a European Cultural Foundation (ECF) award for inspiring change in the way people shape societies. Forensic Architecture was praised by the ECF for seeing art as a way to expose injustice in communities, and for helping people to recover and rethink the past in order to change the world. The team undertakes historical and theoretical examinations of the history and present status of forensic practices in articulating notions of public truth, paying particular attention to state crimes and human rights violations. They seek to provide new kinds of evidence for international prosecution teams, political organisations, NGOs, and international institutions such as the UN. Forensic Architecture has recently exhibited at the Institute for Contemporary Art in London, and the Museo Universitario Arte Contemporáneo in Mexico City, and has been nominated for the 2018 Turner Prize.

Media academic highlights plight of refugee children

A film made by a Goldsmiths academic highlighting the plight of refugee children was recently used as “cornerstone” evidence in a high court judicial review. Professor Sue Clayton’s work ‘Calais Children: A Case To Answer’ has been submitted as part of a challenge to the Home Office over its treatment of child refugees. The Public Law team at Duncan Lewis Solicitors took up the case after being urged to visit the Jungle by Professor Clayton, who had also helped organise a census of the children living there, which found that up to 2,000 lone youngsters were living amid chaos and danger.





Month-long sound system celebration hits Goldsmiths

A celebration of sound system and vinyl culture was recently held at Goldsmiths. The month-long programme included hands-on workshops on how to build sound systems and the art of toasting, a Strictly Vinyl conference, club nights, and a photography exhibition that shed light on a new generation of UK sound systems and their operators. Professor Julian Henriques, from the Department of Media and Communications, said: "In the midst of the current vinyl 'revival' it is important to recognise the hugely important role that the Jamaican sound system played in turning the domestic record player into a musical instrument in its own right."



Using psychology to direct digital media

Professor of Psychology Jonathan Freeman set up a Goldsmiths spin-off company, i2 media research, in 2002 to apply psychology theory and methods to the optimisation of digital media products and services. This year i2 media was invited to exhibit and present at SXSW (South by Southwest) in Austin, Texas. "From insight into experiences of virtual reality and its relation to understanding consciousness, to understanding why social media is so engaging for some people and the real reasons people engage with different media, nearly every project we engage with has both practical and fundamental considerations and impacts," explains Professor Freeman.



Exhibitions announced for new Goldsmiths gallery

The new Goldsmiths Centre for Contemporary Art (CCA) is due to open to the public this autumn with a solo exhibition by New York-based artist Mika Rottenberg. Subsequent shows will include solo exhibitions of Kris Lemsalu, Alexis Hunter, and a presentation of work by the Chicago Imagists. Goldsmiths CCA will also host talks, performances, films and other events related to its exhibition programme. It will be open to everyone and will also feature programming for young people and communities in the Lewisham area.

Find out more

gold.ac.uk/news



**LIMITLESS
SIGHTS**

**ONE
SENSATIONAL
CITY**

One of the world's greatest cities, connected to the very heart of global industry. Study in dynamic London, meet students from 140 countries, and experience all that the capital has to offer.

ROYAL FESTIVAL

A UNIQUE LONDON EXPERIENCE

London is a special place. A hub for industry, politics, and the arts. A melting pot of creativity and culture. Somewhere that will inspire you, and connect you to Europe and the wider world.

Just like Goldsmiths itself, London is steeped in history but always offers something fresh and new.

Culture

Cultural life is very rich in London, and you could be seeing new plays, visiting art galleries and watching performance poetry every day if you had the energy. If your funds are low there are many places to access for free - from the Science Museum and V&A in Kensington, to the two Tate galleries on the Thames, and from Damien Hirst's Newport Street Gallery in Vauxhall to the Southbank Centre at Waterloo.

Music and nightlife

London is a musical hub, with world-renowned live venues - from the Royal Albert Hall to the Roundhouse, and from the Barbican to Bush Hall, as well as thousands of smaller, more intimate spaces. You're guaranteed to find musical events and club nights to cater to every possible taste.

Enjoying the outdoors

Although Goldsmiths is in inner London, you don't have to spend your time here surrounded by buildings and traffic. The city is full of beautiful parks and opportunities to enjoy the outdoors - and South London is one of the best parts with 34% green space.

Opportunity on your doorstep

One massive advantage of studying in London is the access it can give you to the centre of business and the creative industries in the UK and beyond. Whether you're interested in working in politics, the media, an NGO or the arts, living in the capital brings you closer to the large organisations that influence Britain and the world.



Life in New Cross

Goldsmiths is in New Cross, South-East London. It's the perfect place to have a unique London experience - close enough to easily access the landmarks and nightlife of the bustling city thanks to great transport links, but with enough going on locally to keep you entertained.

It has a rich tradition of creativity, home to emerging musicians, artists and community leaders, as well as a thriving student population.

You'll find a diverse range of restaurants, cafés and shops nearby, including food from around the world - the Caribbean, China, Hungary, India, Korea, Lebanon and Turkey to name just a few places. There's also lots of local nightlife, including pubs, comedy venues and some nearby clubs.

Local neighbourhoods

If you fancy a longer walk or a short trip on the bus or Overground, there are lots of other areas to explore:

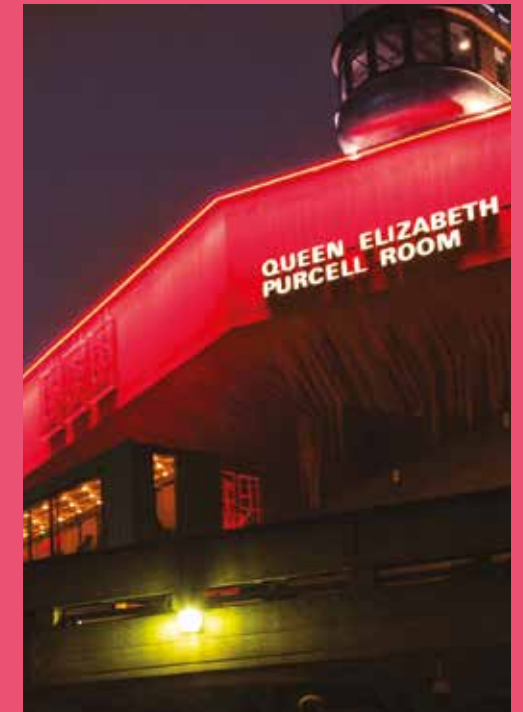
Brockley | Camberwell | Canada Water | Deptford | Forest Hill | Greenwich | Lewisham | Peckham | Shadwell | Shoreditch | Stratford

Find out more

gold.ac.uk/area-guides

**VOTED
THE WORLD'S
BEST
STUDENT CITY**

QS Best Student Cities 2018





“London provided unique scientific, academic, and cultural opportunities that I would not have had elsewhere. I was able to engage with the rich academic context in London and the UK broadly, with opportunities to participate in conferences, workshops, and hands-on research at other institutions. London is an endlessly fun and vibrant city, and a year spent there is an opportunity not to be missed!”

Daniel
MSc in Music, Mind & Brain

“Goldsmiths is a great community that will help you adapt to life in the big city and make you feel like a true Londoner with time. The diversity and inclusiveness here are second to none, enabling students to see multiple perspectives and broaden their horizons.”

Dan
MA in Creative & Cultural Entrepreneurship







**ALL OF
LONDON**

**ONE
CAMPUS**

At Goldsmiths, nearly all of our teaching, learning and support facilities are in one place. It creates a close-knit community feel, where you'll soon be bumping into friends in corridors, and lecturers in coffee shops.

OUR SINGLE SITE, CLOSE-KNIT CAMPUS

Imagine a campus university, but in one of the world's most exciting cities. That's us.

Goldsmiths is in New Cross, which is in London's zone 2. It's less than 10 minutes by train to central London and East London, so you're close to all of the world-renowned museums, theatres, galleries and music venues it holds.

But you also get to enjoy the friendliness and convenience of a single-site campus. It's where your lectures and seminars take place, and it's where you can access important facilities like the Library and Careers Service. The only exception is MFA students in the Department of Art, whose studio space is currently based in nearby Deptford.

The campus is a bustling place: wander through the corridors and you'll hear music students practising their scales, you'll see curating students installing exhibitions, and you'll get a sense of the thriving intellectual community by noticing adverts for the latest events taking place around campus on a regular basis.



Campus highlights:

- Thirty Five, the newest café on campus
- Fitness centre ClubPulse, filled with cardio machines, a strength zone, training rig and a fitness studio with over 40 classes a week
- The College Green, the perfect spot to enjoy a summer's day
- Professor Stuart Hall Building first floor - take a seat, catch up with friends, and enjoy the view
- Curzon Goldsmiths, our on-campus cinema, screening the latest cinematic releases during evenings and at weekends
- Students' Union Shop - to pick up stationery, art supplies, or a revision snack
- Laurie Grove Baths - one of three Grade II listed buildings on our campus, this former Victorian swimming baths is now home to art studios and exhibition space

Find out more

gold.ac.uk/life-on-campus



STUDENTS' UNION

At the heart of our inspiring student community is the Students' Union (SU). Run for students and by students, it's a place to try something new, get immersed in the Goldsmiths community, and be inspired to change the world around you.

You could:

- Join a community of like-minded postgraduates, who regularly meet for networking and social events, including postgraduate-themed coffee breaks
- Develop skills and meet new people by joining some of the 100+ sports clubs and societies, spanning everything from tech and dance to cultural groups and competitive sport
- Host a radio show, write for the award-winning magazine, or join the filmmaking group
- Campaign on an issue that's close to your heart and make positive changes at Goldsmiths or in the wider world
- Socialise in the SU bar or café, and go to events including club nights, live music, quizzes, film screenings, performances and debates
- Get involved in your academic community by representing the educational interests of students on your course, ensuring you have the best time possible at Goldsmiths, and get the most from your degree



“Goldsmiths is a warm, supportive and inclusive community. I have developed many authentic friendships and a better version of myself.”

Gloria
MA in Arts Administration
& Cultural Policy



“Goldsmiths is vast and yet I feel very much at home and part of the family. The campus is a lively and friendly place. It has been the most incredible few years of my life surrounded by supportive peers and tutors – extraordinarily challenging, but also rewarding.”

Helen
MA in Dance Movement Psychotherapy

“Studying at Goldsmiths was an invaluable experience: I met so many diverse, intelligent, creative students and colleagues, and professional and experienced tutors who I thank for inspiring me to learn for life. The people I met and relationships I created during my years here led me to further professional journeys, which I feel passionate, excited and proud about.”

Gabriele
MA in Dance Movement Psychotherapy



**UNTOLD
OPPORTUNITIES**

**ONE
UNFORGETTABLE
EXPERIENCE!**

Make the most of all the opportunities available to you - from professional careers advice and networking events through to enhancing your study skills and making friends for life.



YOUR FUTURE CAREER

From the moment you arrive at Goldsmiths, we want you to start thinking about your future so that you can make the most of all the opportunities available to you. Whether you're already passionate about a particular field, or keen to keep an open mind about where postgraduate study will take you, we can help illuminate all the different paths your future could take.

Goldsmiths Careers Service

Our Careers Service can give you professional careers advice from the very start of your studies. They're part of The Careers Group, University of London - recognised as an international centre of excellence and the largest higher education careers service in Europe. They can also provide support including appointments with dedicated careers consultants, CV checks, and practice interviews, and have resources where you can search for jobs and internship opportunities.

Industry links

We run regular careers fairs, networking events and industry panels where you can hear from professionals working in sectors like publishing, the media, charities and NGOs, and the arts. Many Goldsmiths graduates return to take part in these industry events. And if you're studying a practical degree you'll be supported by technicians and practitioners who have direct connections and extensive experience in areas like filmmaking, music and theatre.

Work placements

Not only do placements help you develop skills and gain experience of the working environment, they're also great for increasing confidence and helping you build a network of useful contacts. Many of our degrees offer the possibility of an integrated work placement, and you can also access placements through the Careers Service.

Students have recently completed placements at the British Red Cross, Google and The Wall Street Journal. International students have work placement restrictions (see page 121), but our Immigration Advisory Service will be able to advise you on what is possible within the terms of your visa. Find out more at gold.ac.uk/immigration

Expanding your professional network

Make use of Goldsmiths Connect, our online platform that puts you in touch with students, staff and alumni all over the world. It's somewhere you can ask for careers advice, develop collaborations, or even find a mentor.

Support for international students

We run events on finding work and applying for a visa after you graduate. Goldsmiths also takes part in the Tier 1 Graduate Entrepreneur visa scheme, which allows our graduates to compete to develop a genuine and credible business idea with dedicated business support for up to 24 months.

40%

of postgraduate students had the opportunity to take a placement module or professional training placement in 2017-18

9/10

of Goldsmiths students progress to work or further study when they graduate
Destinations of Leavers from Higher Education (DLHE) 2015/16 (based on postgraduate taught student respondents surveyed six months after graduation)

Some of the top employers of our graduates include:

NHS

TATE

BBC

APPLE

Find out more
gold.ac.uk/skills-careers

Seeing the world: international opportunities

Fancy taking your studies overseas for a term or gaining international work experience during your time at university? There are a number of opportunities available for you to study or work abroad during your time at Goldsmiths and we have a team in place to help you along the way. International experience gives you the chance to live in another country, make new friends, and develop your academic and employability skills.

At postgraduate level we currently have study exchange agreements with the following institutions:

Anthropology (PhD)

University of Warsaw, Poland

Computing (PhD)

University Pierre and Marie Curie, France

Design (PhD)

Technische Universität München, Germany

English & Comparative Literature (Masters & PhD)

Humboldt University Berlin, Germany

University of Trento, Italy

English & Comparative Literature (PhD)

University of Malta

University of Vienna

Media & Communications (PhD)

Freie Universität Berlin, Germany

University of Milan, Italy

University of Naples L'Orientale, Italy

Politics (PhD)

Roskilde University, Denmark

Psychology (Masters & PhD)

KU Leuven, Belgium

Pázmány Péter Catholic University, Hungary

Sociology (Masters)

University of Milan, Italy

Sociology (PhD)

Humboldt University Berlin, Germany

Theatre & Performance (Masters & PhD)

University of Peloponnese, Greece

Visual Cultures (Masters & PhD)

Humboldt University Berlin, Germany

Find out more

gold.ac.uk/study-abroad-and-exchanges



“Being at Goldsmiths was a very inspiring time, not only because of the course content, but also because of being in a class full of (aspiring) change makers from all over the world. It helped me immensely to build my global network.”

Melanie

MA in Social Entrepreneurship

“The networks developed with colleagues when working so intensely in this dedicated environment are lasting, and set each one of us in good stead for future collaborations as we each migrate from academic to professional environments.”

Steph

MFA in Computational Arts



“Since leaving Goldsmiths, I have been really lucky to both continue projects worked on during my MA and to start new work experiences. I am a co-founder of an entrepreneurial creative agency called NX Creative Lab. This project was started during our time at Goldsmiths and really epitomises what studying at Goldsmiths meant to me – making friends and meeting future business partners all while learning valuable skills. The university has continued to support this project since we graduated, which demonstrates how much Goldsmiths values their students and alumni.”

Courtney

MA in Creative & Cultural Entrepreneurship

“My MA introduced me to such a broad range of industry professionals. Those contacts, along with the academic learning from the course, still inform my practice today – some 15 years later!”

Adrian

MA in Arts Administration & Cultural Policy

FACILITIES TO ENHANCE YOUR LEARNING

Our learning facilities are on our single-site campus, so you don't have to travel far to access them. But being part of the University of London means you'll also be able to make use of all the additional resources that offers.

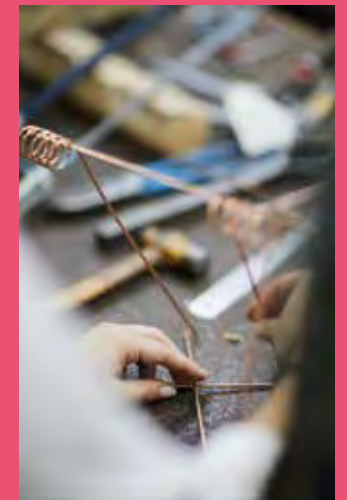
Library

Open 24 hours a day, seven days a week nearly every day of the year, the Library has space for individual and group study. You can access reading and audio-visual materials relating to the modules you study, and benefit from workshops and one-to-one sessions where you can learn more about skills like academic writing, referencing and research techniques. If you have any questions about finding what you need, your subject librarian will be happy to help.



IT

There are PCs and Macs inside the Library and around campus, with academic and course-specific software that you can use for researching and completing your assignments, and for accessing your Goldsmiths email account and shared files. You'll also be able to connect to learn.gold, the Virtual Learning Environment (VLE) where you can find resources relevant to your degree. We have an Assistive Technology Centre, which has assisted learning software specifically for students with learning disabilities. You'll also find a Digital Media Suite where you can use machines with specialist video- and audio-editing software, and there's a help desk open seven days a week to support you with any IT queries you might have.



Wifi

You can connect to our wifi network, eduroam, from anywhere on campus. Eduroam is an international roaming service, so you can access it from many other universities in the UK or overseas.

Equipment loans

You can borrow audio-visual equipment like cameras, projectors, lighting and adapters on a short-term basis.

Print Services

Need to print your coursework, materials for an event, or business cards? Our in-house Print Services unit offers digital printing and finishing - perfect for producing your creative work.

Department facilities

Many of our practice-based departments have their own facilities, from labs and workshops to a theatre and TV studio. Find out more on pages 64-107.

University of London

As a Goldsmiths student, you benefit from being part of the University of London - the third oldest university in England. This means you'll be able to use Senate House Library, giving you access to millions of books, journals and digital resources, and beautiful study spaces in the centre of London.

Find out more

gold.ac.uk/facilities

SUPPORTING YOU THROUGH YOUR STUDIES

We're here to give you all the help and guidance you need while you're studying with us - from the first moments you're here, right through to graduation and beyond.

Welcome Week

Every September there's a week packed full of welcome and induction events for new students. From campus and local area tours to meet-and-greets, they are all designed to help you get to grips with university life and make friends.

The Student Centre

There's a Student Centre where you can access help with all aspects of being a student at Goldsmiths - whether that's enrolments, fees, housing, or assessments. You can also access:

- Wellbeing services - if you have any personal issues affecting study, mental health difficulties, or extenuating circumstances
- Counselling - a confidential service that aims to help build your resources so you can achieve your academic and personal potential
- Disability Service - if you have a disability, long-term medical condition, specific learning difficulties such as dyslexia, or mental health difficulties, the Disability Service can help arrange support and put adjustments in place



Workshops and support groups

Want to find your voice in groups and seminars? Suffering from anxiety? Keen to learn more about mindfulness? We run workshops and support groups throughout the year where you can reflect on issues or concerns you may have, and focus on areas in which you may want to develop your skills and understanding.

Enhancing your academic skills

There are regular workshops and one-to-one sessions run by our Academic Skills Centre, giving you the opportunity to develop your skills in areas like researching, essay writing, presenting, exam revision, dissertation planning and time management. You can also book an appointment with one of our resident Royal Literary Fellows - professional writers who can help you improve your essay-writing skills.

Developing your English language

We offer in-session academic language development courses for students enrolled on Goldsmiths degrees who don't speak English as their first language. The courses, offered by the English Language Centre, will help you develop English language skills related to your area of study, and improve your understanding of the conventions of academic writing and presentation style.

“You won't often have an experience like studying at Goldsmiths in your lifetime. It changed me deeply. It helped me to find my inner strength, power and vulnerability. It helped me to find my voice.”

Johanna

MA in Dance Movement Psychotherapy

Immigration Advisory Service (IAS)

The IAS provides help and advice to all new and existing international students, from help with applying for your visa to study with us, through to advice about working during or after your studies. They can also help you if you have any problems with your visa during or before your studies. Find out more on page 122.

Healthcare

If you are living in New Cross and the nearby areas you will be in the Lewisham and Greenwich healthcare trust and can register with a GP (General Practitioner) near Goldsmiths.

Chaplaincy

There's a Chaplaincy Centre on campus where anyone is welcome to drop in during opening hours if they'd like to be in a quiet space. The Chaplaincy is a multi-faith team available for everyone, regardless of religious beliefs or practices.

Out-of-hours support

Campus Support Officers can provide support from 6pm to 6am seven days a week. Whether you're stressing over an essay, have concerns about a friend or you're just having 'one of those days', you can drop by for a cup of tea and a friendly chat.

Alumni benefits

When you graduate from Goldsmiths, your relationship with us doesn't end. You'll join a creative and collaborative community of 60,000 former students, spanning 140 countries. There are reunion events and alumni groups you can join, and new graduates continue to receive free professional careers advice and access to the Library for three years after they've left Goldsmiths.

Find out more

gold.ac.uk/students/studying

ACCOMMODATION

Studying in an exciting city like London is an unbeatable experience. And it's even better when you know you're living somewhere safe, convenient and affordable.

We have a range of accommodation options - whether you prefer halls of residence on or near campus, or more independent living that lets you mix with a wider London student population. Our Residence Life team help ensure that whether you're living in halls or at home, everyone can get involved in our lively and friendly campus community.

Halls of residence

There are around 1,500 rooms available in halls of residence - many are in New Cross, while others are a short commute away and allow you to live in a different part of London. Accommodation is self-catered, and generally made up of single-occupancy bedrooms with a shared kitchen. Some self-contained studio flats and accommodation for couples is also available. Halls of residence are either managed by Goldsmiths or in partnership with a private provider.

Rent includes all electricity, water and gas bills, basic possessions insurance and internet access. For 2018 the weekly rent ranged from:

- £118-£251 (for rooms with shared and en suite facilities)
- £267-£318 (for studio rooms with private facilities)

Residents have access to security staff and office teams to provide a safe and secure living environment.

We guarantee a place in halls to all international students in their first year (subject to meeting deadlines).

Privately rented homes

Renting privately is a good option if you're keen to maintain your independence, because you can decide where you live and who you share with. New Cross is a transport hub, so if you decide to rent here you'll not only be close to Goldsmiths but also well connected to other parts of the capital. Some of the areas favoured by Goldsmiths students renting privately include Brockley, Greenwich, Lewisham and Peckham in South-East London. These areas are on the more affordable scale of London housing. As a Goldsmiths student you'll have access to the University of London Housing Services' database of private housing, with lists of flats and rooms available to rent. If you're an international student, some landlords may ask for visa details as part of the renting process. Our Immigration Advisory Service (page 55) can help you if you experience any issues with this process.

University-managed housing

Accommodation can also be found and managed for you by the University of London Student Housing Team. This means you can live independently with the reassurance of having the University of London as your property manager.

Please note that the map to the right reflects our halls of residence at the time of going to print, but the housing stock can change year to year. Visit our website for the most up-to-date information about our halls.

Find out more
gold.ac.uk/accommodation



COUNTLESS
PATHS

ONE

DESTINATION

Wherever you are in the world,
there are many routes for
exploring more about Goldsmiths.

VISIT

Open days

Visiting the campus is the perfect way to experience the friendly atmosphere and to find out more about the exciting things that happen here. You can chat to staff, take a tour, and attend talks and sample lectures.

gold.ac.uk/open-days

21 NOV

Our next Postgraduate Open Evening takes place on Wednesday 21 November 4pm-7pm. You can book your place on our website.

Campus tours

Take a look around Goldsmiths and the local area on a campus tour led by a current student.

gold.ac.uk/campus-tours

Events

Music recitals, degree shows and other lively and inspirational public events take place almost every day at Goldsmiths, and most of them are completely free. Check our online events calendar to find out what's happening.

gold.ac.uk/events

Applicant events

If you apply and are offered a place, you'll be invited to an applicant event where you'll find out more about your degree and the research culture at Goldsmiths, and have the chance to meet people in your department.

MEET

We visit postgraduate exhibitions and fairs all over the UK and beyond, so it's possible to come and speak directly to staff who'll be able to tell you more about our degrees and answer any questions you have. Search UK-based postgraduate fairs online, or find out when our EU and international teams are visiting a city near you at gold.ac.uk/eu/events and gold.ac.uk/international/regions/visits



“The atmosphere in Goldsmiths is eclectic, creative, personal and easy-going, and the staff are dedicated and interesting people.”

Ciara
MSc in Cognitive & Clinical Neuroscience

EXPLORE

Virtual open days

If you can't make it to campus, you can explore Goldsmiths via our virtual open days. You can also register for one of our regular web chats, where you can chat to staff and students.

gold.ac.uk/open-days/virtual

Social media

Follow us on our social channels to keep up-to-date with what's happening at Goldsmiths, and to find out more about the student experience.

- GoldsmithsLondon
- StudyAtGold
- GoldsmithsUoL
- GoldsmithsUoL
- GoldsmithsUoL
- GoldsmithsUoL

CONTACT

If you have any questions about a particular programme you can find the convenor's details on programme pages on our website:

gold.ac.uk/course-finder

If you're thinking of studying a research degree you can explore our research centres and areas of academic expertise:

gold.ac.uk/departments

You can also get in touch with our Enquiries team:

+44 (0)20 7078 5300
course-info@gold.ac.uk

“After seeing the fine art degree shows and visiting the university I felt that Goldsmiths was the best place to challenge and rethink my ways of making.”

Joey
MFA in Fine Art

“One visit to Goldsmiths had me hooked. On the MA, classes were engaging, inclusive and stimulating; tutors were interesting, informed and supportive; and fellow students were diverse, interesting and, well, just very likeable.”

Sally
MA in Sociocultural Linguistics

TYPES OF POSTGRADUATE COURSE

TAUGHT MASTERS DEGREES

We offer the following Masters degrees at Goldsmiths:

- MA - Master of Arts
- MFA - Master of Fine Arts
- MMus - Master of Music
- MSc - Master of Science

Masters degrees are taught courses that usually last 12 months (full-time). Exceptions are our MFA programmes and our MA in Art Psychotherapy, MA in Dance Movement Psychotherapy (page 105) and MA in Design: Expanded Practice (page 79).

Masters degrees often culminate in a research project or dissertation, which can form the basis for further study such as a PhD.

RESEARCH DEGREES

Research Masters (MPhil, MRes)

These courses will encourage you to think independently and produce original material.

An MRes (Master of Research) is similar to an MPhil but also includes specialist training in research skills. It's often associated with the social sciences and is primarily a taught programme. The MRes usually lasts for one year (full-time).

An MPhil (Master of Philosophy) is usually a precursor to a PhD (Doctor of Philosophy): you register for the MPhil and if your work is suitable you can be 'upgraded' to a PhD programme.

PhD

A PhD (or 'doctorate') is a research degree, and is the standard requirement for anyone who wants to become a researcher or an academic.

It consists of a research project and a substantial thesis, which is guided by at least two supervisors. Full-time PhD students must complete their thesis before the end of four years of registration (including the 'writing up' year). For part-time students the corresponding period is eight years.

STUDYING AN MPhil/PHD

Graduate study at Goldsmiths is a transformative experience that will prepare you for leadership and innovation in your chosen field. We have around 600 research students, and community and collaboration are vital to the research experience here.

Induction programme

In addition to the Goldsmiths-wide welcome programme (page 54), the Graduate School (see right) organises a three-day induction at the start of term. Your academic department will also arrange an introduction to their facilities and any additional support you might need.

The structure of your research degree

You will have a main supervisor and a second supervisor. During your first three months at Goldsmiths your supervisors will help you draw up a research plan and set detailed objectives for your first year. They will also be available to offer advice and suggestions as the project evolves, and you'll receive regular one-to-one tutorials.

Throughout your programme you'll progress with your independent learning, but there are also lots of training and professional development opportunities that you can access. And each year you'll complete an annual progress report to reflect on how your research is developing.

You should aim to complete and submit your thesis within the allowed period for a PhD (four years full-time; eight years part-time). You'll be assessed on your thesis (which may contain a practical component depending on your research), and on an oral examination (viva voce).

Upgrading from MPhil to PhD registration

You'll usually begin your research degree by registering as an MPhil/PhD student. To complete a PhD you must upgrade to PhD registration after completing an agreed part of the research and training programme. For full-time students you must upgrade before 24 months (ideally earlier). For part-time students this must happen by 48 months.

Upgrading is a major milestone in your progress. It's also an opportunity to experience a viva voce on your work, which is valuable practice for your PhD viva later. If you are unable to upgrade to PhD registration you may be able to submit a shorter thesis for an MPhil qualification.

Training opportunities

During your PhD you'll undertake training to develop your research skills and techniques. Some of this training will be through your supervision, while some departments organise discipline-specific seminars and training courses. In addition, the Graduate School (see below) offers training in core research methods.

We also support you in thinking about how to plan for life after your PhD, and offer courses for early career researchers and for anyone who is planning to become an academic.

Graduate School

Doctoral and graduate research is immensely rewarding. It requires innovation, drive and, at times, endurance. The Goldsmiths Graduate School can support you throughout this journey.

The Graduate School acts as your advocate within Goldsmiths, giving you advice and direction if you need it, and providing dedicated research facilities and training to make sure you're well equipped for the challenges of graduate research. It also offers funds to enable you to attend conferences and/or conduct research at other institutions, and to develop your own conferences and events at Goldsmiths.

The Graduate School organises a series of seminars and practical sessions that foreground key areas relevant to postgraduate research students, both in early stages and as they approach the latter stages of their PhD careers. These take place once a month during term-time, and are open to all MPhil/PhD students.

As a member of an institute of the University of London, you can also access the research events at the 10 Institutes of the School of Advanced Studies. Find out more at sas.ac.uk.

Find out more

gold.ac.uk/graduate-school

Anthropology

Study anthropology in a lively and politically conscious department, where staff are active researchers, committed to publicly engaged anthropology across the world - from London to Ladakh.

“At Goldsmiths I was encouraged to pursue and develop my academic background in political economy and refine it through the lens of anthropological thinking. The many-sidedness of the programme also offered the opportunity to explore my visual practice from an academic angle. I have been infused with a great variety of challenging approaches and research material that I can draw on in the years to come.”

Wasil
MA in Anthropology
& Cultural Politics

Key facts

Choose between contemporary Masters degrees that cover diverse areas from social and visual anthropology to community development and museum practice. Several of our MAs include placement opportunities, giving you the chance to put your learning into practice in a professional setting.

Learn in a stimulating environment. Staff research infuses teaching, and you'll get the chance to attend seminars, talks and screenings in anthropology, documentary and the visual arts via our dedicated visual anthropology centre. And because Goldsmiths has a thriving international community, you'll get to study with a global mix of students, providing a rich range of anthropological perspectives.

You'll be able to access a wide variety of research areas including regional and subject specialisms, and you'll get to learn anthropological theory as well as research methods. Our wide range of option modules means that you could opt to explore broader questions of ideology, power, and global political economy.

Career inspiration

Our graduates have gone on to work for the United Nations, Amnesty International, the World Bank, charities, NGOs (non-governmental organisations) and CSR (corporate social responsibility) consultancies.

Find out more
gold.ac.uk/anthropology



For the latest department news, read our blog at
sites.gold.ac.uk/anthropology

Taught programmes

MA in Anthropology & Cultural Politics

MA in Anthropology & Museum Practice

MA in Applied Anthropology & Community & Youth Work

MA in Applied Anthropology & Community Arts

MA in Applied Anthropology & Community Development

MA in Migration & Mobility

MA in Social Anthropology

MA in Visual Anthropology

Research programmes

MRes in Anthropology

MRes in Visual Anthropology

MPhil & PhD in Anthropology

MPhil & PhD in Visual Anthropology

Check programme pages on our website for entry requirements; see pages 117-118 for more information

6TH
in the UK for
research intensity
Research Excellence
Framework 2014
(based on research quality
scores in the Times Higher
Education subject rankings)

Professional links



MA in Applied Anthropology
& Community & Youth Work



MA in Anthropology
& Museum Practice delivered
in partnership with The
Horniman Museum & Gardens

Art

The Department of Art specialises in making, curating and writing about contemporary art in a dynamic, critical and interdisciplinary environment. We count among our alumni some of the most influential and successful artists working today. This includes 28 nominees and seven winners of the Turner Prize, and winners of a host of other awards.

“Goldsmiths introduced me to the idea of criticality (not to be confused with the act of merely being critical). It has provided me with a structure and compass with which to sustain my practice in a meaningful way. Goldsmiths made it possible to ask more pertinent questions whilst at the same time making me aware of being part of a bigger interdisciplinary picture.”

Juan
MFA in Fine Art

Key facts

We work with a network of highly accomplished artists, curators, galleries and museums to create an inspiring environment in which you can study and develop your own independent fine art practice.

You'll benefit from excellent technical facilities. Our art practice areas provide the highest quality equipment and training in a wide range of technical areas, including digital media, photography, printing, textiles, woodwork, casting, metals and ceramics. We provide space for artists, and spaces for performance work, temporary projects and exhibitions. The MFA programmes are located in a dedicated postgraduate centre for the study of contemporary art in Deptford, 10 minutes' walk from the main Goldsmiths campus.

The department is actively engaged with London's world-leading professional art scene, and our location provides the opportunity to make the best possible use of the capital's resources, including a diverse range of exhibitions and events. We are opening an important new public art gallery on campus - Goldsmiths Centre for Contemporary Art - which will launch with an amazing programme of contemporary art exhibitions, performances, films, talks and events in autumn 2018 (see page 29).

Facilities

Studio space | Research labs for casting, constructed textiles, fine art printmaking, 3D printing, media research, metal, photography, print and dye, stitch and fabric, woodwork



12TH
in the world
for art
QS World University
Rankings by
Subject 2018



Career inspiration

Our graduates progress to all kinds of careers: many are successful and award-winning artists, while others are working as curators, video and media practitioners, writers and academics. We are establishing a dedicated professional development programme within our postgraduate programmes that will reinforce the already very strong reputation an MFA in Fine Art or Artists' Film affords our graduates' prospects.

Find out more
gold.ac.uk/art

Taught programmes

MA in Artists' Film & Moving Image

MFA in Fine Art

Research programmes

MPhil & PhD in Art

Check programme pages on our website for entry requirements; see pages 117-118 for more information

You may also be interested in

Curating degrees, page 77

MFA in Computational Arts, page 73

Arts Administration & Cultural Policy

Engage with the key issues in the formulation of arts and cultural policy, and the administration of the arts. You'll have the opportunity to forge an international network of colleagues and develop your future career.

"I absolutely loved my time at Goldsmiths. The curriculum was engaging, inspiring and eye-opening, but best of all I got to study alongside brilliant like-minded people from all over the world. The degree was the ideal stepping stone to starting my career in the arts in the UK."

Jana
MA in Arts Administration & Cultural Policy

Key facts

You'll be taught by experienced staff from the Institute for Creative and Cultural Entrepreneurship (ICCE), and by practitioners from many companies, venues and national organisations, providing a direct link with the cultural professions.

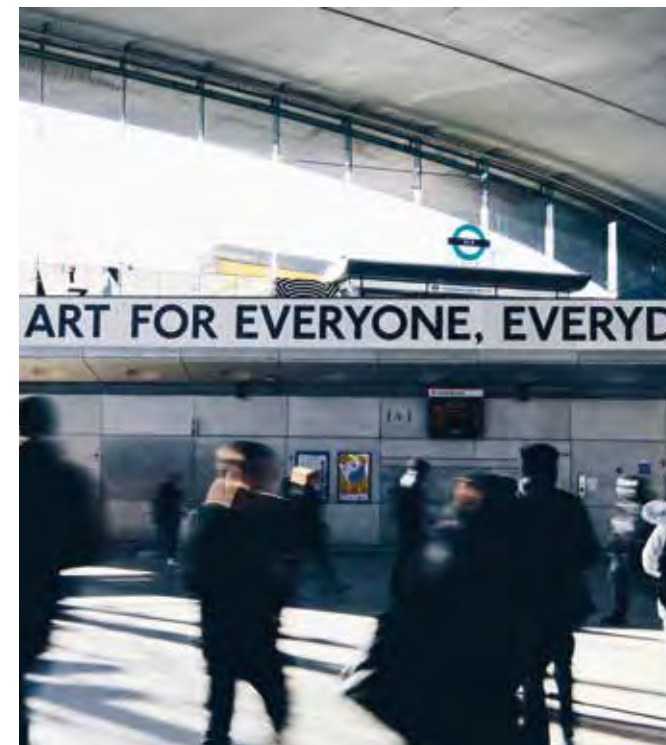
You'll get to learn in a rich international context. Many of our students come from overseas, providing valuable personal perspectives on arts administration and cultural policy in their home countries, which enhances the learning experience for everyone.

Being a global leader in the arts and one of the most important cultural centres in the world, London is the perfect place to study these subjects - whether that's through providing examples of cultural or event-led regeneration and tourism, connecting you with arts organisations, or helping you to develop an inspiring professional network for your future.

Career inspiration

Our graduates are working in the UK and across the world in senior positions in arts and culture, in major venues and organisations, and for governments. They're working at institutions including English National Ballet, Royal Society of Literature, Musée d'Orsay and Asia University Museum of Modern Art. Find out more at gold.ac.uk/icce/alumni-profiles.

Find out more
gold.ac.uk/icce



On the MA in Arts Administration and Cultural Policy you'll have the opportunity to take a placement with an arts organisation.

Taught programmes

MA in Arts Administration & Cultural Policy

MA in Cultural Policy, Relations & Diplomacy

MA in Tourism & Cultural Policy

Check programme pages on our website for entry requirements; see pages 117-118 for more information

Research programmes

MPhil & PhD in the Institute for Creative & Cultural Entrepreneurship

You may also be interested in

Creative and cultural entrepreneurship degrees, page 75
MA in Arts Administration & Cultural Policy: Music Pathway, page 93

Community Studies

In the 21st century, communities have to think creatively to deal with the challenges they face. Through academic theory and practical fieldwork, you'll learn about the root of some of these challenges, along with inventive approaches for tackling discrimination and oppression.

“Studying at Goldsmiths gave me the unique opportunity to reflect on my practice and values whilst also recognising the need to navigate around the complicated youth work policy landscape. Our lecturers and tutors encouraged creative thought, challenged our intrinsic beliefs, and supported us to develop holistically as practitioners. No suggestion or question was insignificant, and none was too profound – each interaction gave room for us to critique our understanding of the sector that we were so passionate about.”

Roxi
MA in Applied Anthropology & Community & Youth Work

Key facts

You'll learn about key concepts relevant to community development - from gender and race to class and culture - along with more specific contemporary social issues like gentrification, transnationalism and mental health. You'll also develop anthropological research methods, enabling you to study communities by using techniques like surveys, in-depth interviews and participant observation.

You'll also undertake three placements in at least two different organisations, enabling you to learn through experience, and reflect on your own values and professional practice. And you'll develop a critical understanding of managing projects, staff and resources, how to prepare budgets and funding bids, and how to monitor and evaluate projects.

Our multicultural and collaborative learning environment encourages mutual respect and understanding, and values every student's individual contribution and perspective.

Career inspiration

Our former students have gone on to set up arts and community development projects, manage youth services, and become community artists and musicians. Some examples of recent graduate employment include: health youth worker for a London borough, leading on LGBTQ awareness; community development worker in a social work team in Hong Kong; mentor and befriending coordinator at a civil society equalities organisation.



We offer research opportunities in community and youth work, and in faith-based social action, religion and society.

Accreditation



MA in Applied Anthropology & Community & Youth Work



All Masters degrees

Find out more
gold.ac.uk/community-studies

Taught programmes

MA in Applied Anthropology & Community Arts

MA in Applied Anthropology & Community Development

MA in Applied Anthropology & Community & Youth Work

Research programmes

MPhil & PhD in Community & Youth Work

MPhil & PhD in Religious Studies

Check programme pages on our website for entry requirements; see pages 117-118 for more information

Computing

At Goldsmiths you'll find a special approach to computing. From developing computer systems that compose music and build virtual environments, to defining and implementing new social media tools, computing here is creative and innovative. You'll be encouraged to take a fresh approach to the subject and use it to invigorate the world around you.



“The course and Goldsmiths itself provided a range of theoretical and practical discourses and introduced me to people from different backgrounds and disciplines, all of which informed my process. I was able to build a unique artistic practice myself, which is something I will take with me forever.”

Nelmarie
MFA in Computational Arts

Key facts

You'll gain an excellent understanding of existing commercial practices while developing a wide appreciation of the discipline, meaning that your knowledge and skills can adapt to this ever-changing industry.

Benefit from our distinctive approach to teaching. We aim to develop your creative skills alongside your technical skills, and you'll learn from our expert team of friendly, supportive staff who are working at the frontiers of digital practice and research.

We have a terrific range of guest speakers from industry: from key players at the biggest computing and technology organisations in London through to start-ups and charities.

Facilities

Digital fabrication lab (a place for radical experimentation) | VR, motion capture and games facilities (to forge links between digital technologies and artistic practice)

Career inspiration

Many graduates are extremely successful in securing jobs in their field within just a few months of graduation. They've taken up roles at Sony SCEE, Geomerics, IdeaWorks, Bossa Studios, Telegraph Media Group, Time Out, Unit9, and Uniblue Systems.

Find out more
gold.ac.uk/computing

K eep up-to-date with department news by subscribing to our blog at doc.gold.ac.uk/blog

Taught programmes

MA/MFA in Computational Arts

MA in Computer Games Art & Design

MA in Independent Games & Playable Experience Design

MA in Virtual & Augmented Reality (3D Graphics & User Experience Pathway)

MSc in Virtual & Augmented Reality (Programming & Computer Science Pathway)

MSc in Computational Cognitive Neuroscience

MSc in Data Science

MSc in User Experience Engineering

MA/MSc in Digital Journalism

Check programme pages on our website for entry requirements; see pages 117-118 for more information

Research programmes

MPhil & PhD in Arts & Computational Technology

MPhil & PhD in Computer Science

You may also be interested in
MA in Creative & Cultural Entrepreneurship, page 75

Creative & Cultural Entrepreneurship

Develop your creative potential and understanding of entrepreneurship's relevance to the cultural and creative industries, and its impact on society. You'll be encouraged to transform your ideas into sustainable enterprises that can have a strong social and aesthetic effect.

"I came to Goldsmiths hoping for a good education, but was rewarded with practical knowledge and experiences that I had only dreamt of. Being the youngest amongst my peers I was a bit nervous about the amount of experience that I brought to the table. Yet it was that very aspect that made the learning so much more meaningful and fun as my ideas fitted in well with veterans from various creative worlds studying with me."

Devankit
MA in Creative & Cultural Entrepreneurship

Key facts

We'll encourage you to take a creative, entrepreneurial approach to the generation of new ideas, businesses and enterprises, and the infrastructure that supports them.

You'll be taught by experienced staff from the Institute for Creative and Cultural Entrepreneurship (ICCE), by Goldsmiths staff from partner departments, and by practitioners and alumni from business, venues, organisations and social enterprises, providing a direct link with current practice and policy.

London is a global hub for the creative and cultural industries and for social enterprise, and is therefore an ideal base for learning about these fascinating contemporary subjects, and putting your learning into practice.

Our MA in Creative and Cultural Entrepreneurship provides the opportunity to develop specialisms in Computing, Design, Fashion, Leadership, Media and Communications, Music, and Theatre and Performance.

Career inspiration

Our alumni have created businesses, gained investment, and won awards for innovation and creative enterprise. Others are working in the UK and around the world in senior positions in arts and culture, in major venues and organisations, and for financial institutions and governments. Find out more at gold.ac.uk/icce/alumni-profiles.

Find out more
gold.ac.uk/icce



These programmes are shaped around your ambition - you'll develop the theory, tools and network to develop your thinking and put your ideas into practice.

Taught programmes

MA in Creative & Cultural Entrepreneurship

MA in Events & Experience Management

MA in Luxury Brand Management

MA in Social Entrepreneurship

PGCert in Museums & Galleries Entrepreneurship

Check programme pages on our website for entry requirements; see pages 117-118 for more information

You may also be interested in

Arts administration and cultural policy degrees, page 69

Research programmes

MPhil & PhD in the Institute for Creative & Cultural Entrepreneurship

Curating

Develop professional and academic excellence in the field of contemporary curatorial practice by joining a postgraduate programme in our world-leading Department of Art. Our graduates work in leading museums and galleries around the world, and are hugely influential in the development of contemporary art globally.

“Goldsmiths helped me to develop critical thinking and relationships with lecturers and visiting speakers who gave me advice and support. During my degree I also did work experience at an established commercial art gallery and took part in a curatorial project at South London Gallery, as well as an international exhibition.”

Irini

Digital Programmes Manager at V&A, Head of New Media Arts Development at Watermans, and contemporary art producer (Curating graduate)

Key facts

You'll take up the challenge of exploring contemporary curating as an artistic, social and critical undertaking, and you'll be encouraged to innovate and experiment with your practice.

The department is actively engaged with London's dynamic and world-leading professional art scene. We work with a network of highly accomplished artists, curators, galleries and museums in London (and internationally) to create an inspiring environment in which you can study and develop your curatorial practice.

At Goldsmiths you'll be working alongside some of the most creative and ambitious art students in the world, creating opportunities for collaborations, to build professional networks, and to engage directly with the very best of your generation.

Facilities

The MFA programme is located in a dedicated postgraduate centre for the study of contemporary art in Deptford, 10 minutes' walk from the main Goldsmiths campus.

Career inspiration

Recent employers of our MFA Curating students and graduates include Tate Modern, the Guggenheim Museum, Venice Biennale, White Cube Gallery, Portikus and Kunst-Werke.

Find out more
gold.ac.uk/art



12TH
in the world for art
QS World University
Rankings by Subject 2018



Taught programmes

MFA in Curating

Research programmes

MPhil & PhD in Curating

Check programme pages on our website for entry requirements; see pages 117-118 for more information

You may also be interested in
Art degrees, page 67

Design

Push the boundaries of design at Goldsmiths. You'll challenge the discipline's role and conventions, unshackling the design process from traditional specialisms and entrenched methods. In doing so you'll become aware of understanding and approaching design as a way to address and affect positive change within contemporary society.



"The main reason for choosing this course was to have the opportunity to reframe my professional practice in an international and research-based environment. In an era of radical change, where algorithms replace designers, I realised that it is necessary to define first what the problem is, rather than solve it."

Jinyoung Lee
MA in Design: Expanded Practice

Key facts

Our post-disciplinary practical Masters programme encourages you to examine and transform your design practice into a critical and social undertaking. It's not about rigidly positioning you as a particular type of designer (eg product, graphics, interaction) - instead you'll explore topics and issues that affect society right now that require a responsive, fluid and collaborative approach to design.

On the 15-month Masters you'll be taught through project-based learning by prominent practitioners, leaders and visiting speakers, and you'll have dedicated studio space, as well as access to industry-standard workshops and computing labs.

Through an Extended Study you could choose to undertake a professional placement or masterclass, decide to immerse yourself in field research, or take part in a conference programme. All of these options provide a fantastic opportunity to develop your professional skills and networks.

Facilities

Studio space | Workshops with digital equipment | Computing suites

Career inspiration

Our graduates don't just feed the industry - they shape and lead it. Typical careers for design alumni include setting up their own studios, and working as designers and consultants for established agencies, and in the charity, heritage and public sectors.



Find out more
gold.ac.uk/design

Taught programmes

MA in Design: Expanded Practice

Research programmes

MPhil & PhD in Design

Check programme pages on our website for entry requirements; see pages 117-118 for more information

You may also be interested in

PGCE (Secondary): Design & Technology, page 81



12TH
in the world for art
and design
QS World University
Rankings by Subject 2018

Education

Higher Degrees & Initial Teacher Education

The preparation of teachers is central to the early history of Goldsmiths (we've been educating teachers since 1900), and the Department of Educational Studies proudly continues this tradition. But 'education' is about so much more than becoming a teacher, and our programmes reflect this wider view of the discipline.



"The MA provided me with an exciting opportunity to gain a solid foundation in the field of applied linguistics with a particular focus on its use in the educational context. The special focus on multilingualism couldn't be more fitting for a university located in the heart of South-East London where cultural and linguistic diversity can be found all around. Even after graduating, the area still feels like home and I always look forward to any opportunity to go back."

Tom
MA in Multilingualism,
Linguistics & Education

Key facts

Education is a window through which to view the world, with the power to define who we are and how we live. We'll encourage you to question, critique and explore, with a strong focus on the themes of social justice and inclusion. You'll investigate the tensions that can arise in a system that advocates education for all, but prevents the full participation of some groups within society.

You'll learn from academics who are leading the field and researching areas including identity, language and multilingualism, and the arts and learning.

Our MA programmes are distinguished by their emphasis on the interplay between culture, language, identity and creativity, while our PGCE programmes provide opportunities in Primary and Secondary teaching, covering a range of subject areas.

Career inspiration

Our former students are now working as teachers and lecturers, education strategists, consultants, researchers, and community liaison officers.

Find out more

gold.ac.uk/educational-studies

We're a friendly department, and you'll receive individual attention and support for your studies.

Taught programmes

MA in Arts & Learning

MA in Children's Literature

MA in Creative Writing & Education

MA in Education: Culture, Language & Identity

MA in Multilingualism, Linguistics & Education

Initial Teacher Education (ITE) programmes

PGCE (Primary)

PGCE (Secondary) Standard Programme: Art & Design; Biology; Chemistry; Design & Technology; Drama; English; Mathematics; Media Studies with English; Modern Languages; Physics

PGCE (Secondary) Part-Time Programme: Biology; Chemistry; Design & Technology; English; Physics

Check programme pages on our website for entry requirements; see pages 117-118 for more information

Research programmes

MPhil & PhD in Art Practice & Learning

MPhil & PhD in Education

You may also be interested in

MA in Children's Literature: Children's Illustration, page 91

English & Comparative Literature

Study English and comparative literature from a variety of critical and creative perspectives. From literary studies to critical theory, from linguistics and translation to creative writing, and from Shakespeare to the present day, you'll be able to explore the subject in a thriving research department that combines solid theory with an innovative approach.

"I was excited by the idea of being able to study language and culture in an international university, with students and lecturers from around the world. The year did not disappoint. On this course I became a linguist: one dedicated to exploring my own interests and passions with the knowledge and analytical skills gained on this MA. I cannot praise the lecturers highly enough. They are brilliant, kind, thoughtful and present."

Carter
MA in Sociocultural Linguistics

Key facts

You can study texts from different periods, backgrounds and media. Our staff have diverse research specialities, so they're well-placed to help you develop your own interests whether they lie in British, American, Caribbean, postcolonial, comparative or world literature; in different aspects of linguistics; in translation theory and practice; or in creative writing, whether as poet, or as fiction or creative non-fiction writer.

You'll be able to stay in touch with current debates in literature and with the most recent writing through our regular public events and our dedicated Writers' Centre (gold.ac.uk/writers-centre), which has been established to encourage new writing, and hosts literary readings and discussions. The department is also home to the annual Goldsmiths Prize for boldly innovative fiction (gold.ac.uk/goldsmiths-prize).

London offers an excellent range of research facilities in literary, linguistic and cultural studies. We work closely with the University of London's prestigious School of Advanced Study and its specialist institutes for English Studies, Modern Languages Research, and the Study of the Americas. You can also apply for a reader's pass to the British Library - the second largest library in the world.



In the world's
TOP 100
for English language and
literature QS World University
Rankings by Subject 2018

Career inspiration

Our graduates have gone on to have successful careers as published writers and playwrights, winning awards including the Guardian First Book Award, The Sunday Times Young Writer of the Year Award, and the European Union Prize for Literature. Others have gone on to pursue careers in academia, journalism, advertising, public relations, teaching, translation and research.

Find out more
gold.ac.uk/ecl

Taught programmes

MA in Black British Writing

MA in Children's Literature

MA in Creative & Life Writing

MA in Creative Writing & Education

MA in Literary Studies (with pathways in: American Literature & Culture; Comparative Literature & Criticism; Critical Theory; Literature of the Caribbean & its Diasporas; Modern Literature; Romantic & Victorian Literature & Culture; Shakespeare: Early & Modern)

MA in Multilingualism, Linguistics & Education

MA in Sociocultural Linguistics

MA in Translation

Research programmes

MRes in English

MPhil & PhD in Creative Writing

MPhil & PhD in English,
Comparative Literature
or Linguistics

Check programme pages on our website for entry requirements; see pages 117-118 for more information

History

History at Goldsmiths is interdisciplinary, comparative and research-led. Our staff are internationally recognised, award-winning experts in their fields, with particular specialisms concentrated around three research clusters: the history of medicine, emotions and the body; military history; and the history of the Balkans/Russia/East-Central Europe.

“On the MA we focus on bringing queer theory and queer identity into the practice of history: what is queer in a historical setting, and how do we define it in research? As a queer person myself I’m very aware of the power of being able to identify people and practices throughout history, and I’m passionate about researching that.”

Maayan
MA in Queer History

Key facts

Our teaching encompasses Asia, Africa, Britain, Western and Eastern Europe, with a particular focus on the interplay of political, religious, intellectual and cultural differences across time and place.

The department is small and friendly, with a dynamic postgraduate community researching diverse topics that range from 19th-century freak shows to the visual history of the Atatürk cult to contemporary Irish identity.

You’ll be eligible for free membership of the Institute of Historical Research in central London, offering an excellent library and nearly 70 regular research seminars, several convened by staff in the department.

Career inspiration

Our graduates have gone on to pursue careers in media, local government, journalism, museums, charities, the arts and academia.

Find out more

gold.ac.uk/history



Masters students can take modules in other departments and at other University of London institutions, enabling you to tailor your studies.

Taught programmes

MA in History

MA in Queer History

Research programmes

MRes in History

MPhil & PhD in History

Check programme pages on our website for entry requirements; see pages 117-118 for more information

Journalism

Develop the practical skills and experience you'll need to work as a journalist at the highest level. You'll graduate with the hands-on multimedia experience to prepare you for a successful career in journalism, whatever your preferred platform.



"The programme combines traditional news and feature writing with modern digital techniques, including video production, data visualisation and coding: skills now most in demand in the industry. A great strength of the Masters is the lecturers' knowledge of the industry and understanding of the importance of networking. I was encouraged to attend events and pursue internship opportunities that opened a lot of doors for me."

David
MA/MSc in Digital Journalism

Key facts

Our programmes blend intensive workshop-based training in key practical skills such as news writing, video reporting, data and broadcast skills with lectures in subjects like media law and research techniques. We'll encourage you to become a critically aware, thinking journalist who sees your work in its wider social context.

You'll be taught by journalists with experience at the highest levels of the industry in professional environments, which could include fully equipped newsrooms, radio and television studios, and editing suites. So you'll be learning the latest techniques, and receiving training that's relevant to today's workplaces.

You'll be working as a journalist from the moment you arrive. On several of our degrees you'll work on EastLondonLines.co.uk, our local multimedia website, which provides excellent training in news gathering and reporting on stories using words, images, and an array of digital tools.

Facilities

Newsrooms | Radio studio | Television studio | Editing suites

Career inspiration

Our alumni have gone on to work at major broadcasters such as the BBC and Bloomberg TV, on publications like the Guardian newspaper and Elle magazine, and at the cutting edge of digital content at Twitter and Vice.

Find out more
gold.ac.uk/media-communications



The department is a hub for debate and discussion about journalism and the wider media, and we have many guest speakers and networking events throughout the year.

Accreditation



MA in Journalism



MA in Radio
MA in Television Journalism

Taught programmes

MA in Journalism

MA in Radio

MA in Television Journalism

MA/MSc in Digital Journalism

Check programme pages on our website for entry requirements; see pages 117-118 for more information

You may also be interested in

Media, culture and communications degrees, page 91

Management

Become part of a powerful creative network of individuals from diverse and global backgrounds. You'll develop the knowledge, skills and strategies you need to lead, innovate, and bring out the best in people.

“For me, Goldsmiths was all about the following three things: the people, the variety of cultures, and the networking opportunities.”

William
Postgraduate student

Key facts

You'll study in the Institute of Management Studies (IMS), where you'll be guided by leading academics who are researchers and practitioners in areas ranging from work psychology to design and from consumer behaviour to computing. This cross-sector approach will illuminate your studies and encourage you to make unexpected connections between subject areas.

Our degrees will develop your core skills in leadership, project management, coaching, innovation, marketing, research design, and organisational behaviour and change.

We regularly invite guest speakers from business and industry to the Institute. Recent names include Rory Sutherland (Vice Chairman, Ogilvy), Kate Russell (BBC Click), James Harding (Director of BBC News), Tina Kirby (Director of Innovation, Beazley) and Mike McGee (Founder and Creative Director, Framestore).

Career inspiration

Our graduates have gone on to work as change managers, company directors, consultants, researchers, marketeers and strategists.

Find out more

gold.ac.uk/institute-management-studies



Our programmes are firmly rooted in cutting-edge theory, research and practice.

Accreditation



The British Psychological Society
Accredited

MSc in Occupational Psychology

Taught programmes

MSc in Consumer Behaviour

MSc in Management of Innovation

MSc in Marketing & Technology

MSc in Occupational Psychology

PGCert in Coaching

Research programmes

MPhil & PhD in Management

MPhil & PhD in Psychology (IMS)

Check programme pages on our website for entry requirements; see pages 117-118 for more information

You may also be interested in

Psychology degrees, page 97

MA in Luxury Brand Management, page 75

Media, Communications & Cultural Studies

Whether you're producing or researching media, join a team of internationally renowned academics and practitioners who are innovating, shaping and defining the cutting edge of media and cultural practice, theory, politics, policy and aesthetics.



“Having a course like this is extremely important. Too often we forget about the power of the media in shaping the ideas and thoughts of society. Not only are the professors the leaders in their fields, but the programme tackles contemporary debates surrounding race and ethnicity from both a media and sociological perspective, which I found unique.”

Jasper
MA in Race, Media & Social Justice

Key facts

We'll encourage you to ask the hard questions about media, culture and communications in the 21st century. The department is a hub of debate and critique, and regularly holds public events that can enrich your learning and connect you to the heart of conversations about the future of the industry. Recent guests have included Angela Davis, Owen Jones and Gurinder Chadha, and events are held by our centres for feminist research, investigative journalism, global media democracy and political economy to name just a few.

We provide a range of tailor-made theory and practice MA programmes offering professional and critical training, and an extensive choice of option modules, in a community where you can develop as you move into professional life or further study.

If you're studying one of our practice-based Masters degrees you'll have access to industry-standard facilities in the purpose-built Professor Stuart Hall Building.

Facilities

Television studio | Radio studio | Photography studio | The latest digital video and audio editing equipment

Career inspiration

Our students and graduates regularly win prestigious national and international awards and prizes, and alumni have gone on to pursue careers in journalism, filmmaking, media production, programming, marketing, PR, human rights and research.



Find out more
[gold.ac.uk/
media-communications](http://gold.ac.uk/media-communications)

9TH
in the world for media
and communications
QS World University
Rankings by Subject 2018

Accreditation



MA in Journalism



MA in Radio
MA in Television Journalism

Theory programmes

MA in Brands, Communication & Culture

MA in Children's Literature:
Children's Illustration

MA in Cultural Studies

MA in Culture Industry

MA in Digital Media: Technology & Cultural Form

MA in Film & Screen Studies

MA in Global Media &
Transnational Communications

MA in Media & Communications

MA in Political Communications

MA in Postcolonial Culture & Global Policy

MA in Promotional Media: Public Relations,
Advertising & Marketing

MA in Race, Media & Social Justice

Practice programmes

MA/MSc in Digital Journalism

MA in Filmmaking (with pathways in:
Cinematography; Directing Fiction; Editing;
Producing; Screen Documentary; Sound
Recording, Post-Production & Design)

MA in Journalism

MA in Photography: The Image & Electronic Arts

MA in Radio

MA in Script Writing

MA in Television Journalism

Research programmes

MRes in Filmmaking, Photography
& Electronic Arts

MRes in Media & Communications

MPhil & PhD in Cultural Studies

MPhil & PhD in Media & Communications

Check programme pages on our website for entry requirements; see pages 117-118 for more information

You may also be interested in

Journalism degrees, page 87

MA in Children's Literature, page 81

MA in Creative & Cultural Entrepreneurship, page 75

MA in Gender, Media & Culture, page 101

Music

Maximise your creative and academic potential within a diverse and inclusive musical landscape, full of performance, composition and research opportunities, and a rich music events programme.



“The best part of being at Goldsmiths is that it created a level playing field, and a shared language for collaborative and interdisciplinary interactions: I found myself speaking to art theorists, to designers, architects... we all had ideas to share and grow from.”

James
Sound & Music Designer
(MMus Sonic Arts, 2014)

Find out more
gold.ac.uk/music

Key facts

You'll be part of one of the largest postgraduate music communities in the UK, and you'll have the opportunity to connect with industry professionals as well as teaching staff who are leading international scholars, composers, sonic artists and performers.

Our MA in Music and MMus programmes combine creativity with rigorous theoretical, historical and contextual studies. You'll be able to choose from an exciting variety of option modules, allowing you to tailor your programme to your unique interests.

Throughout the year, you can participate in a wide range of performance opportunities, including the Goldsmiths Sinfonia, Chamber Choir, Vocal Ensemble, Creative Jazz Ensemble, Contemporary Music Ensemble, lunchtime and evening recitals, and live events at the Students' Union. We also hold an annual PureGold summer music festival that showcases our students in South London venues, reflecting the diversity of their creativity, from opera through to improvisation and sonic installation.

Facilities

Goldsmiths Music Studios | Stanley Glasser Electronic Music Studio | Suites of practice rooms | Steinway Model D

Career inspiration

Many of our graduates have gone on to pursue careers in music - as performers, producers, composers, sound artists and engineers, journalists, and teachers. Others have found work in the wider creative and cultural sectors.



London is a cultural nexus. As a student here you'll be able to enjoy and participate in the city's thriving international music and arts scene.



Incorporated Society of Musicians (ISM) corporate member



Gold Academic Supporter of the British Academy of Songwriters, Composers and Authors (BASCA)

Taught programmes

MA in Music (Contemporary Music Studies; Ethnomusicology; Musicology; Popular Music Research; General)

MMus (Composition; Creative Practice; Performance & Related Studies; Popular Music; Sonic Arts)

MA in Arts Administration & Cultural Policy: Music Pathway

Check programme pages on our website for entry requirements; see pages 117-118 for more information

You may also be interested in

MA in Creative & Cultural Entrepreneurship, page 75

Research programmes

MPhil & PhD in Music (Research; Composition; Performance Practice; Sonic Arts)

Politics & International Relations

At Goldsmiths we see politics as an interpretive lens through which to view a rapidly shifting world: a world where art, culture and the everyday are as relevant as political institutions and governments, and where the Global South and issues of migration, memory and identity are just as current as the study of hegemonic powers.



“I loved the academic freedom that Goldsmiths offers, and the chance to explore topics related to my interests, and even topics that aren’t. And I absolutely loved London – it has an incredible energy and a do-it-yourself spirit that was incredibly inspiring for my writing and personal development.”

Tausif
Spiegel-Wilks Curatorial Fellow at the Institute of Contemporary Art, Philadelphia (MA in Art & Politics, 2017)

Key facts

You’ll be taught by research-active academics who have internationally recognised expertise in postcolonial and international studies, gender and identity, human rights and transitional justice, art and culture, political economy and political theory. Politics here is approached from a critical and comparative perspective, drawing on our expertise on Asia, the Middle East, Latin America, Africa and the ‘margins’ of Europe. We engage with contemporary theoretical resources, including poststructuralism, feminism and postcolonialism, making the Department a lively and richly interdisciplinary environment for postgraduate research.

The Department houses two internationally significant research centres - the Centre for Postcolonial Studies and the Political Economy Research Centre - as well as a new Research Unit in Contemporary Political Theory. Hosting various public events and visiting speakers’ series, they bring a variety of opportunities for postgraduate engagement in research and outreach activities.

Our unique taught Masters programmes traverse common disciplinary boundaries, inviting you to challenge and extend your conceptions of politics, its traditional methods and practices. Research-based teaching at Masters level brings students into close dialogue with individual academics and cutting-edge approaches.

Find out more

gold.ac.uk/politics-and-international-relations



Voted one of the **UK's TOP** political universities by students
Which? University 2017

Career inspiration

Our graduates have gone on to pursue significant and exciting careers in international affairs and development, journalism, central and local government, art curation and the creative industries.

Taught programmes

MA in Art & Politics

MA in International Relations

MA in Politics, Development & the Global South

Research programmes

MPhil & PhD Politics

Check programme pages on our website for entry requirements; see pages 117-118 for more information

Psychology

Study in an internationally respected psychology department, with access to dedicated staff with diverse research and teaching strengths, and cutting-edge facilities including EEG, eye-tracking, brain stimulation labs, and the Goldsmiths infant lab.



“Goldsmiths was a great place to study, with an exciting social element. The diverse range of people I met made it a very interesting experience. The university staff were very supportive of my aspirations and without them it is unlikely I would be in my current position.”

Isaac
Trainee Clinical Psychologist
(MSc Cognitive & Clinical Neuroscience)

Key facts

Staff have expertise across the discipline, with particular research strengths in cognition and neuroscience, developmental and educational science, clinical and forensic science (including individual differences), the science of creative and performing arts, and social processes.

You’ll be encouraged to connect the subject to the world around you. From how sound sells brands to bullying in schools, we investigate and conduct research in a range of sectors and industries - from advertising agencies to brain injury units, and from airports to the BBC.

All programmes have a strong research focus, and all students have the opportunity to get involved in our original research projects. You’ll be able to make the most of the rich intellectual community in the department by attending our public lecture series - recent topics have included the nature of the conscious mind, and the social psychology of scapegoating behaviour.

Facilities

Behavioural and psychophysical testing facilities | Patient testing rooms | Infant lab | Motion tracking | Labs for brain stimulation and high-density electroencephalography (EEG)

Career inspiration

Graduates of these programmes will be well-equipped for a wide range of careers in the healthcare services, NHS management, the criminal justice system, consultancy, advertising, and research. Alumni also go on to undertake clinical doctorates and PhD programmes.



Find out more
gold.ac.uk/psychology



We have well-established research links with other academic institutions, and with a range of organisations such as hospitals, schools, charities and businesses.

Accreditation



The British Psychological Society
Accredited

MSc in Occupational Psychology

Taught programmes

MSc in Cognitive & Clinical Neuroscience

MSc in Forensic Psychology

MSc in Foundations in Clinical Psychology & Health Services

MSc in Music, Mind & Brain

MSc in Psychology of the Arts, Neuroaesthetics & Creativity

MSc in the Psychology of Social Relations

Check programme pages on our website for entry requirements; see pages 117-118 for more information

You may also be interested in

MSc in Computational Cognitive Neuroscience, page 73

MSc in Occupational Psychology, page 89

Research programmes

MRes in Research Methods in Psychology

MPhil & PhD in Psychology

Social Work

Develop the knowledge, values, and skillset you need to practise as a reflective and ethical social worker. If you're already working in a related area, our programmes will enable you to extend and enhance your existing competencies.

"I can honestly say that completing my MA has been one of the most rewarding and enjoyable experiences of my life. It has given me the chance to join an amazing profession as well as meet, laugh and learn with a great bunch of people – who could ask for more?!"

Sally
MA in Social Work

Key facts

Our programmes recognise the unique contribution that each student's qualities and life experiences brings to the learning environment, and focuses on encouraging you to explore your values and knowledge base and embed this in your social work practice.

Teaching is characterised by a strong commitment to social justice and anti-oppressive principles, and we'll ask you to explore the tensions, ambiguities and uncertainties that exist in social work. This will develop your critical thinking skills, and prompt you to connect theory with practice.

The close connections we have with employer stakeholder partners means that you'll have the opportunity to develop the skills that will be useful in your future career in placement settings.

Career inspiration

Our graduates have gone on to work in local authority children's and adult services departments, and independent and voluntary sector agencies such as the NSPCC, Family Action and MIND.

Find out more

gold.ac.uk/social-work



Accreditation

hcpc health & care
professions
council

MA in Social Work

Taught programmes

MA in Social Work

MA/PGDip/PGCert in Professional
Leadership for Social Work

MA-level Social Work CPD (Continuing
Professional Development)

Research programmes

MPhil & PhD in Social Work

Check programme pages on our website for entry requirements; see pages 117-118 for more information

Sociology

Join one of the most innovative sociology departments in the country. We play a unique role in defining the discipline, setting agendas, and intervening in key debates, and you'll get to work alongside a lively mix of students from all over the world - with different histories, experiences, and expertise.



"I've been interested in Goldsmiths for years and was attracted by its focus on critical theory and interdisciplinary creativity across the departments. Coming from a performing and visual arts background I was worried that I would struggle in the course. Sometimes I was overwhelmed, but always in a very positive and challenging way. Goldsmiths opened up new ways of critical thinking and understanding the world for me."

Kerstin
MA in Cities & Society

Key facts

Study in a department that pioneers 'live' sociology, connecting you to contemporary social issues like human rights, globalisation, financial economy, class and the super-rich, urban life and the inner city, and new media.

You'll be in conversation with academics who are experts in their field, published authors and media commentators in their own right. World-class research informs teaching, bringing you close to cutting-edge developments in sociological thinking. In a nutshell, you'll be part of a department that's a central hub for intellectual debate.

Research in the department is focused around six clusters: race, religion and nationalism; world cities, economies and social exclusion; culture and social theory; gender and social life; politics, rights and globalisation; life sciences, medicine, technology and health.

Career inspiration

Recent graduates have embarked on careers in social research, think tanks, the arts and cultural sectors, human rights, NGOs, and in government and public administration. They've also progressed to PhD study.

Find out more
gold.ac.uk/sociology



We're passionate about training the next generation of social researchers.

Taught programmes

- MA in Cities & Society
- MA in Critical & Creative Analysis
- MA in Gender, Media & Culture
- MA in Human Rights, Culture & Social Justice
- MA in Photography & Urban Cultures
- MA in Race, Media & Social Justice
- MSc in Social Research
- MA in Visual Sociology

Check programme pages on our website for entry requirements; see pages 117-118 for more information

You may also be interested in

MA in Brands, Communication & Culture, page 91

Research programmes

- MPhil & PhD in Sociology
- MPhil & PhD in Visual Sociology

Theatre & Performance

From investigating artefacts, texts and theatre forms to performance studies, you'll take an interdisciplinary and intercultural approach to studying contemporary and historical theatres, and undertaking creative critical research practices.

"I am privileged to spend this year with not only a highly professional innovative and insightful faculty, but with a remarkably varied group of co-students, from almost every possible background. I get to reflect on and theorise my professional output, which inevitably leads to unexpected lines of new work, which I can immediately experiment with and get feedback for. It's truly great."

Raz
MA in Performance Making

Key facts

You'll join a forward-thinking and open-minded environment where you can choose between programmes that are shaped by internationally recognised staff research expertise in theatre and performance cultures from Europe, Africa, Asia and the USA. Specialisms cover: critical and post-colonial theories, performance theory, theatre history, world theatres, political activism and applied theatres, physical theatres, new writing, multimedia, live art and dance.

You'll have the opportunity to work with professionals who know how theatre can transform lives and effect social change, and you'll be supported to find your own intellectual, critical and/or creative voice.

It's a lively department, with frequent events, performances and distinguished guest speakers. This helps create a community of students, staff and graduates who are connected to contemporary debates, and who want to make their own mark on today's culture.

Facilities

Studio theatre | Five performance studios | Scenic workshops | Sound studio | Open-access media lab

Career inspiration

Recent graduates are now working as performers, directors, writers, producers, technicians, project leaders, teachers, researchers and academics. They're working at organisations including the National Theatre, LIFT, Tamasha Theatre Company, Create Ireland, Theatre Royal Plymouth, and in the West End.



Close to central London, we're part of one of the most dynamic creative scenes in the world.

Find out more
gold.ac.uk/theatre-performance

Taught programmes

MA in Applied Theatre: Drama in Educational, Community & Social Contexts

MA in Black British Writing

MA in Dramaturgy & Writing for Performance

MA in Musical Theatre

MA in Performance & Culture: Interdisciplinary Perspectives

MA in Performance Making

MA in World Theatres

Research programmes

MPhil & PhD in Drama

Check programme pages on our website for entry requirements; see pages 117-118 for more information

You may also be interested in

MA in Creative & Cultural Entrepreneurship, page 75
PGCE (Secondary): Drama, page 81

Therapeutic Studies

Goldsmiths has a long-established reputation for the provision of training in a wide range of therapies, including counselling, art and dance therapy, and cognitive behavioural therapy. It's the ideal place for anyone who's passionate about these disciplines, and who wants to develop their skills, knowledge and therapeutic values.



“The MA structure and the variety of staff and knowledge ensured a strong foundation in networking across the profession, and an understanding of the value of research, continual development and growth. It’s incredible how one course and class can reach across the globe in such a wonderful way.”

Kimberly
Expressive Therapist in a young families’ homelessness refuge (MA in Dance Movement Psychotherapy)

Key facts

You’ll explore the development of contemporary therapeutic disciplines and practices in their cultural, historical and social contexts, and consider therapeutic studies in relation to questions of identity and difference, and equality and diversity.

You will learn in experiential and innovative ways, and will be encouraged to reflect on your own values and experience in your practice. Creative thinking forms a large part of our programmes, and you’ll be encouraged to take fresh approaches - often inspired by other disciplines - to what you learn and practice.

The lecturers, seminar leaders and tutors on our programmes are practising counsellors and therapists, and have experience working in the public and private sectors, so you can be sure that theory will be enhanced by practical insight. This will enable you to take what you learn in the classroom to the outside world, and make a real difference to people and communities.

Career inspiration

We have a well-established reputation for nurturing high quality therapists and practitioners. Graduates have gone on to practise as therapists and counsellors in the NHS, social services, and in the education sector. Others pursue careers in support and welfare work, and advocacy and mentoring.

Find out more
gold.ac.uk/therapies



Accreditation



MA in Art Psychotherapy



MA in Dance Movement Psychotherapy

Taught programmes

Certificate in Humanistic & Psychodynamic Counselling

MA in Art Psychotherapy

MSc/PGDip in Cognitive Behavioural Therapy (CBT)

MA in Counselling

MA in Dance Movement Psychotherapy

MA in Understanding Domestic Violence & Sexual Abuse

MA in Understanding Domestic Violence & Sexual Abuse Distance Learning

Our professional Masters programmes involve supervised placements and internships

Research programmes

MPhil & PhD in Art Psychotherapy

MPhil & PhD in Counselling & Psychotherapy

Check programme pages on our website for entry requirements; see pages 117-118 for more information

Visual Cultures

Explore new forms of research practice and engage with the latest theoretical ideas within contemporary art, the curatorial and architecture in a culturally diverse and intellectually challenging environment. You'll look at these areas within a global context, and consider the ways in which they address urgent social, cultural and political conditions.



“My year on the degree was one of pure exploration, which has advanced my understanding of the world I engage with on so many levels; it was a journey into my own interests (which I lost and found several times throughout the year). The MA is flexible rather than specific in many ways, but it teaches you how to plan a methodology, design a narrative, and construct an argument that responds to the most urgent and critical topics of our time.”

Hania
MA in Research Architecture

Key facts

We're one of the few university departments in the world to have developed programmes that consider contemporary art and culture beyond the disciplinary parameters of traditional art history. So you'll consider visual culture within a framework of critical theory, philosophy and cultural studies, including issues of cultural difference, race, performativity, visual display, aurality, and encounters with diverse audiences.

You'll be encouraged to explore and innovate. You'll develop independence of thought by discovering, evaluating, and making use of a wide range of historical, theoretical, creative and often collaborative approaches to research and writing.

All of our staff are research active, and their teaching draws on contemporary debates around visual cultural approaches to art and globalisation, performance studies, queer studies, the environmental humanities, the curatorial, architecture and spatial practice, and art's relationship to sound and popular music.

Career inspiration

Our former students have taken up a wide variety of creative and professional roles within contemporary art and culture across the world. Many alumni have set up their own enterprises and cultural initiatives.

Find out more

gold.ac.uk/visual-cultures



As a student in London you'll be well-placed to take advantage of the many galleries, art spaces, museums, cultural facilities and specialist libraries in the capital.

Taught programmes

Graduate Diploma in Contemporary Art History

MA in Contemporary Art Theory

MA in Research Architecture

Research programmes

MRes in Curatorial/Knowledge

MRes in Visual Cultures

MPhil & PhD in Curatorial/Knowledge

MPhil & PhD in Research Architecture

MPhil & PhD in Visual Culture

Check programme pages on our website for entry requirements; see pages 117-118 for more information

SPECIALIST PROGRAMMES FOR INTERNATIONAL STUDENTS

We offer a range of preparation programmes for international students - whether you want to improve your English language skills or develop your UK academic study skills before you start a postgraduate degree.

Pre-sessional English language programmes (5-12 weeks)

Improve your English language and academic skills before you begin your degree.

These programmes are for international students who have a place on a degree at Goldsmiths who want or need to improve their English language skills before they begin. Programmes last between 5 and 12 weeks. Our Pre-sessional English language programmes start from June each year, preparing you for studies beginning in the autumn.

Accommodation

We have rooms available in our halls of residence for the duration of the pre-sessional courses. Room allocation is dependent on availability, however other accommodation options are available. If you are interested in applying, find out more about what is available at gold.ac.uk/accommodation/pre-sessional

English language requirements

The English language requirements for our Pre-sessional programmes range from an equivalent of IELTS 5.0 to 6.5; please check the table on the right to find the correct course for you.

You will need to take a UK Visas and Immigration (UKVI) IELTS test for all of the Pre-sessional programmes. You can contact the Immigration Advisory Service if you have any questions about what test to take (immigration@gold.ac.uk).

Find out more

gold.ac.uk/international/pre-sessional-english-language



Length and dates	Entry requirements	Fees for 2018-19*										
12 weeks full-time 17 June to 6 September 2019	You can join the 12-week programme if your current overall UKVI IELTS score is 1.0 below the requirement for the degree you're joining. The table below indicates what this will be. There are no minimum skill score requirements.	£4,080**										
	<table border="1"> <thead> <tr> <th>Degree entry requirement***</th> <th>Entry requirement for the 12-week programme</th> </tr> </thead> <tbody> <tr> <td>7.0</td> <td>6.0</td> </tr> <tr> <td>6.5</td> <td>5.5</td> </tr> <tr> <td>6.0</td> <td>5.0</td> </tr> </tbody> </table>		Degree entry requirement***	Entry requirement for the 12-week programme	7.0	6.0	6.5	5.5	6.0	5.0		
	Degree entry requirement***		Entry requirement for the 12-week programme									
	7.0		6.0									
6.5	5.5											
6.0	5.0											
9 weeks full-time 8 July to 6 September 2019	You can join the 9-week programme if your current overall UKVI IELTS score is 0.5 below the requirement for the degree you're joining. The table below indicates what this will be. There are no minimum skill score requirements.	£3,400**										
	<table border="1"> <thead> <tr> <th>Degree entry requirement***</th> <th>Entry requirement for the 9-week programme</th> </tr> </thead> <tbody> <tr> <td>7.0</td> <td>6.5</td> </tr> <tr> <td>6.5</td> <td>6.0</td> </tr> <tr> <td>6.0</td> <td>5.5</td> </tr> <tr> <td>5.5</td> <td>5.0</td> </tr> </tbody> </table>		Degree entry requirement***	Entry requirement for the 9-week programme	7.0	6.5	6.5	6.0	6.0	5.5	5.5	5.0
	Degree entry requirement***		Entry requirement for the 9-week programme									
	7.0		6.5									
	6.5		6.0									
6.0	5.5											
5.5	5.0											
5 weeks full-time 5 August to 6 September 2019	You can join the 5-week programme if your current overall UKVI IELTS score is 0.5 below the requirement for the degree you're joining. The table below indicates what this will be. There is also a minimum writing skill score requirement; details are below.	£2,070**										
	<table border="1"> <thead> <tr> <th>Degree entry requirement***</th> <th>Entry requirement for the 5-week programme</th> </tr> </thead> <tbody> <tr> <td>7.0</td> <td>6.5 (with a minimum of 6.5 in writing)</td> </tr> <tr> <td>6.5</td> <td>6.0 (with a minimum of 6.0 in writing)</td> </tr> <tr> <td>6.0</td> <td>5.5 (with a minimum of 5.5 in writing)</td> </tr> </tbody> </table>		Degree entry requirement***	Entry requirement for the 5-week programme	7.0	6.5 (with a minimum of 6.5 in writing)	6.5	6.0 (with a minimum of 6.0 in writing)	6.0	5.5 (with a minimum of 5.5 in writing)		
	Degree entry requirement***		Entry requirement for the 5-week programme									
	7.0		6.5 (with a minimum of 6.5 in writing)									
6.5	6.0 (with a minimum of 6.0 in writing)											
6.0	5.5 (with a minimum of 5.5 in writing)											

The English language requirements are based on our current UKVI visa regulations. The visa rules may change before you start your studies with us, so for the latest information always contact our Immigration Advisory Service (immigration@gold.ac.uk).

*Fees quoted are per year. **We ask for a £300 deposit when you accept our offer of a place. This amount is then deducted from your tuition fee when you begin the programme.

***Check your degree entry requirements at gold.ac.uk/course-finder.

Pre-Masters Pathways (1 year)

Our Pre-Masters Pathway programmes will prepare you for your future postgraduate study in the UK, or act as a conversion course if you've studied one subject at undergraduate level but want to change focus at postgraduate level. They're designed specially for international and EU students.

Creative & Cultural Industries

Specialise in a subject that interests you
You can specialise in a range of subjects - see pages 114-115 for further details about each of the programmes.

Design

Improve your study skills and academic English
You will also improve your study skills and use of academic English - the essential skills you will need to successfully study a Masters degree.

Media, Culture & Social Sciences

Progression to our degrees
On completion of the programme, you'll be awarded a Graduate Diploma or Pre-Masters Certificate and be guaranteed a place on a relevant Goldsmiths Masters if you obtain an overall score of 50% or more; some progression routes are subject to an interview - see pages 114-115 for details.

Music

Find out more
gold.ac.uk/preparation



UKVI IELTS

5.5

(with no individual component lower than 5.5) accepted

GUARANTEED ACCOMMODATION*

with 24/7 security presence

PERSONAL TUTOR

PROGRESSION

onto a relevant Goldsmiths Masters degree with a pass mark of 50% or more

* subject to meeting deadlines

Media, Culture & Social Sciences

Creative & Cultural Industries

Compulsory modules

- | | |
|--|--|
| <ul style="list-style-type: none"> • Academic Writing and Language Development • Academic Listening and Speaking • Critical Moments in Western Thought: Modernity and Postmodernity • Images and their Interpretations | <ul style="list-style-type: none"> • Academic Writing and Language Development • Academic Listening and Speaking • Critical Moments in Western Thought: Modernity and Postmodernity • Images and their Interpretations |
|--|--|

Additional modules

- | | |
|--|---|
| <ul style="list-style-type: none"> • Issues Around Modern Knowledge, Modern Power • Issues Around Media and Technologies | <ul style="list-style-type: none"> • Introduction to Creative and Cultural Industries • Introduction to Arts Administration and Cultural Policy |
|--|---|

If you pass at the required level you can progress onto these degrees:

- | | |
|---|---|
| <ul style="list-style-type: none"> • MA Anthropology & Cultural Politics • MA Applied Anthropology & Community & Youth Work • MA Applied Anthropology & Community Development • MA Applied Theatre: Drama in Educational, Community & Social Contexts • MA Art & Politics • MA Cities & Society • MA Contemporary Art Theory • MA Critical & Creative Analysis • MA Education: Culture, Language & Identity • MA Film & Screen Studies • MA Gender, Media & Culture • MA Human Rights, Culture & Social Justice • MA International Relations • MA Media & Communications • MA Multilingualism, Linguistics & Education • MA Performance & Culture: Interdisciplinary Perspectives • MA Performance Making • MA Political Communications • MA Postcolonial Culture & Global Policy • MA Promotional Media: Public Relations, Advertising & Marketing • MA Social Anthropology • MSc Social Research • MA Sociocultural Linguistics • MA Understanding Domestic Violence & Sexual Abuse • MA Visual Anthropology • MA Visual Sociology • MA World Theatres | <ul style="list-style-type: none"> • MA Arts Administration & Cultural Policy • MA Arts Administration & Cultural Policy: Music Pathway • MA Creative & Cultural Entrepreneurship • MA Cultural Policy, Relations & Diplomacy • MA Cultural Studies • MA Culture Industry • MA Social Entrepreneurship • MA Tourism & Cultural Policy |
|---|---|

Admission to these programmes is subject to interview

Music

Design

Compulsory modules

- | | |
|--|--|
| <ul style="list-style-type: none"> • Academic Writing and Language Development • Academic Listening and Speaking • Critical Moments in Western Thought: Modernity and Postmodernity • Images and their Interpretations | <ul style="list-style-type: none"> • Academic Writing and Language Development • Academic Listening and Speaking • Introduction to Design Studio Practice |
|--|--|

Options such as:

- | | |
|--|--|
| <ul style="list-style-type: none"> • Research Essay • Advanced Classical Performance • Soviet Music and Beyond • Narrative, Representation and Popular Song • Minimalism and Postminimalism • Advanced Topics in History: Mozart's Operas • Improvisation | <ul style="list-style-type: none"> • Studio Project: Application of Methods and Processes • Pathway Design Project |
|--|--|

If you pass at the required level you can progress onto these degrees:

- | | |
|--|--|
| <ul style="list-style-type: none"> • MA Music (Contemporary Music Studies) • MA Music (Ethnomusicology) • MA Music (Historical Musicology) • MA Musical Theatre • MMus Composition • MMus Creative Practice • MMus Performance & Related Studies • MMus Popular Music • MMus Sonic Arts | <ul style="list-style-type: none"> • MA Design: Expanded Practice |
|--|--|

Admission to the MA programmes is subject to interview

Length	Minimum IELTS entry requirements	Fees per year (2019-20)*
1 year full-time	Any IELTS test at 5.5 or equivalent in each component	£13,620 (Media, Culture & Social Sciences; Creative & Cultural Industries) £14,440 (Music; Design)

*Fees are quoted for the academic year only. They are subject to annual review and are likely to increase by approximately 3-5% each year.

How to apply

For the majority of our postgraduate programmes you apply directly to Goldsmiths using our online application system. Just visit the programme page of the course you're interested in on our website, where there'll be more information about the steps you need to go through.

The exceptions are:

- PGCE programmes: you apply through UCAS Teacher Training
- MA in Social Work: you apply through UCAS

If you're an international student you can apply for any of our full-time programmes.

When to apply

We accept applications from October for students wanting to start the following September. Some of our programmes have application deadlines, and if you're applying for funding (see pages 120-121) you may need to apply by certain dates. Bear this in mind so that you've got enough time to complete your application.

Selection process

After you've submitted your application it will be reviewed by our staff. You may also be invited to an interview (either in person or via Skype). Once your application and qualifications have been considered, we'll let you know whether you'll be offered a place.

MPhil and PhD programmes

If you're applying for an MPhil/PhD you should get in touch with the programme contact or academic department in which you'd like to study before you submit your application. It may also be possible to arrange an advisory meeting with your preferred supervisor. As part of your application you'll need to write a research proposal. This should:

- Persuade the reader that you have an interesting project in mind, that you have original ideas, and that you have the skills and understanding required to achieve your plans
- State your case clearly and accessibly
- Be realistic in terms of what you expect to achieve with your research
- Explain how your research will fit within the scholarly community that you're applying to be a part of, and make connections with the supervisor you'd like to work with
- Read our advice for writing a research proposal at gold.ac.uk/pg/apply/research-proposal

Find out more

gold.ac.uk/pg/apply

Entry requirements

Our minimum entry requirements are outlined below. Some of our Masters degrees will have higher entry requirements, or specific portfolio, work experience or 'fitness to train' requirements for example. You might also be considered for some programmes if you aren't a graduate, but have relevant experience and can show that you have the ability to work at postgraduate level. You should check online programme pages for the most up-to-date entry requirements.

Minimum entry requirements

Masters degrees, Postgraduate Diplomas and Postgraduate Certificates

You should normally have (or expect to be awarded) an undergraduate degree of at least second class standard in a relevant subject.

MRes programmes

You should normally have (or expect to be awarded) an undergraduate degree of at least upper second class standard in a relevant subject.

MPhil/PhD programmes

You should normally have (or expect to be awarded) a taught Masters in a relevant subject.

Pre-sessional English Language programmes and Pre-Masters Pathways

See pages 110-115.

International qualifications

We accept a wide range of international qualifications in addition to the ones listed here. You can find out more about the qualifications we accept from around the world at gold.ac.uk/international/regions

English language requirements

If English isn't your first language, you'll need to meet our English language requirements to study with us. We accept a wide range of proficiency qualifications but prefer IELTS. If you need assistance with your English language, we offer a range of Pre-Masters Pathways and Pre-sessional English Language programmes that can help prepare you for postgraduate study - find out more on pages 108-115.

Degree programmes

As a guide, you need a minimum score of 6.5 in IELTS (with a minimum of 6.5 in the written test). However, some of our programmes require a higher IELTS score. This will be stated on online prospectus entries.

Pre-sessional English Language programmes and Pre-Masters Pathways

See pages 110-115.

Get in touch

If you have any questions before you apply you can email our Enquiries team: course-info@gold.ac.uk

If you have any questions after you've applied you can email our Admissions team: admissions@gold.ac.uk

You can also call +44 (0)20 7078 5300.

In addition to IELTS we also accept the following qualifications for study at degree level or above as proof of English language capability. Students who hold the following qualifications at the right level will not need to submit an IELTS test score. If your qualification isn't listed, please contact admissions@gold.ac.uk

Qualification	Result
A-level in English from a UK awarding body	Grade C
Bellerbys Foundation Programme**	65% overall
Cambridge Advanced English	Grade C
Cambridge Proficiency English	Grade C
CATS College	Please contact our Admissions team
GCSE/O-level in English from a UK awarding body	Grade C/Grade 4
Hong Kong Examinations and Assessments Authority	Grade 4
Indian Standard X/Indian Standard XII	75% in both exams
International Baccalaureate (taught in English)	Successful completion at 28+ points
International Baccalaureate with English as a subject	At Higher Level 4
International Baccalaureate English Language A: Literature/International Baccalaureate English Language A: Language & Literature	At Higher Level 4 or Standard Level 5
International Baccalaureate English Language B	At Higher Level 4 or Standard Level 6
INTO University Foundation Programme**	Please contact our Admissions team
INTO University Graduate Diploma	Please contact our Admissions team
Kaplan University Foundation Certificate**	Please contact our Admissions team
Kaplan Pre-Masters Programme	Grade B or 65% overall
Malaysian 1119 English module	Grade B
Norwegian Vitnemal in English	Grade 4
OnCampus (CEG) Undergraduate Foundation Programme**	Please contact our Admissions team
Singapore Integrated Programme (IP) in Language Arts	Grade C
Singapore O/A Level	Grade C
USA 3 Advanced Placements	Grades 333

*Results listed above are equivalent to IELTS 6.5; please visit gold.ac.uk/pg/apply/english-language or contact our Admissions team for additional equivalencies and further details. English language qualifications should be less than two years old at the time you will start your studies with us.

**The English component score can be accepted as proof of English.

Fees

Below you'll find the typical ranges of tuition fees for full-time students in 2019. Fees are quoted per year and are subject to annual review; please note that they were correct at the time of printing but may be subject to change.

The UK government classifies a student's fee status as either 'home/EU' or 'international'. To find out your fee status you can visit the UK Council for International Student Affairs (UKCISA) website: ukcisa.org.uk

At the time of printing, fees for students from European Union countries were expected to remain the same as Home UK students for 2019 entry. Please visit gold.ac.uk/eu for the most up-to-date information about EU student status before applying.

Home/EU students

MA, MFA & MSc programmes: £6,330-£12,940
MMus programmes: £6,990-£11,430

PGCE programmes: These fees are set by the UK government, and the 2019 fees have not yet been announced. As a guide, for 2018 entry the fees were £9,250.

MRes programmes: £6,330-£7,750

MPhil/PhD programmes: These fees are set by Research Councils, and the 2019 fees have not yet been announced. As a guide, for 2018 entry the fees were £4,260.

International students

Pre-Masters Pathways: £13,620-£15,810

MA, MFA & MSc programmes: £14,330-£23,160

MMus programmes: £14,330-£22,520

PGCE programmes: £13,500

MRes programmes: £14,330-£18,340

MPhil/PhD programmes: £14,330-£18,340

Please check gold.ac.uk/pg/fees-funding to find the exact fee for each programme.

Advanced fee payments

All self-financed** students who are 'international' for the purposes of tuition fees are asked to pay an advanced payment of tuition fees of £3,000 (or £300 for Pre-sessional programmes, page 111) as soon as possible after receiving an unconditional offer. This money is deducted from your total fee liability for the academic year, and, if you do require a Tier 4 visa, we will list the payment on your Confirmation of Acceptance of Studies (CAS) statement. We can't issue a CAS without the payment, unless you meet one of the exemptions set out online.

**Self-financing is the description given to any student without a UK Visas and Immigration (UKVI) defined 'official sponsor'. Official sponsors include any university, government, international organisation or company. Full details will be sent if you are offered a place at Goldsmiths. You can find out more about the advanced payment of fees at gold.ac.uk/immigration/before-you-arrive/other-information

Paying your fees

Tuition fees are due at or before enrolment. The payment of your annual tuition fee can be spread over a series of direct debit payments, starting in October 2019. You can also pay by cheque and most major credit cards or online. Find out more at gold.ac.uk/student-services/tuition-fees

All information was correct at the time of print. For the latest information please visit gold.ac.uk/pg/fees-funding

Scholarships and funding

Funding your studies is obviously a key consideration that you'll want to prepare for. As a postgraduate student there are several types of funding that may be available to you:

- Funding from Goldsmiths
- Funding from research councils
- Funding from the UK government
- External sources of funding

Funding from Goldsmiths

We offer a range of scholarships, bursaries and fee waivers that can provide financial assistance. For 2018 entry we offered more than £200,000 in scholarships and bursaries for postgraduate taught programmes. Additionally, we run discount schemes and many departments offer their own subject-specific funding for prospective students.

Find out more at gold.ac.uk/pg/fees-funding

Funding from research councils - PhD studentships

We've been successful in securing multimillion pound funding for PhDs in the arts and humanities, computing, creative industries and the social sciences, through our involvement in several doctoral training centres and consortiums. This currently includes:

- 75 studentships per year through the CHASE AHRC Doctoral Training Partnership, for research in the arts and humanities
- 50 studentships per year through the SeNSS Doctoral Training Partnership, funding by the ESRC for research in the social sciences
- 11 studentships per year through the EPSRC Centre for Doctoral Training in Intelligent Games and Game Intelligence (IGGI) to fund the next generation of digital games researchers, designers, developers and entrepreneurs
- 12 studentships per year through the Design Star Consortium for research in design

Please note that these studentships are shared across a consortium of universities, of which Goldsmiths is a part. Studentships generally cover tuition fees, an annual maintenance grant (sometimes called a 'stipend'), and research training.

Funding from the UK government

A Postgraduate Loan can help with course fees and living costs while you study a Masters degree. The loans, which are up to £10,609 per student, are:

- A contribution towards the cost of study
- Non-means tested
- Paid directly to the student into a UK bank account

You may be eligible for a loan if you're a UK or EU national*. Eligibility will depend on the course you're studying, your age, and your nationality or residency status. Please visit gov.uk/postgraduate-loan for full eligibility details.

*If you are an EU national this may be subject to change in 2019. Please visit gold.ac.uk/eu for the most up-to-date information.

External sources of funding

Charities, trusts and professional bodies sometimes offer funding that you can apply for before and during your studies. Search online or use websites like scholarship-search.org.uk and thescholarshipclub.org.uk for details.

International students

Country-specific funding

Your home country may offer scholarships or special funding opportunities. Popular opportunities include Chevening, Commonwealth Scholarship Commission (CSC), and Fulbright Commission scholarships. Visit gold.ac.uk/international/regions or contact your Ministry of Education or local British Council office, British High Commission or Embassy for information about sources of funding.

Federal loans for North American students

For eligible students from the US, we are approved by the US Department of Education to offer federal loans. If you wish to be considered, you should complete the Free Application for Federal Student Aid (FAFSA) and list Goldsmiths as a college to receive the results of your FAFSA. Our Federal School Code is G11765. You can find out more on our website.

Canadian students are also able to use their government loans. Goldsmiths is registered to certify national and provincial loans and grants.

Working during your studies

You may wish to find part-time work during your studies. If you have a Tier 4 student visa (see page 122), you will only usually be able to work for up to 20 hours during the week (if you are a degree level student or above), or 10 hours per week (if you are studying below degree level) during term time. You can find out more on the Immigration Advisory Service web pages at gold.ac.uk/immigration

If you want to know more about working during your studies, the IAS offers a series of dedicated visa drop-in sessions during the year. You can check the dates at gold.ac.uk/immigration/contact

Living costs

The cost of living and studying in London can be higher than some parts of the UK, although Goldsmiths' location in South-East London means that the cost is lower than in central London. If you're an international student, we encourage you to have at least £300 in British currency on your arrival in the UK for your immediate needs until you set up a UK bank account. You can use international.studentcalculator.org to budget your studies.

Find out more

gold.ac.uk/pg/fees-funding

Visas and immigration

If you are coming to the UK for more than six months and are from outside the European Economic Area you probably need a visa to study with us.

Tier 4 (General) visa

This is the most common type of student visa, and is usually for those studying full-time with Goldsmiths. If you require a Tier 4 student visa you will need to demonstrate to UK Visas and Immigration (UKVI) that you can cover your living costs in addition to your tuition fees when you make your visa application. For most students applying for a visa to study with us in 2018 this was £11,385 plus tuition fees (please note that you'll need to account for extra if you are bringing family members with you).

Guidance and support

The Immigration Advisory Service (IAS) at Goldsmiths provides visa advice and guidance to all international students - from before you arrive, through to when you graduate. This includes help with making a student visa application overseas, travelling around Europe during vacations, and applying for work visas after your studies. You'll find lots of useful information at gold.ac.uk/immigration and you can also contact the IAS at any point by email for help and guidance: immigration@gold.ac.uk

Supporting you through the application process

If you're applying from overseas

We will write to you at each step of the application process with important visa information, and will support you through the process. You can also take part in dedicated web chats to ask us about the visa application process.

If you're applying from inside the UK

The IAS will help you make your application. Check gold.ac.uk/immigration/contact for ways to get in touch.

The IAS will contact all international students about the visa process throughout the summer before your programme starts.

Further information

If you have already applied to Goldsmiths and have a question, you can contact our International team by emailing international@gold.ac.uk or calling +44 (0)20 7078 5300.

Please note: the rules about student visas change regularly. You should check with the IAS if you are unsure about something. The visa and immigration advice on this page is correct at the time of printing, but the latest information will always be available on our website.

Find out more

gold.ac.uk/immigration

Index of programmes

Taught programmes

Anthropology & Cultural Politics MA 65
Anthropology & Museum Practice MA 65
Applied Anthropology & Community & Youth Work MA 71
Applied Anthropology & Community Arts MA 71
Applied Anthropology & Community Development MA 71
Applied Theatre: Drama in Educational, Community & Social Contexts MA 103
Art & Politics MA 95
Art Psychotherapy MA 105
Artists' Film & Moving Image MA 67
Arts Administration & Cultural Policy MA 69
Arts Administration & Cultural Policy: Music Pathway MA 93
Arts & Learning MA 81
Black British Writing MA 103
Brands, Communication & Culture MA 91
Children's Literature: Children's Illustration MA 91
Cities & Society MA 101
Coaching PGCert 89
Cognitive Behavioural Therapy (CBT) MSc/PGDip 105
Cognitive & Clinical Neuroscience MSc 97
Composition MMus 93
Computational Arts MA/MFA 73
Computational Cognitive Neuroscience MSc 73
Computer Games Art & Design MA 73
Consumer Behaviour MSc 89
Contemporary Art History Graduate Diploma 107
Contemporary Art Theory MA 107
Counselling MA 105
Creative & Cultural Entrepreneurship MA 75
Creative & Life Writing MA 83
Creative Practice MMus 93
Creative Writing & Education MA 81
Critical & Creative Analysis MA 101
Cultural Policy, Relations & Diplomacy MA 69
Cultural Studies MA 91
Culture Industry MA 91
Curating MFA 77

Dance Movement Psychotherapy MA 105
Data Science MSc 73
Design: Expanded Practice MA 79
Digital Journalism MA/MSc 87
Digital Media: Technology & Cultural Form MA 91
Dramaturgy & Writing for Performance MA 103
Education: Culture, Language & Identity MA 81
Events & Experience Management MA 75
Film & Screen Studies MA 91
Filmmaking (with pathways in: Cinematography; Directing Fiction; Editing; Producing; Screen Documentary; Sound Recording, Post-Production & Design) MA 91
Forensic Psychology MSc 97
Fine Art MFA 67
Foundations in Clinical Psychology & Health Services MSc 97
Gender, Media & Culture MA 101
Global Media & Transnational Communications MA 91
History MA 85
Human Rights, Culture & Social Justice MA 101
Humanistic & Psychodynamic Counselling Certificate 105
Independent Games & Playable Experience Design MA 73
International Relations MA 95
Journalism MA 87
Literary Studies (with pathways in: American Literature & Culture; Comparative Literature & Criticism; Critical Theory; Literature of the Caribbean & its Diasporas; Modern Literature; Romantic & Victorian Literature & Culture; Shakespeare: Early & Modern) MA 83
Luxury Brand Management MA 75
Management of Innovation MSc 89
Marketing & Technology MSc 89
Media & Communications MA 91
Migration & Mobility MA 65
Multilingualism, Linguistics & Education MA 81
Museums & Galleries Entrepreneurship PGCert 75
Music (Contemporary Music Studies; Ethnomusicology; Musicology; Popular Music Research; General) MA 93
Music, Mind & Brain MSc 97
Musical Theatre MA 103
Occupational Psychology MSc 89
Performance & Culture: Interdisciplinary Perspectives MA 103
Performance & Related Studies MMus 93
Performance Making MA 103
Photography: The Image & Electronic Arts MA 91
Photography & Urban Cultures MA 101
Political Communications MA 91

Politics, Development & the Global South MA 95
 Popular Music MMus 93
 Postcolonial Culture & Global Policy MA 91
 Professional Leadership for Social Work MA/
 PGDip/PGCert 99
 Promotional Media: Public Relations, Advertising
 & Marketing MA 91
 Psychology of the Arts, Neuroaesthetics
 & Creativity MSc 97
 Psychology of Social Relations MSc 97
 Queer History MA 85
 Race, Media & Social Justice MA 101
 Radio MA 87
 Research Architecture MA 107
 Script Writing MA 91
 Social Anthropology MA 65
 Social Entrepreneurship MA 75
 Social Research MSc 101
 Social Work MA 99
 Social Work CPD (Continuing Professional
 Development) modules MA-level 99
 Sociocultural Linguistics MA 83
 Sonic Arts MMus 93
 Television Journalism MA 87
 Tourism & Cultural Policy MA 69
 Translation MA 83
 Understanding Domestic Violence
 & Sexual Abuse MA 105
 Understanding Domestic Violence & Sexual
 Abuse Distance Learning MA 105
 User Experience Engineering MSc 73
 Virtual & Augmented Reality (3D Graphics
 & User Experience Pathway) MA 73
 Virtual & Augmented Reality (Programming
 & Computer Science Pathway) MSc 73
 Visual Anthropology MA 65
 Visual Sociology MA 101
 World Theatres MA 103

PGCE programmes

Primary PGCE 81
 Secondary Standard Programme PGCE:
 Art & Design; Biology; Chemistry; Design &
 Technology; Drama; English; Mathematics;
 Media Studies with English; Modern
 Languages; Physics 81
 Secondary Part-Time Programme PGCE:
 Biology; Chemistry; Design & Technology;
 English; Physics 81

Research programmes

MRes

Anthropology 65
 Curatorial/Knowledge 107
 English 83
 Filmmaking, Photography & Electronic Arts 91
 History 85
 Media & Communications 91
 Research Methods in Psychology 97
 Visual Anthropology 65
 Visual Cultures 107

MPhil & PhD

Anthropology 65
 Art 67
 Art Practice & Learning 81
 Art Psychotherapy 105
 Arts & Computational Technology 73
 Community & Youth Work 71
 Computer Science 73
 Counselling & Psychotherapy 105
 Creative Writing 83
 Cultural Studies 91
 Curating 77
 Curatorial/Knowledge 107
 Design 79
 Drama 103
 Education 81
 English, Comparative Literature or Linguistics 83
 History 85
 Institute for Creative & Cultural
 Entrepreneurship 69

Management 89
 Media & Communications 91
 Music (Research; Composition; Performance
 Practice; Sonic Arts) 93
 Politics 95
 Psychology 97
 Psychology (IMS) 89
 Religious Studies 71
 Research Architecture 107
 Social Work 99
 Sociology 101
 Visual Anthropology 65
 Visual Culture 107
 Visual Sociology 101

Please note: most of our departments offer
 research opportunities, so if your area of interest
 isn't listed above feel free to get in touch with
 a suitable member of staff directly.

Original design by
Baxter and Bailey.

Thank you to the artists,
photographers and
designers whose work is
shown, including BA Design
student Annie Kruntcheva
(anniekruntcheva.com).

Images in this publication of
current students and alumni
have been taken with their
permission. If you have any
concerns about an image in
this publication, their use,
and your rights, please email
communications@gold.ac.uk

Katy B, page 7, © Dreamstime;
teddy bear and United Nations
HQ New York City, page 27,
by Boudewijn Huysmans
and Daryan Shamkhali on
Unsplash; exhibition image,
page 29, by Kris Lemsalu,
'3 of Life', 2017 (courtesy of
the artist and Tatjana Pieters
Gallery); central image, pages
106-107, by Maggie Roberts
(Fragile States 2018)

Please note that some of
the department facilities
listed may be subject to
booking, availability or
taking certain modules.

The campus boundary on the
front cover map is approximate.

Equality & Diversity

Goldsmiths is passionate about advancing
equality and celebrating diversity. You can
find out more at gold.ac.uk/equality-diversity

Disclaimer

We have made every effort to ensure the
content of this publication is up-to-date as
of July 2018. If you receive an offer to
study with us, you will be sent a set of terms
and conditions governing our relationship
with you. This includes things like what
happens if the information we've already
provided to you changes. Goldsmiths does
not accept liability for the accuracy or
reliability of any information contained
within third party publications/websites
referred to or signposted to in this publication.

You can read our most up-to-date disclaimer
at gold.ac.uk/disclaimer

© Goldsmiths, University of London 2018

The copyright in these pages belongs to
Goldsmiths, University of London, and all
rights are reserved.

Goldsmiths, University of London
New Cross
London SE14 6NW
United Kingdom

Term dates

For 2019 entry, our term dates are:

Autumn: 23 September 2019 to 13 December 2019

Spring: 13 January 2020 to 27 March 2020

Summer: 27 April 2020 to 25 September 2020

Please note that PGCE students have slightly
different term dates. You'll find these on
our website.

Find our latest term dates at
gold.ac.uk/term-dates

